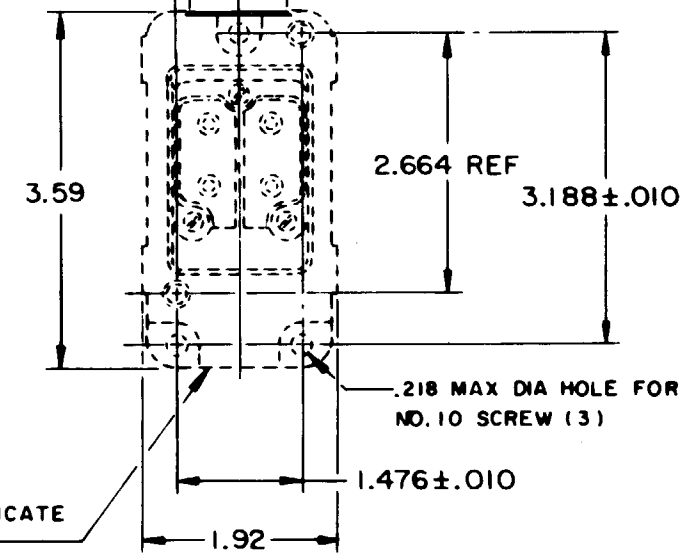
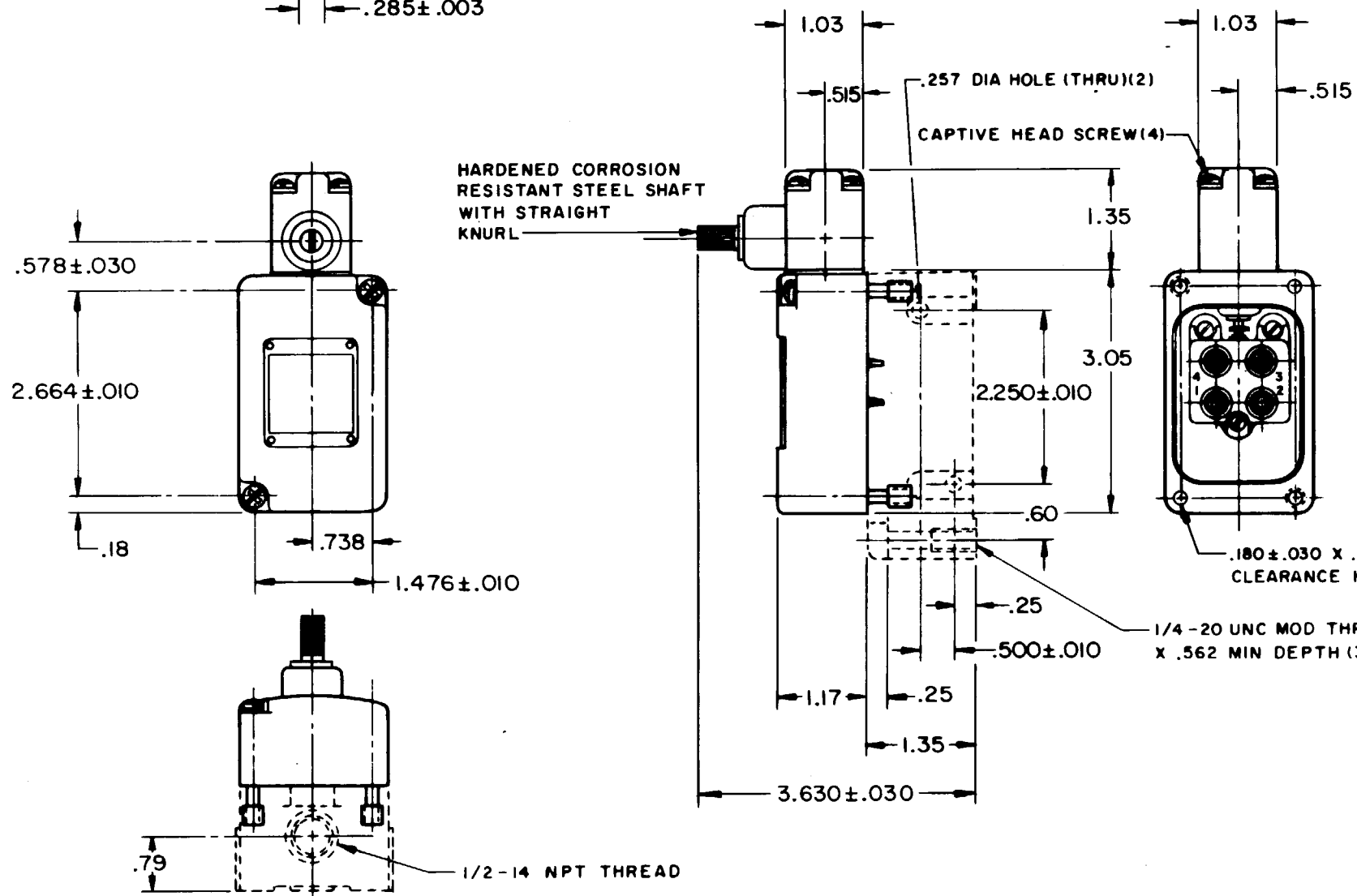
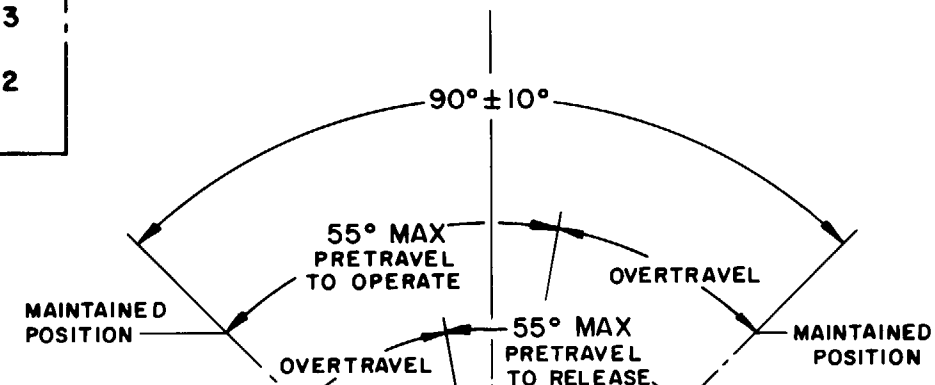
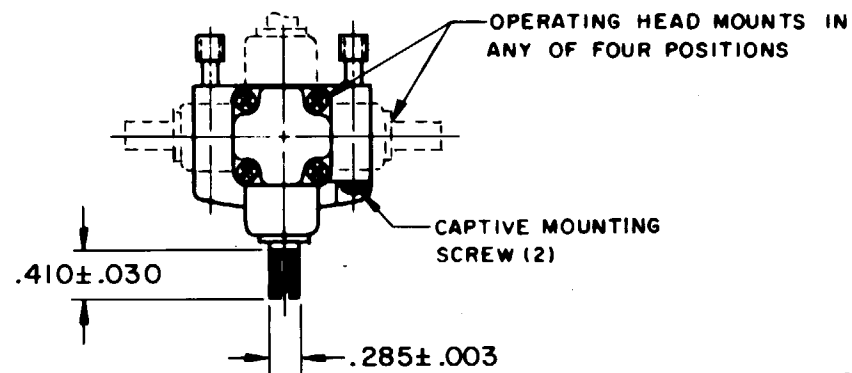
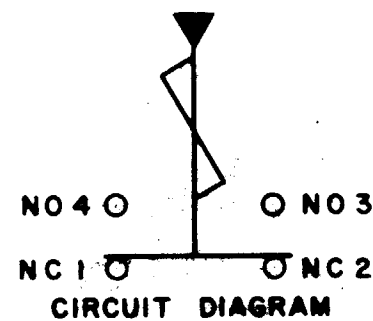


SWITCH - ENCLOSED

CATALOG LISTING
206LS2



THIS DRAWING COVERS A PROPRIETARY ITEM AND IS THE PROPERTY OF MICRO SWITCH, A DIVISION OF MINNEAPOLIS-HONEYWELL REGULATOR CO. THIS DRAWING IS NOT TO BE COPIED OR USED WITHOUT THE APPROVAL OF MICRO SWITCH.

CHARACTERISTICS	ELECTRICAL DATA	SCALE 1/2 TO 1
OPERATING TORQUE - - - - - 3 IN LB MAX	CONTACT ARRANGEMENT (SEE CIRCUIT DIAGRAM)	DO NOT SCALE PRINT
	10A-120, 240, OR 480 VAC, 1/3 HP - 120 VAC 3/4 HP - 240 VAC; 0.8A - 115 VDC; 0.4A - 230 VDC .1A - 550 VDC PILOT DUTY: 600 VAC MAX	UNLESS OTHERWISE NOTED DIMENSIONS ARE IN INCHES TOLERANCES ARE: ONE PLACE (.0) ± .030 TWO PLACE (.00) ± .015 THREE PLACE (.000) ± .005 ANGLES ±
SWITCH - BASIC REPLACEMENT - - - - - 2MN6		WEIGHT

206LS2
 M
 DRAWING NUMBER
 28
 ISSUE
 X5
 REVISIONS
 A CO15200
 OMW
 24 JUN 65
 B SR 12665
 W E
 3 JAN 67
 C CO25152
 M
 24 APR 69
 D CO-77031
 J B B
 22 DEC 93
 CHECK WRA
 CHECK WRA
 CHECK LSD
 DRAWN
 OMW 24 JUN 65
 FO-50378-003