

# MICRO SWITCH

FREEPORT, ILLINOIS, U.S.A.  
A DIVISION OF HONEYWELL  
FED. MFG. CODE 91929

## SWITCH-TOGGLE

CATALOG LISTING  
**2TL47 SERIES**

CHART 1

CATALOG LISTING

KEYWAY SIDE (1-2,4-5)	CIRCUIT MADE WITH TOGGLE LEVER IN	
	CENTER (1-2,4-5)	OPPOSITE KEYWAY (2-3,5-6)

MILITARY RATING (AMPS)

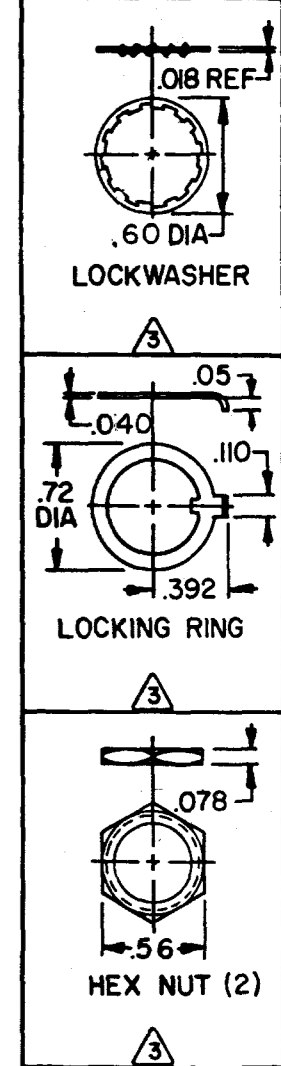
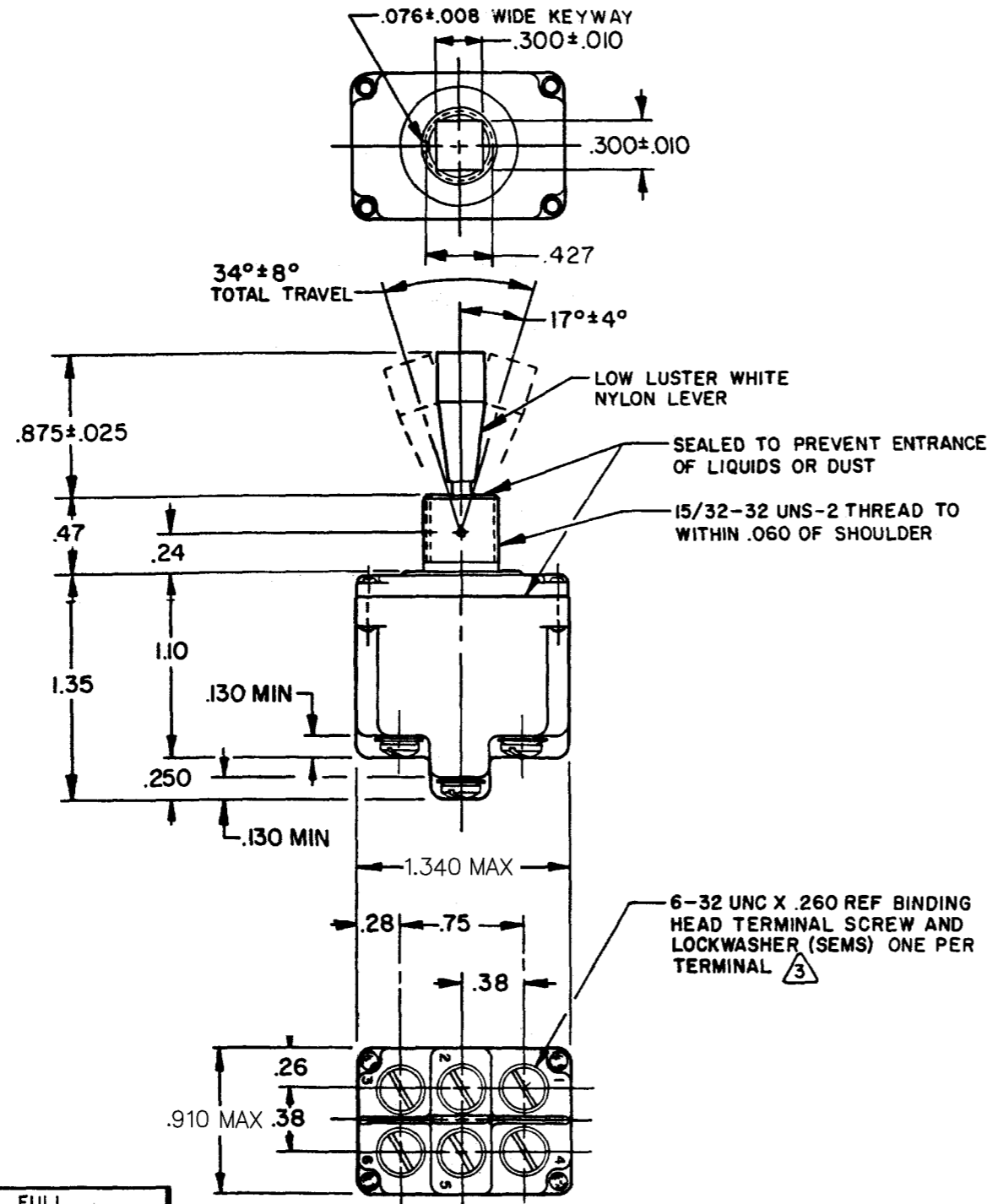
RESISTIVE LOAD DC VOLTS			LOAD AC VOLTS		LAMP LOAD		INDUCTIVE LOAD	
28	125	250	125	250	28 VDC	125 VAC	28 VDC	125 VAC

THIS DRAWING COVERS A PROPRIETARY ITEM AND IS THE PROPERTY OF MICRO SWITCH, A DIVISION OF HONEYWELL. THIS DRAWING IS NOT TO BE COPIED OR USED WITHOUT THE APPROVAL OF MICRO SWITCH.

2TL47-1	ON	OFF	ON
2TL47-2	OFF	NONE	ON
2TL47-3	ON	NONE	ON
2TL47-21	NONE	OFF	ON
2TL47-31	NONE	ON	ON
2TL47-4	MOM OFF	NONE	ON
2TL47-5	MOM ON	OFF	ON
2TL47-6	MOM ON	NONE	OFF
2TL47-7	MOM ON	OFF	MOM ON
2TL47-8	MOM ON	NONE	ON
2TL47-51	NONE	ON	MOM ON
2TL47-61	MOM ON	OFF	NONE

20 .75 .5 15 6 7 4 15 15  
(REFER TO L191 FOR UL RATING)

18 .75 .5 11 6 5 2 10 8  
(REFER TO L192 FOR UL RATING)



### NOTES

- SWITCHES ARE CAPABLE OF WITHSTANDING A TEMPERATURE OF 160°F CONTINUOUSLY AT FULL RATED LOAD
- CIRCUIT DESIGNATION AND MICRO SWITCH CATALOG LISTING MARKED ON SIDE OF SWITCH
- FURNISHED UNASSEMBLED
- FOR TERMINAL COVER SEE MICRO SWITCH CAT. LIST. 5P'A8
- APPLIES ONLY TO "ON" AND "MOMENTARY ON" POSITIONS

CATALOG LISTING 2TL47 SERIES CHART 1  
 ISSUE 4  
 REVISIONS:  
 A CO 78047 06 FEB 04  
 B CO 094438 06 FEB 04  
 C 0003037 06 FEB 04  
 TSG 06 FEB 04  
 DRAWN TSM 9 JUN 94  
 CHECK KAG 7 JUL 94  
 CHECK MDM 06 FEB 04  
 CHECK KAG 7 JUL 94  
 CHECK MDM 06 FEB 04  
 REPLACES RELEASE NO. CO-78497  
 2TL47 SERIES  
 FORMTEK

SCALE FULL  
DO NOT SCALE PRINT  
UNLESS OTHERWISE NOTED  
DIMENSIONS ARE IN INCHES  
TOLERANCES ARE:  
 ONE PLACE (.0) ±.030  
 TWO PLACE (.00) ±.015  
 THREE PLACE (.000) ±.005  
 ANGLES H H H H  
 WEIGHT .12 LBS APPROX

CODE L191 15A-125, 250, 277 VAC  
 1/2 HP-125 VAC, 1 HP-250, 277 VAC  
 5A-125 VAC "L"

CODE L192 10A-125, 250, 277 VAC  
 1/4 HP-125 VAC, 1/2 HP-250, 277 VAC  
 3A-125 VAC "L"