

MICRO SWITCH

FREERPORT ILLINOIS, U.S.A
A DIVISION OF HONEYWELL

FED. CODE. CODE 91929

SWITCH - BASIC

CATALOG LISTING

311SM703-T

DRAWING NUMBER
311SM703-T

PAGE 1 OF 1

REPLACES

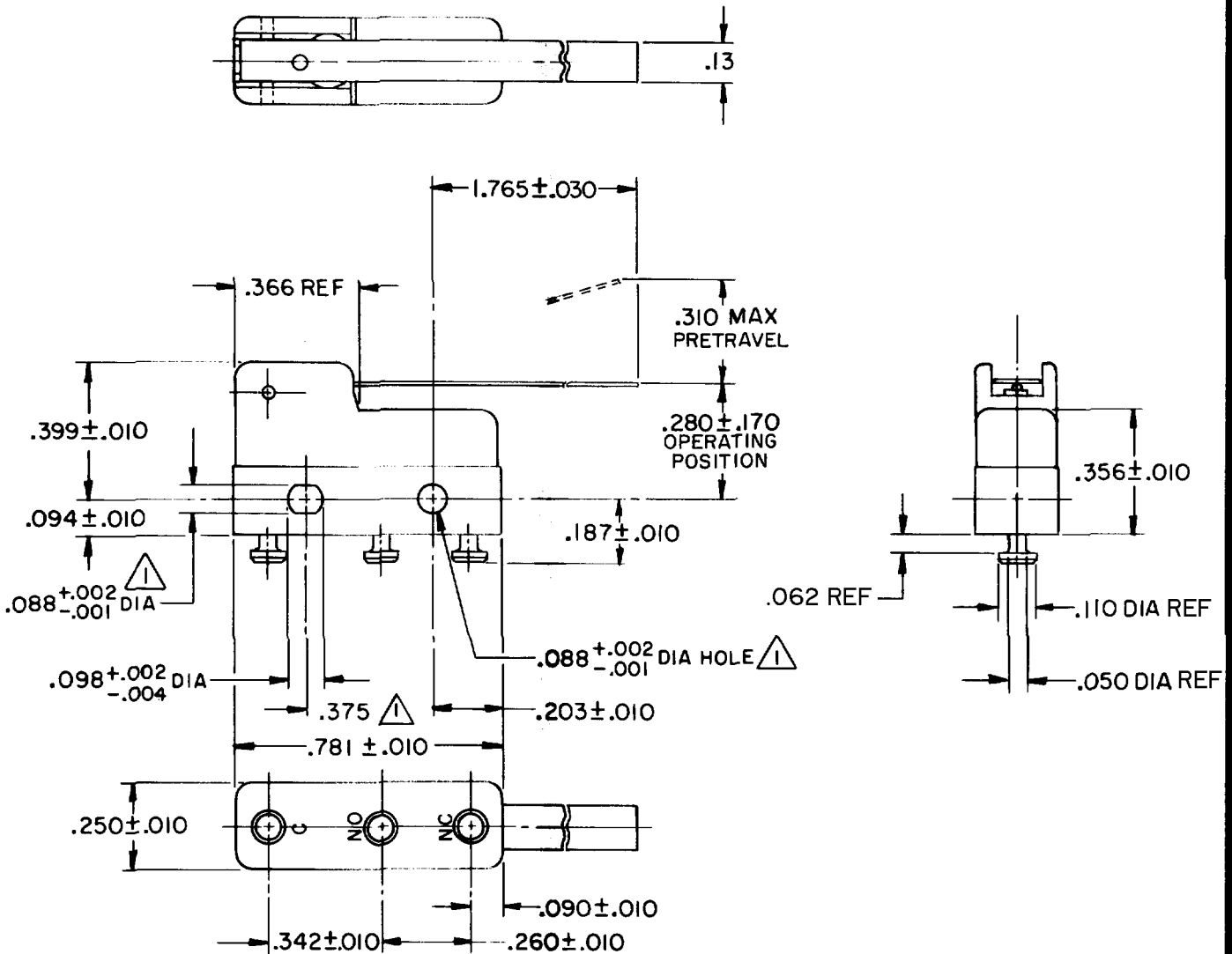
RELEASE NO. PR-275

ISSUE
M

6

REVISIONS

A	C031079	RE R	27 NOV 72
B	CO-95172	J J A	21 JUNE 99
C	C095591	DLT	28 OCT 99



NOTES

- 1- MOUNTING HOLES WILL ACCEPT PINS OR SCREWS OF .087 MAX DIA ON .375 ± .002 CENTERS
- 2- SWITCH WILL WITHSTAND TEMPERATURE OF 250°F
- 3- TERMINALS ARE PLATED FOR SOLDERING

THIS DRAWING COVERS A PROPRIETARY ITEM AND IS THE PROPERTY OF MICRO SWITCH, A DIVISION OF HONEYWELL. THIS DRAWING IS NOT TO BE COPIED OR USED WITHOUT THE APPROVAL OF MICRO SWITCH.

CHARACTERISTICS

OPERATING FORCE - - - - - 6 GRAM MAX
RELEASE FORCE - - - - - 1 GRAM MIN
DIFFERENTIAL TRAVEL - - - - .070 MAX
OVERTRAVEL - - - - - .057 MIN

ELECTRICAL DATA

CONTACT ARRANGEMENT
S P D T

30 VOLTS DC RATING

INDUCTIVE - - - - SEA LEVEL - 3 AMP
50,000 FT - - - 2.5 AMP

RESISTIVE - - - - SEA LEVEL - 5 AMP
50,000 FT - - - 5 AMP

MAXIMUM INRUSH - - - - -24 AMP

L119

4A 250 VAC



SCALE 2 TO 1

DO NOT SCALE PRINT

UNLESS OTHERWISE NOTED
DIMENSIONS ARE IN INCHES
TOLERANCES ARE

ONE PLACE (.0) ± .030
TWO PLACE (.00) ± .015
THREE PLACE (.000) ± .005
ANGLES ±

WEIGHT .006 LB MAX

FORMTEK

FO-52848

DRAWN

RE R 27 NOV 72 CHECK LSD 11 Dec 72 CHECK PRW 11 Dec 72 CHECK