

# MICRO SWITCH

A DIVISION OF HONEYWELL-ROCKWELL REGULATORS COMPANY  
 FEDERAL MFR. CODE 91929

## SWITCH - BASIC

CATALOG LISTING  
**BA-2R-P1**

(M) BA-2R-P1  
 ISSUE 1

BA-2R-P1

CATALOG LISTING

PAGE 1 OF 1

ISSUE **M**  
**8**

REPLACES

RELEASE NO.

CNT 29 JUN 77

CHECK

26 JUN 83

CHECK

27 MAR 73

CHECK

20 OCT 93

CHECK

10 JUN 94

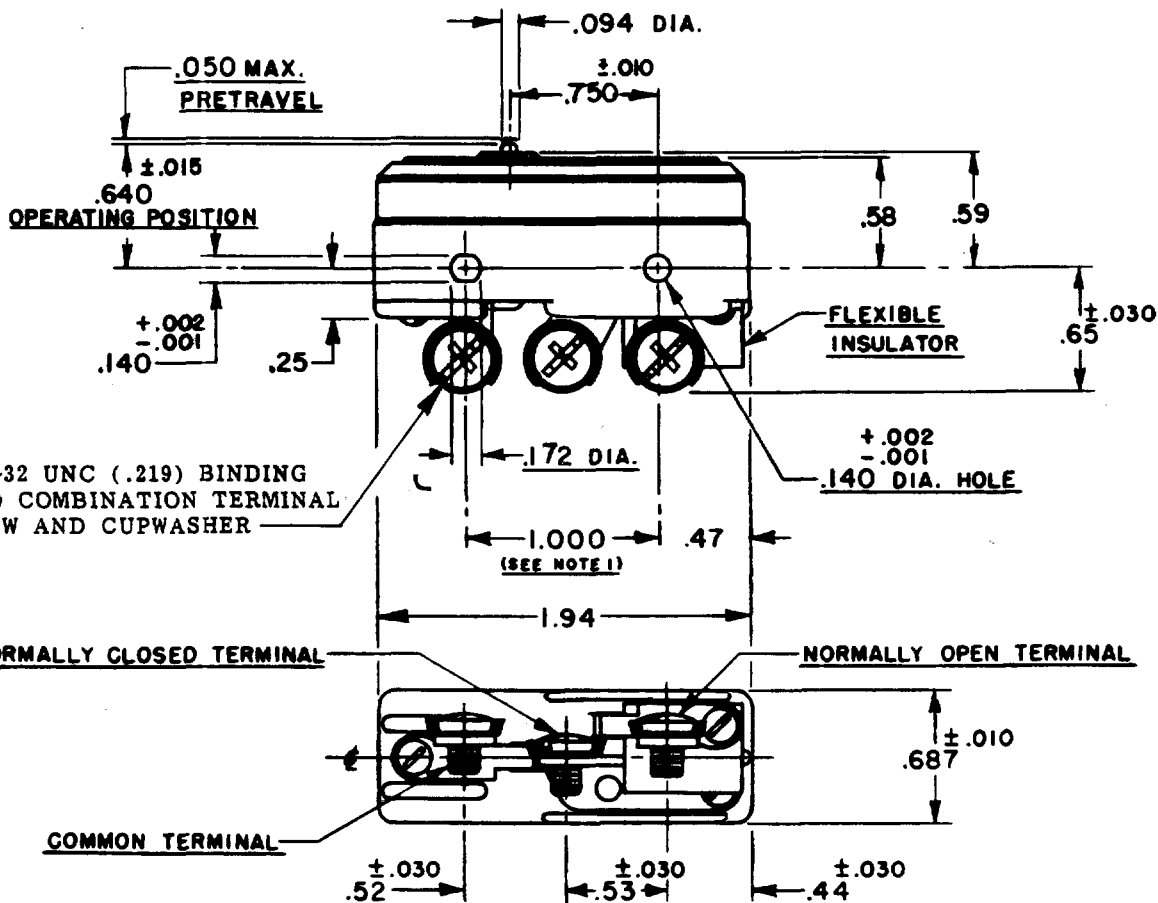
CHECK

10 JUNE 99

**REVISIONS**

A	CO 9519	C.M.A.	10 JUN 85
B	CO 3063	S.R.H.	27 MAR 73
C	CO 7327-G	J.A.I.	20 OCT 93
D	CO 77590	SAD	10 JUN 94
E	CO 92984	J.A.S.	27 MAY 98
F	CO 93346		
		DLT	23 SEP 98
G	CO 94212-C		20 SEP 99

FORMTEK  
 DRAWN



**NOTE**  
 1-MOUNTING HOLES WILL ACCEPT PINS OR SCREWS  
 OF .139 MAX. DIA. ON 1.000 ± .002 CENTERS

THIS DRAWING COVERS A PROPRIETARY ITEM AND IS THE PROPERTY OF MICRO SWITCH, A DIVISION OF HONEYWELL. THIS DRAWING IS NOT TO BE COPIED OR USED WITHOUT THE APPROVAL OF MICRO SWITCH.

**CHARACTERISTICS**

OPERATING FORCE ----- 14 - 22 OZ.  
 RELEASE FORCE ----- 10 OZ. MIN.  
 DIFFERENTIAL TRAVEL ---- .002 - .0075  
 OVERTRAVEL ----- .010 MIN.

**ELECTRICAL DATA**

CONTACT ARRANGEMENT  
 S. P. D. T.

UNDERWRITERS' LAB. INC. LISTED RATING  
 20A - 125, 250, OR 400 VAC; 15A - 125 VAC "L"  
 1HP - 125 VAC; 2HP - 250 VAC  
 1/2A - 125 VDC; 1/4A - 250 VDC  
 2A - 600 VAC

- L145-  
 - L288-  
 - L299-  
 - L308-



20(3)A 250V ~ T85 5E4

**SCALE FULL**

DO NOT SCALE PRINT

UNLESS OTHERWISE SPECIFIED  
 DIMENSIONS ARE IN INCHES  
**TOLERANCES ARE:**

ONE PLACE (.0) ±.030  
 TWO PLACE (.00) ±.015  
 THREE PLACE (.000) ±.005  
 ANGLES ±

WEIGHT .075 LB.