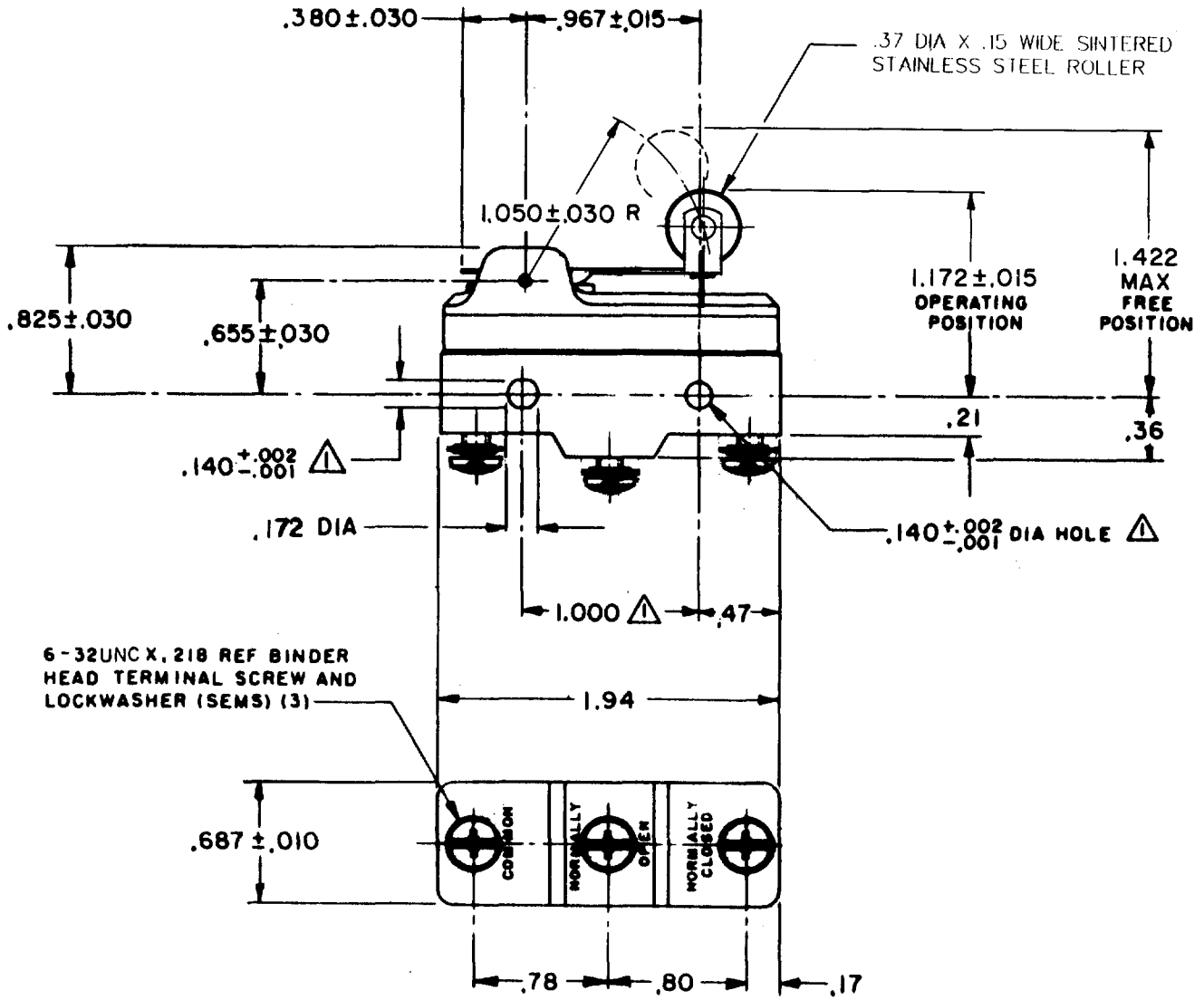


SWITCH - BASIC

BA-2RV22T
 PAGE 1 OF 1
 M
 DRAWING NUMBER
 9
 ISSUE
 BA-2RV22T
 ISSUE 1
 REPLACES
 RELEASE NO.
 CHECK
 REVISIONS
 A CO 15663
 GCH 28 DEC 61
 B CO34312
 DBW 25 APR 78
 C CO-89351-D
 JWB 18 JUL 91
 D CO-70184-G
 GJW 7 MAR 92
 E CO-177387
 JJC 1 MAY 92
 F CO-75204B
 DAW 1 FEB 94
 G CO-77590
 SAD 9 JUN 94
 H CO93346
 DLT 26 AUG 98
 CHECK DAW
 GCH 28 DEC 61
 DRAWN
 FORMTEK
 FO-50378



6-32UNC X .218 REF BINDER
 HEAD TERMINAL SCREW AND
 LOCKWASHER (SEMS) (3)

NOTE
 ▲ - MOUNTING HOLES WILL ACCEPT PINS OR SCREWS
 OF .139 MAX DIA ON 1.000 ± .002 CENTERS

THIS DRAWING COVERS A PROPRIETARY ITEM AND IS THE PROPERTY OF MICRO SWITCH, A DIVISION OF MINNEAPOLIS-HONEYWELL REGULATOR CO. THIS DRAWING IS NOT TO BE COPIED OR USED WITHOUT THE APPROVAL OF MICRO SWITCH.

CHARACTERISTICS		ELECTRICAL DATA		SCALE----- FULL
OPERATING FORCE -----	6 OZ MAX	CONTACT ARRANGEMENT	S P O T	DO NOT SCALE PRINT
RELEASE FORCE -----	1 1/2 OZ MIN	L23 UNDERWRITERS' LAB. INC. LISTED RATING 20A - 125, 250 OR 480 VAC 10A - 125 VAC "L" 1HP - 125 VAC, 2HP - 250 VAC 1/2A - 125 VDC, 1/4A - 250 VDC		UNLESS OTHERWISE SPECIFIED
PRETRAVEL -----	.250 MAX			DIMENSIONS ARE IN INCHES
DIFFERENTIAL TRAVEL -----	.045 MAX			TOLERANCES ARE:
OVERTRAVEL -----	.030 MIN			ONE PLACE (.0) ±.030 TWO PLACE (.00) ±.015 THREE PLACE (.000) ±.008 ANGLES ±
		L288		WEIGHT
		L299		
		L308	20(3)A 250V ~ T85 5E4	