

MICRO SWITCH

A DIVISION OF MINNEAPOLIS-HONEYWELL REGULATOR COMPANY
 MINNEAPOLIS, MINNESOTA

FED. MFR. CODE 91929

SWITCH - BASIC

CATALOG LISTING

BZ-RW822-A2

DRAWING NUMBER
BZ-RW822-A2

PAGE 1 OF 1

M

ISSUE
 10

REPLACES

RELEASE NO.

CHECK

CHECK

17 APR 62

DAW

CHECK

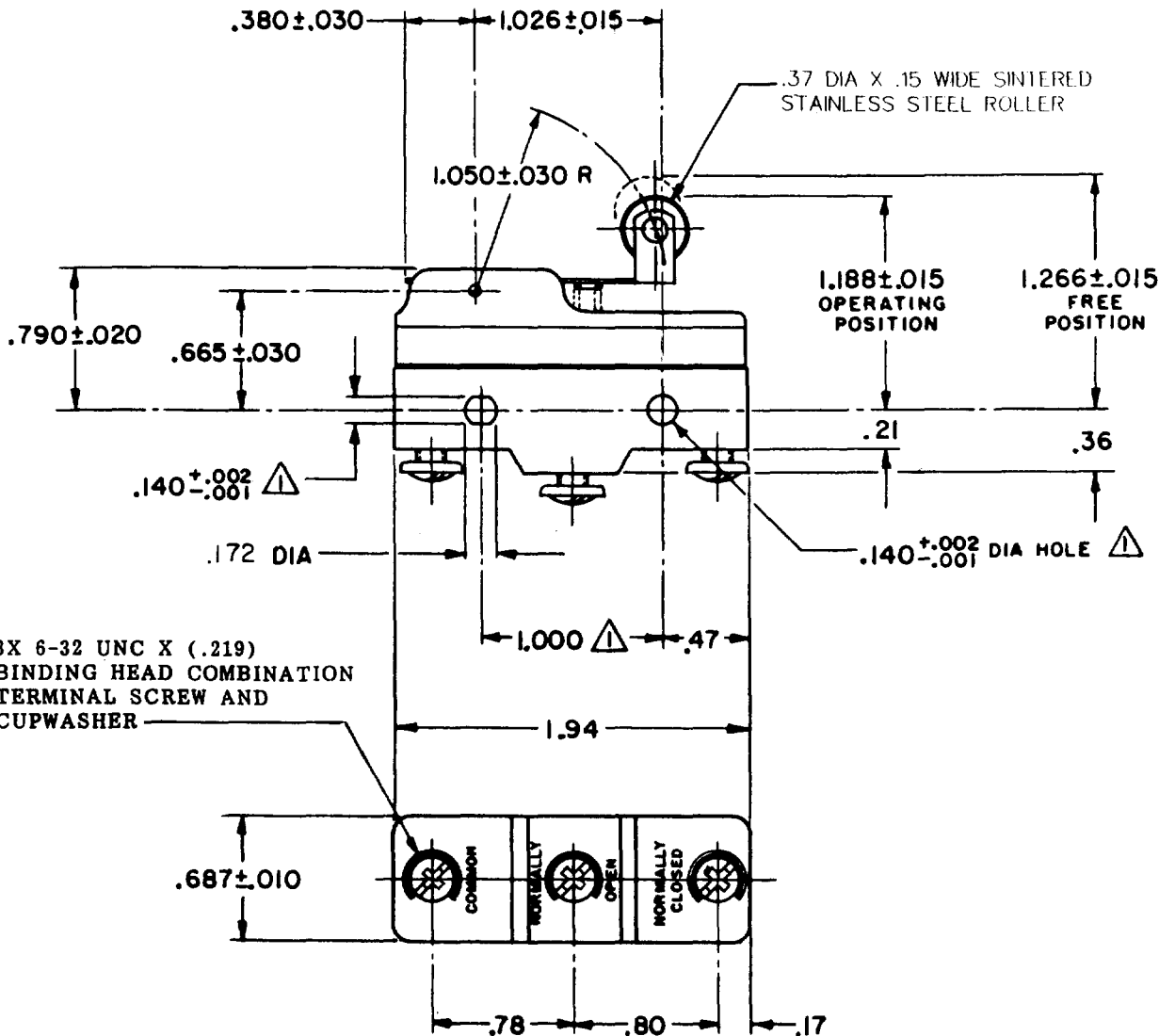
6 APRIL 62

G C H

REVISIONS

A	CO 16736	B C H 6 APRIL 62
B	CO23645	M B F 23 JAN 69
C	CO 70184-M	G R T 2 JUN 92
D	CO 73287-J	J A L 22 NOV 93
E	CO- 75204R	DAW 1 FEB 94
F	CO- 77589	J A L 30 MAR 94
G	CO93986	J J A 3 MAR 99

FORMTEK



NOTE -
 ▲ MOUNTING HOLES WILL ACCEPT PINS OR SCREWS OF .139 MAX DIA ON 1.000 ± .002 CENTERS

THIS DRAWING COVERS A PROPRIETARY ITEM AND IS THE PROPERTY OF MICRO SWITCH, A DIVISION OF MINNEAPOLIS-HONEYWELL REGULATOR CO. THIS DRAWING IS NOT TO BE COPIED OR USED WITHOUT THE APPROVAL OF MICRO SWITCH.

CHARACTERISTICS

OPERATING FORCE ----- 5 1/2 OZ MAX
 RELEASE FORCE ----- 1 1/2 OZ MIN
 DIFFERENTIAL TRAVEL ----- .001-.006
 OVERTRAVEL ----- .094 MIN

ELECTRICAL DATA

CONTACT ARRANGEMENT
 S P D T
 L103
 15A 125, 250 OR 480 VAC
 1/8HP 125 VAC, 1/4HP 250 VAC
 FIG. 288
 FIG. 299
 FIG. 306
 16A 250V ~ T85 5E4

SCALE FULL

DO NOT SCALE PRINT

UNLESS OTHERWISE SPECIFIED
 DIMENSIONS ARE IN INCHES
TOLERANCES ARE:
 ONE PLACE (.0) ±.030
 TWO PLACE (.00) ±.018
 THREE PLACE (.000) ±.008
 ANGLES ±

WEIGHT .076 LB

