



MICRO SWITCH

FREEPORT, ILLINOIS, U.S.A
A DIVISION OF HONEYWELL

FED. MFG. CODE 91929

SWITCH - BASIC

CATALOG LISTING

BZ-2RW8222-A2

BZ-2RW8222-A2

PAGE 1 OF 1

M

DRAWING NUMBER

9

ISSUE

REPLACES

RELEASE NO. PR-1488

CHECK

REVISIONS

A	CORR	R J W	24 JULY 64
B	PR-1488	R E R	1 OCT 70
C	CO-73287-J	J A L	22 NOV 93
D	CO-75204B	J W B	1 FEB 94
E	CO-77589	T S M	29 MAR 94
F	CO-82922	L J R	26 MAR 96
G	CO93346	D L T	11 SEP 98

CHECK

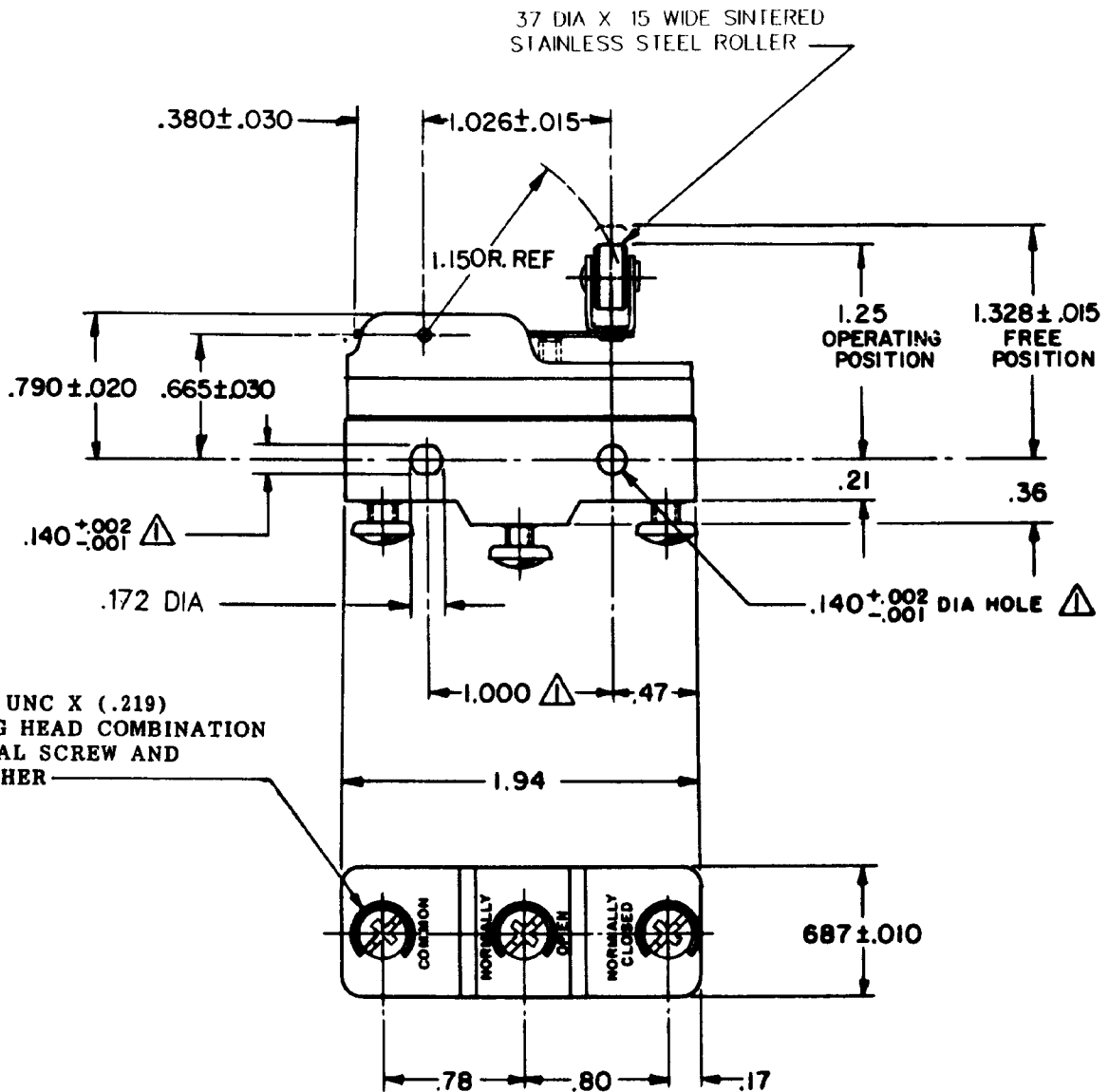
27 JULY 64

DRAW

CHECK

24 JULY 64

RJW



3X 6-32 UNC X (.219)
BINDING HEAD COMBINATION
TERMINAL SCREW AND
CUPWASHER

NOTE

▲ MOUNTING HOLES WILL ACCEPT PINS OR SCREWS
OF .139 MAX DIA ON 1.000±.002 CENTERS

THIS DRAWING COVERS A PROPRIETARY ITEM AND IS THE PROPERTY OF MICRO SWITCH, A DIVISION OF HONEYWELL THIS DRAWING IS NOT TO BE COPIED OR USED WITHOUT THE APPROVAL OF MICRO SWITCH.

CHARACTERISTICS

OPERATING FORCE --- 2 1/2 - 6 1/2 OZ

RELEASE FORCE ----- 1 1/4 OZ MIN

DIFFERENTIAL TRAVEL ---- .003 - .020

DO NOT OVERTRAVEL MORE THAN ---- .141

ELECTRICAL DATA

CONTACT ARRANGEMENT
6 P D T

UNDERWRITERS' LAB. INC. LISTED RATINGS

-L96- 15A-125, 250, OR 480 VAC
1/2 A-125 VDC; 1/4 A-250 VDC
1/8 HP-125 VAC; 1/4 HP-250 VAC

-L288-
-L299-
-L306-

CE D SF

16A 250V ~ T85 5E4

SCALE FULL

DO NOT SCALE PRINT

UNLESS OTHERWISE NOTED
DIMENSIONS ARE IN INCHES

TOLERANCES ARE:

ONE PLACE (.0) ±.030
TWO PLACE (.00) ±.015
THREE PLACE (.000) ±.005
ANGLES ±

WEIGHT .060 LB

FORMTEK

FO-90378

DRAWN