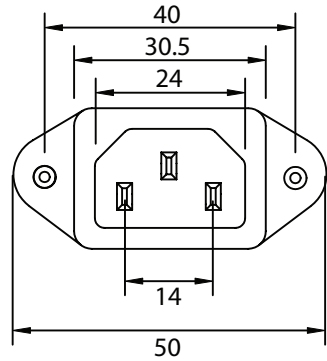
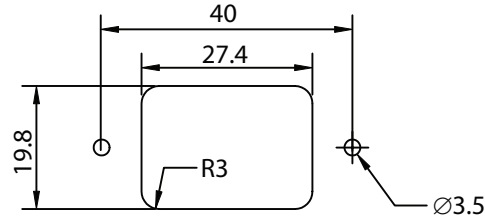


THESE DRAWINGS ARE THE PROPERTY OF QUALTEK ELECTRONICS AND NOT TO BE REPRODUCED FOR OR COMMUNICATED TO A THIRD PARTY WITHOUT THE EXPRESS WRITTEN PERMISSION OF AN OFFICER OF QUALTEK ELECTRONICS.

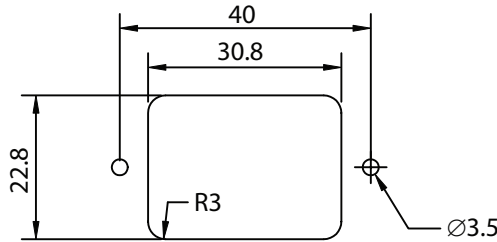
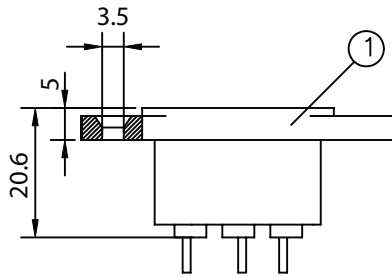
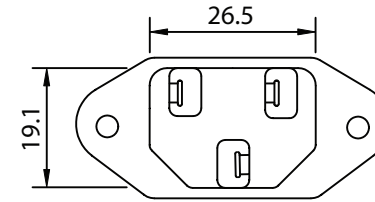
REVISION			
REV.	DESCRIPTION	DATE	APPROVED
B	RoHS Compliancy	06-01-06	DP



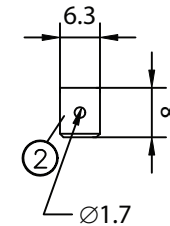
Countersunk Ear



For Front Mounting Use  
Panel Cut-Out



For Rear Mounting Use  
Panel Cut-Out



TERMINAL

**CONTROLLED**

NOTES:

MATERIAL:

HOUSING: THERMOPLASTIC UL 94VO FLAMMABILITY RATING

TERMINAL: COPPER ALLOY

RATING:

UL, CSA: 15A 250V AC

VDE: 10A 250V AC

APPROVALS: UL, CSA, VDE

COUNTERSINK

RoHS COMPLIANT

2	Terminal Copper Alloy Tin-Plated	3		
1	Housing Rivet Screw Type Thermoplastic	1		
<b>Qualtek Electronics Corp.</b>				
<b>PPC DIVISION</b>				
Dim range (mm)	Tolerance +/- (mm)	Part Number: <b>703W-00/08</b> <span style="border: 1px solid green; padding: 2px;">RoHS Compliant</span>		
0-1	0.15	Description: <b>AC RECEPTACLE</b>		
1-6	0.20			
6-18	0.30			
18-50	0.50			
50-120	0.70			
120-250	0.90	UNIT: mm	REV. B	
250-500	1.20	Drawn / Date	Checked / Date	Approved / Date
		B.ZHANG 08-27-02	08-27-02	JJH / 08-27-02