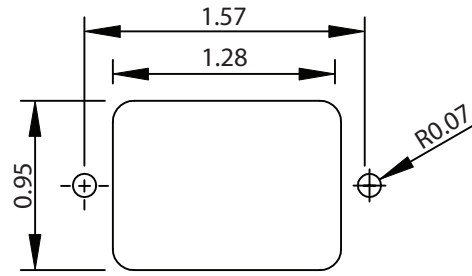
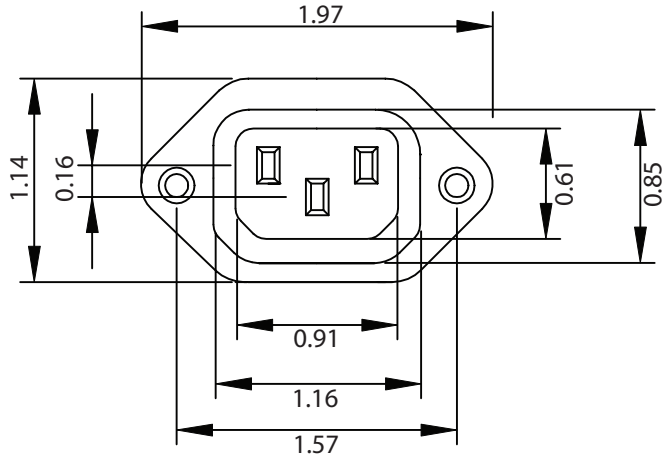
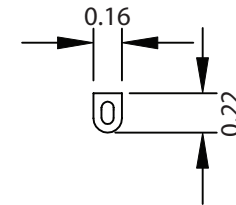
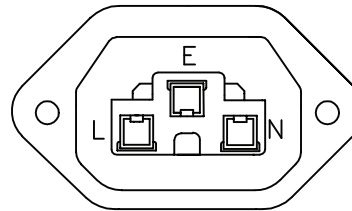
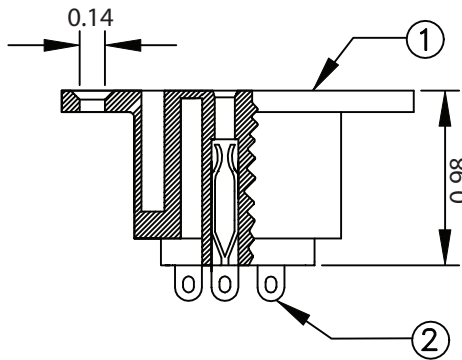
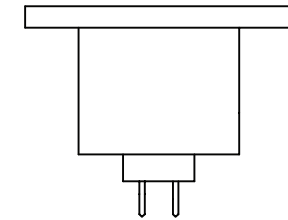


THESE DRAWINGS ARE THE PROPERTY OF QUALTEK ELECTRONICS AND NOT TO BE REPRODUCED FOR OR COMMUNICATED TO A THIRD PARTY WITHOUT THE EXPRESS WRITTEN PERMISSION OF AN OFFICER OF QUALTEK ELECTRONICS.

REVISION			
REV.	DESCRIPTION	DATE	APPROVED
B	RoHS Compliancy	06-01-06	DP



PANEL CUTOUT



CONTROLLED

NOTES:

MATERIAL:

HOUSING: THERMOPLASTIC
TERMINAL: COPPER ALLOY

RATING: 15A 250V AC

INSULATION RESISTANCE: OVER 100 OHM 500V DC

DIELECTRIC STRENGTH: 2000V AC ONE MINUTE

APPROVALS: UL, CSA, VDE

PANEL THICKNESS: 2.0mm

RoHS COMPLIANT

2	Contact PIN Bronze Strip t=0.8mm Tin-Plated	3
1	Housing Thermoplastic	1
Qualtek Electronics Corp.		
PPC DIVISION		
Part Number: 710W-00/01		RoHS Compliant
Description: AC RECEPTACLE		
Dim range (mm)	Tolerance +/- (mm)	UNIT: in
0-1	0.15	REV. B
1-6	0.20	
6-18	0.30	
18-50	0.50	
50-120	0.70	Drawn / Date
120-250	0.90	Checked / Date
250-500	1.20	Approved / Date
B.ZHANG 01-14-05		01-14-05
		JJH / 01-14-05