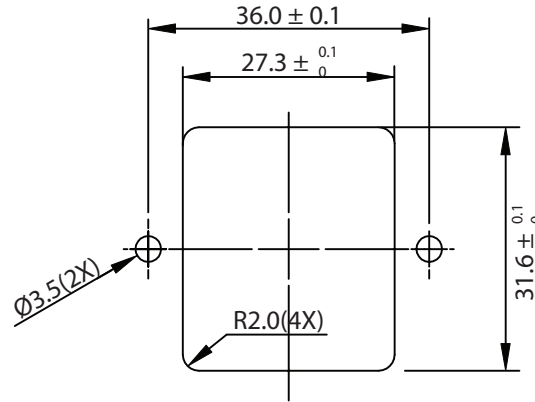
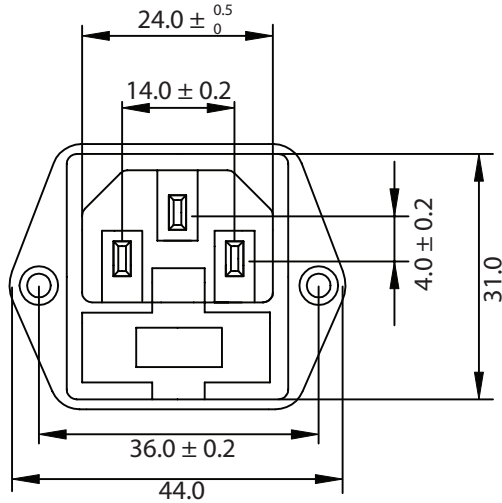
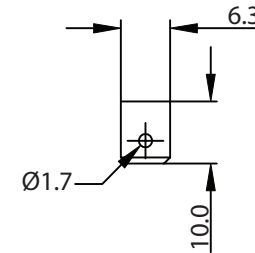
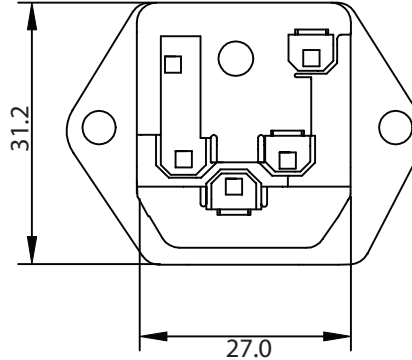
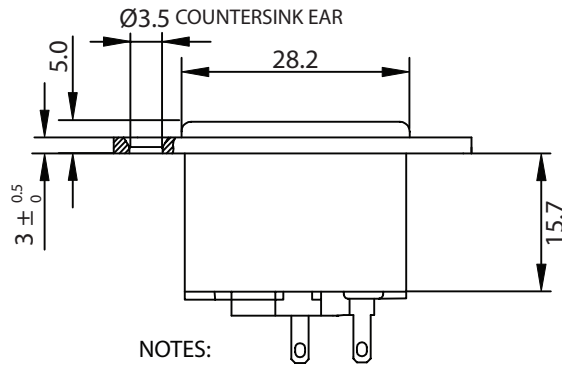
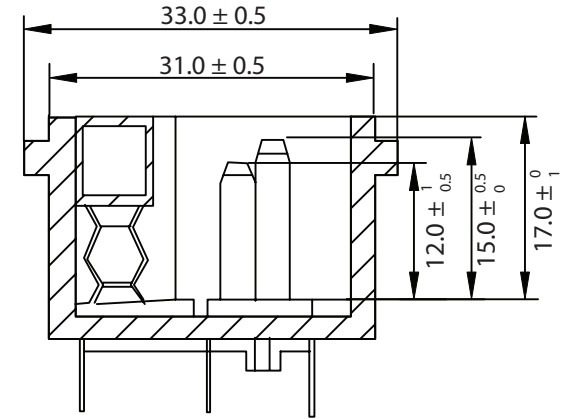


THESE DRAWINGS ARE THE PROPERTY OF QUALTEK ELECTRONICS AND NOT TO BE REPRODUCED FOR OR COMMUNICATED TO A THIRD PARTY WITHOUT THE EXPRESS WRITTEN PERMISSION OF AN OFFICER OF QUALTEK ELECTRONICS.

REVISION			
REV.	DESCRIPTION	DATE	APPROVED
B	RoHS Compliancy	06-01-06	DP



PANEL CUTOUT



NOTES:

MATERIAL: NYLON, FLAMMABILITY RATING UL 94 V-O  
 CONTACTS: BRASS, PINS NICKEL PLATED, TAGS TIN PLATED  
 RATING: 10A 250V AC  
 CONTACT RESISTANCE: <10 m OHM  
 INSULATION RESISTANCE: >10 M<sup>3</sup> OHM  
 AC BREAKDOWN:  
 POLE-POLE: 5kV  
 POLES-PANEL: 4.0kV  
 OPERATING TEMPERATURE: -40° C TO +70° C  
 MAX. PIN TEMPERATURE: +65° C  
 APPROVALS: UL, CSA, VDE  
 DUAL FUSEHOLDER, ONE ACTIVE, ONE SPARE  
 FUSES NOT INCLUDED - RECOMMENDED SIZE: 5 X 20mm  
 RoHS COMPLIANT

**CONTROLLED**

Dim range (mm)	Tolerance +/- (mm)	Qualtek Electronics Corp. PPC DIVISION		
		Part Number: 719W-00/04		RoHS Compliant
0-1	0.15	Description: SCREW MOUNT INLET WITH FUSEHOLDER		
1-6	0.20			
6-18	0.30			
18-50	0.50			
50-120	0.70	UNIT: mm	REV. B	
120-250	0.90	Drawn / Date	Checked / Date	Approved / Date
250-500	1.20	B.Zhang 01-27-04	01-27-04	JJH / 01-27-04