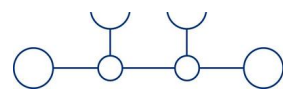
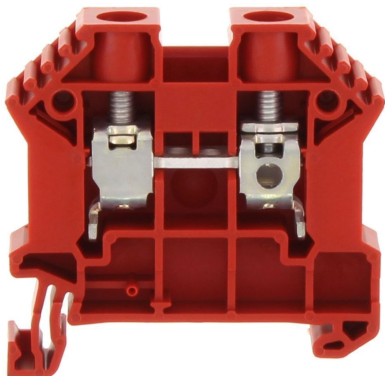


SRK 10/2A RD

17112.9



ERC

Feed-through terminal, Screw connection, Mounting type: Mounting rail TS 35/7.5, Rated cross-section: 16 mm², Width: 10 mm, Colour: Red

Commercial

General

Colour: Red

Country of origin: CZ

Customs number: 85369010

GTIN (EAN): 4044211169893

Packaging unit: 100

Product description: Feed-through terminal

Quantity unit: PC

Unit of weight: G

Weight per piece (including packaging): 15.91g

Weight per piece (not including packaging): 15.1g

Technical

Dimensions

Height TS 35/7.5: 47mm

Length: 48mm

Width: 10mm

Ratings

Contamination degree: 3

Current load, max.: 76A

Maximum power dissipation for nominal condition: 1.82W

Overvoltage category: III

Rated cross-section: 16mm²

Rated current: 57A

Rated impulse voltage: 8kV

Rated voltage: 1000V

Connection data

Connection position: Lateral

Connection principle: Screw connection

Connections: 2

Number of levels: 1

Number of terminals per level: 2

Screw head: Slotted

Screw threading: M 4

Stripping length: 10mm

Tightening torque, max.: 2.4Nm

Tightening torque, min.: 1.2Nm

Wire cross-section AWG, max.: 6

Wire cross-section AWG, min.: 18

Wire cross-section single core (rigid)/stranded, max.: 16mm²

Wire cross-section single-core (rigid) / stranded, AWG max.: 6

Wire cross-section single-core (rigid) / stranded, AWG min.: 18

Wire cross-section single-core (rigid) / stranded, min.: 0.2mm²

Wire cross-section stranded with wire-end ferrules, AWG max.: 8

Wire cross-section stranded with wire-end ferrules, AWG min.: 18

Wire cross-section stranded with wire-end ferrules, max.: 10mm²

Wire cross-section stranded with wire-end ferrules, min.: 0.2mm²

Wire cross-section stranded, AWG max.: 6

Wire cross-section stranded, AWG min.: 18

Wire cross-section stranded, max.: 16mm²

Wire cross-section stranded, min.: 0.2mm²

Further technical data

End plate required: ✓

Gauge plug acc. to EN 60 947-1: B7

Mounting type: Mounting rail TS 35/7,5

Number of cross-connection channels: 2

Number of test pick-off options: 1

Materials

Flammability class UL 94: V-0

Insulation housing: Polyamide 6.6

Working temperature, max.: 120°C

Working temperature, min.: -40°C

Approvals

Standards and regulations

EAC approval: TR ZU 004/2011

EAC approval granted: ✓

cUL Recognized

: E95701

cUL Recognized: 1

cUL Usegroup B: rated current: 65A

cUL Usegroup B: rated voltage: 600V

cUL Usegroup C: rated current: 65A

cUL Usegroup C: rated voltage: 600V

cUL approval: C22.2 No 158

cUL torque, max.: 2.4Nm

cUL torque, min.: 1.2Nm

cUL wire cross-section single-core (rigid) AWG, max.: 6

cUL wire cross-section single-core (rigid) AWG, min.: 18

cUL wire cross-section stranded AWG, max.: 6

cUL wire cross-section stranded AWG, min.: 18

cUL wire material: Cu

KEMA KEUR approval

KEMA KEUR approval: EN 60947-7-1:2009

KEMA KEUR approval granted: ✓

KEMA rated current: 76A

KEMA rated impulse voltage: 8kV

KEMA rated voltage: 1000V

KEMA torque, max.: 2.4Nm

KEMA torque, min.: 1.2Nm

KEMA wire cross-section single core (rigid), min.: 1.5mm²

KEMA wire cross-section single-core (rigid), max.: 16mm²

KEMA wire cross-section stranded, max.: 16mm²

KEMA wire cross-section stranded, min.: 1.5mm²

UL Recognized

UL File Number: E95701

UL Recognized: 1

UL Usegroup B: rated current: 65A

UL Usegroup B: rated voltage: 600V

UL Usegroup C: rated current: 65A

UL Usegroup C: rated voltage: 600V

UL approval: UL 1059

UL factory wiring: ✓

UL field wiring: ✓

UL torque, max.: 21.2Lb In.

UL torque, min.: 10.6Lb In.

UL wire cross-section single-core (rigid) AWG, max.: 6

UL wire cross-section single-core (rigid) AWG, min.: 18

UL wire cross-section stranded AWG, max.: 6

UL wire cross-section stranded AWG, min.: 18

UL wire material: Cu

CSA approval

CSA Usegroup C: rated current: 65A

CSA Usegroup C: rated voltage: 600V

CSA approval: C22.2 No 158

CSA approval granted: ✓

CSA torque, max.: 2.4Nm

CSA torque, min.: 1.2Nm

CSA wire cross-section AWG, max.: 6

CSA wire cross-section AWG, min.: 18

CSAus approval

CSAus Usegroup C: rated current: 65A

CSAus Usegroup C: rated voltage: 600V

CSAus approval: UL 1059

CSAus approval granted: ✓

CSAus torque, max.: 2.4Nm

CSAus torque, min.: 1.2Nm

CSAus wire cross-section AWG, max.: 6

CSAus wire cross-section AWG, min.: 18

Environment

Environmental Product Compliance

EU-POP Conform: Yes

PROP 65 Conform: Yes

REACH Candidate Substance Note: No

REACH Conform: Yes

REACH Reference date: 2025-06-25

RoHS Conform: Yes

TSCA Conform: Yes

Accessories

Screwdriver



SDB 0,8x4,0
1087.0

Cover



SAD 1/10/B YE
17298.8

Measurement pick-off terminal



SMAG 10/6 BG
17122.2



SMAG 10/6 BG
17122.2

End plate



AP 2,5-10 RB
2001.0

End stop

SES 35 GN
17250.1

Insulation cap for cross-connector

SQIK 2,5-10 BK
17200.4

Insulated cross-connector

SQI 10/9 BK

[17238.4](#)

SQI 10/3 BK

[17232.4](#)

SQI 10/7 BK

[17236.4](#)

SQI 10/30 BK

[17240.4](#)

SQI 10/5 BK

[17234.4](#)

SQI 10/2 BK

[17231.4](#)

SQI 10/4 BK

[17233.4](#)

SQI 10/6 BK

[17235.4](#)

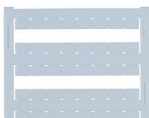
SQI 10/10 BK

[17239.4](#)

SQI 10/8 BK

[17237.4](#)

Quick marking



PMC SB 8/40 WH

[9323.7](#)

Partition plate



TW 2,5-10 RB

[2002.0](#)

Test adapters



STA 5/1 BG
17260.2



STA ZP1 BG
17261.2



STA ZP3 BG
17262.2



STA 5/1 BG
17260.2



STA ZP1 BG
17261.2



STA ZP3 BG
17262.2
