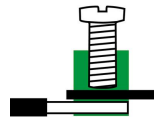
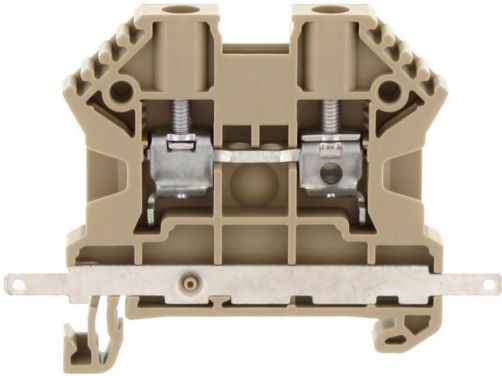


# SRK 4/2A SAS BG

17116.2



Feed-through terminal, Screw connection, Mounting type: Mounting rail TS 35/7.5, Rated cross-section: 4 mm<sup>2</sup>, Width: 6 mm, Colour: Beige

## Commercial

### General

Colour: Beige

Country of origin: DE

Customs number: 85369010

GTIN (EAN): 4044211148980

Packaging unit: 80

Product description: Feed-through terminal

Quantity unit: PC

Unit of weight: G

Weight per piece (including packaging): 11.1g

Weight per piece (not including packaging): 10.2g

## Technical

---

### Dimensions

---

Height TS 35/7.5: 47mm

Length: 62.5mm

Width: 6mm

---

### Ratings

---

Contamination degree: 3

Current load, max.: 41A

Maximum power dissipation for nominal condition: 1.02W

Overvoltage category: III

Rated cross-section: 4mm<sup>2</sup>

Rated current: 32A

Rated impulse voltage: 8kV

Rated voltage: 400V

---

### Connection data

---

Connection position: Lateral

Connection principle: Screw connection

Connections: 4

Number of levels: 1

Number of terminals per level: 2

Screw head: Slotted

Screw threading: M 3

Special connection: Spade flat plug Faston 2.8mm

Stripping length: 10mm

Tightening torque, max.: 1Nm

Tightening torque, min.: 0.5Nm

Wire cross-section AWG, max.: 10

Wire cross-section AWG, min.: 26

Wire cross-section single core (rigid)/stranded, max.: 6mm<sup>2</sup>

Wire cross-section single-core (rigid) / stranded, AWG max.: 10

Wire cross-section single-core (rigid) / stranded, AWG min.: 26

Wire cross-section single-core (rigid) / stranded, min.: 0.2mm<sup>2</sup>

Wire cross-section stranded with wire-end ferrules, AWG max.: 12

Wire cross-section stranded with wire-end ferrules, AWG min.: 26

Wire cross-section stranded with wire-end ferrules, max.: 4mm<sup>2</sup>

---

Wire cross-section stranded with wire-end ferrules, min.: 0.2mm<sup>2</sup>

Wire cross-section stranded, AWG max.: 10

Wire cross-section stranded, AWG min.: 26

Wire cross-section stranded, max.: 6mm<sup>2</sup>

Wire cross-section stranded, min.: 0.2mm<sup>2</sup>

### Further technical data

---

End plate required: ✓

Gauge plug acc. to EN 60 947-1: A4

Mounting type: Mounting rail TS 35/7,5

Number of cross-connection channels: 2

Number of test pick-off options: 1

### Materials

---

Flammability class UL 94: V-0

Insulation housing: Polyamide 6.6

Working temperature, max.: 120°C

Working temperature, min.: -40°C

## Approvals

---

### Standards and regulations

---

EAC approval: TR ZU 004/2011

EAC approval granted: ✓

## Environment

---

### Environmental Product Compliance

---

EU-POP Conform: Yes

PROP 65 Conform: Yes

REACH Candidate Substance Note: No

REACH Conform: Yes

REACH Reference date: 2025-06-25

RoHS Conform: Yes

TSCA Conform: Yes

---

## Accessories

---

### Screwdriver



**SDB 0,6x3,5**  
1086.0

### Cover



**SAD 1/6/B YE**  
17296.8

### Measurement pick-off terminal



**SMAG 4/2,5 BG**  
17120.2

### End plate



**AP 2,5-10 RB**  
2001.0

### End stop

**SES 35 GN**  
17250.1

### Insulation cap for cross-connector

**SQIK 2,5-10 BK**  
17200.4

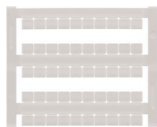
### Insulated cross-connector

**SQI 4/3 BK**  
17212.4

---

## Quick marking

---



**PMC SB 6/50 WH**

4702.7

---

## Test adapters

---



**STA 5/1 BG**

17260.2

---



**STA ZP1 BG**

17261.2

---



**STA 5/1 BG**

17260.2

---



**STA ZP1 BG**

17261.2

---