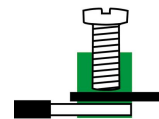
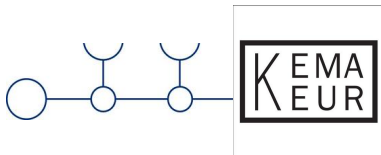
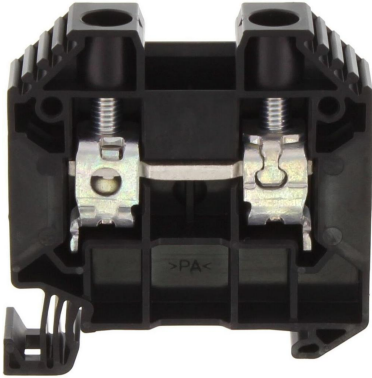


SRK 16/2A BK

17124.4



Feed-through terminal, Screw connection, Mounting type: Mounting rail TS 35/7.5, Rated cross-section: 16 mm², Width: 12.1 mm, Colour: Black

Commercial

General

Colour: Black

Country of origin: CZ

Customs number: 85369010

GTIN (EAN): 4044211180966

Packaging unit: 50

Product description: Feed-through terminal

Quantity unit: PC

Unit of weight: G

Weight per piece (including packaging): 29.6g

Weight per piece (not including packaging): 27.9g

Technical

Dimensions

Height TS 35/7.5: 55mm

Length: 53mm

Width: 12.1mm

Ratings

Contamination degree: 3

Current load, max.: 101A

Maximum power dissipation for nominal condition: 2.43W

Overvoltage category: III

Rated cross-section: 16mm²

Rated current: 76A

Rated impulse voltage: 8kV

Rated voltage: 1000V

Connection data

Connection position: Lateral

Connection principle: Screw connection

Connections: 2

Number of levels: 1

Number of terminals per level: 2

Screw head: Slotted

Screw threading: M 5

Stripping length: 14mm

Tightening torque, max.: 3Nm

Tightening torque, min.: 2.5Nm

Wire cross-section AWG, max.: 4

Wire cross-section AWG, min.: 16

Wire cross-section single core (rigid)/stranded, max.: 25mm²

Wire cross-section single-core (rigid) / stranded, AWG max.: 4

Wire cross-section single-core (rigid) / stranded, AWG min.: 16

Wire cross-section single-core (rigid) / stranded, min.: 1.5mm²

Wire cross-section stranded with wire-end ferrules, AWG max.: 6

Wire cross-section stranded with wire-end ferrules, AWG min.: 16

Wire cross-section stranded with wire-end ferrules, max.: 16mm²

Wire cross-section stranded with wire-end ferrules, min.: 1mm²

Wire cross-section stranded, AWG max.: 4

Wire cross-section stranded, AWG min.: 16

Wire cross-section stranded, max.: 25mm²

Wire cross-section stranded, min.: 1.5mm²

Further technical data

End plate required: ✓

Gauge plug acc. to EN 60 947-1: A7

Mounting type: Mounting rail TS 35/7,5

Number of cross-connection channels: 2

Number of test pick-off options: 1

Materials

Flammability class UL 94: V-0

Insulation housing: Polyamide 6.6

Working temperature, max.: 120°C

Working temperature, min.: -40°C

Approvals

Standards and regulations

EAC approval: TR ZU 004/2011

EAC approval granted: ✓

KEMA KEUR approval

KEMA KEUR approval: EN 60947-7-1:2009

KEMA KEUR approval granted: ✓

KEMA rated current: 76A

KEMA rated impulse voltage: 8kV

KEMA rated voltage: 1000V

KEMA torque, max.: 3Nm

KEMA torque, min.: 2.5Nm

KEMA wire cross-section single core (rigid), min.: 1.5mm²

KEMA wire cross-section single-core (rigid), max.: 16mm²

KEMA wire cross-section stranded, max.: 16mm²

KEMA wire cross-section stranded, min.: 1.5mm²

UL Recognized

UL File Number: E95701

UL Recognized: 1

UL Usegroup B: rated current: 80A

UL Usegroup B: rated voltage: 600V

UL Usegroup C: rated current: 80A

UL Usegroup C: rated voltage: 600V

UL approval: UL 1059

UL factory wiring: ✓

UL field wiring: ✓

UL torque, max.: 26.5Lb In.

UL torque, min.: 22.1Lb In.

UL wire cross-section single-core (rigid) AWG, max.: 4

UL wire cross-section single-core (rigid) AWG, min.: 16

UL wire cross-section stranded AWG, max.: 4

UL wire cross-section stranded AWG, min.: 16

UL wire material: Cu

CSA approval

CSA Usegroup C: rated current: 80A

CSA Usegroup C: rated voltage: 600V

CSA approval: C22.2 No 158

CSA approval granted: ✓

CSA torque, max.: 3Nm

CSA torque, min.: 2.5Nm

CSA wire cross-section AWG, max.: 4

CSA wire cross-section AWG, min.: 16

CSAus approval

CSAus Usegroup C: rated current: 80A

CSAus Usegroup C: rated voltage: 600V

CSAus approval: UL 1059

CSAus approval granted: ✓

CSAus torque, max.: 3Nm

CSAus torque, min.: 2.5Nm

CSAus wire cross-section AWG, max.: 4

CSAus wire cross-section AWG, min.: 16

Environment

Environmental Product Compliance

EU-POP Conform: Yes

PROP 65 Conform: Yes

REACH Candidate Substance Note: No

REACH Conform: Yes

REACH Reference date: 2025-06-25

RoHS Conform: Yes

TSCA Conform: Yes

Accessories

Cover



SAD 1/12/B WH
[17248.7](#)



SAD 1/12/B YE
[17249.8](#)

Measurement pick-off terminal

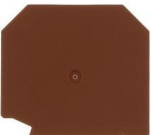


SMAG 16/6 BG
[17135.2](#)



SMAG 16/6 BG
[17135.2](#)

End plate



SAP 16/2A RB
[17254.0](#)

End stop

SES 35 GN

17250.1

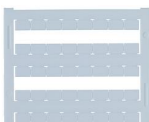
Insulated cross-connector



SQI 16/2 YE

17247.8

Quick marking



PMC SB 8/40 WH

9323.7

Screwdriver



SDB 0,8x4,0

1087.0
