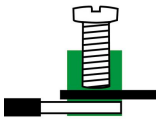
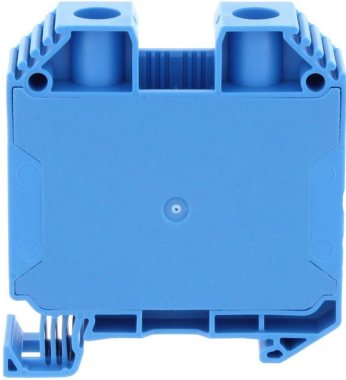
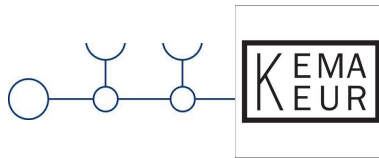


# SRK 35/2A BU

17140.5



ERC



Feed-through terminal, Screw connection, Mounting type: Mounting rail TS 35/7.5, Rated cross-section: 35 mm<sup>2</sup>, Width: 16.1 mm, Colour: Blue

## Commercial

### General

Colour: Blue

Country of origin: CZ

Customs number: 85369010

GTIN (EAN): 4044211186623

Packaging unit: 20

Product description: Feed-through terminal

Quantity unit: PC

Unit of weight: G

Weight per piece (including packaging): 60.7g

Weight per piece (not including packaging): 58g

---

## Technical

---

### Dimensions

---

Height TS 35/7.5: 65.5mm

Length: 59mm

Width: 16.1mm

---

### Ratings

---

Contamination degree: 3

Current load, max.: 150A

Maximum power dissipation for nominal condition: 4W

Overvoltage category: III

Rated cross-section: 35mm<sup>2</sup>

Rated current: 125A

Rated impulse voltage: 8kV

Rated voltage: 1000V

---

### Connection data

---

Connection position: Lateral

Connection principle: Screw connection

Connections: 2

Number of levels: 1

Number of terminals per level: 2

Screw head: Slotted

Screw threading: M 6

Stripping length: 18mm

Tightening torque, max.: 3.7Nm

Tightening torque, min.: 3.2Nm

Wire cross-section AWG, max.: 1/0

Wire cross-section AWG, min.: 16

Wire cross-section single core (rigid)/stranded, max.: 50mm<sup>2</sup>

Wire cross-section single-core (rigid) / stranded, AWG max.: 1/0

Wire cross-section single-core (rigid) / stranded, AWG min.: 16

Wire cross-section single-core (rigid) / stranded, min.: 1.5mm<sup>2</sup>

Wire cross-section stranded with wire-end ferrules, AWG max.: 2

---

Wire cross-section stranded with wire-end ferrules, AWG min.: 16

Wire cross-section stranded with wire-end ferrules, max.: 35mm<sup>2</sup>

Wire cross-section stranded with wire-end ferrules, min.: 1.5mm<sup>2</sup>

Wire cross-section stranded, AWG max.: 1/0

Wire cross-section stranded, AWG min.: 16

Wire cross-section stranded, max.: 50mm<sup>2</sup>

Wire cross-section stranded, min.: 1.5mm<sup>2</sup>

### Further technical data

Gauge plug acc. to EN 60 947-1: B9

Mounting type: Mounting rail TS 35/7,5

Number of cross-connection channels: 2

Number of test pick-off options: 1

### Materials

Flammability class UL 94: V-0

Insulation housing: Polyamide 6.6

Working temperature, max.: 120°C

Working temperature, min.: -40°C

## Approvals

---

### Standards and regulations

EAC approval: TR ZU 004/2011

EAC approval granted: ✓

### KEMA KEUR approval

KEMA KEUR approval: EN 60947-7-1:2009

KEMA KEUR approval granted: ✓

KEMA rated current: 125A

KEMA rated impulse voltage: 8kV

KEMA rated voltage: 1000V

KEMA torque, max.: 3.7Nm

KEMA torque, min.: 3.2Nm

KEMA wire cross-section single core (rigid), min.: 2.5mm<sup>2</sup>

KEMA wire cross-section single-core (rigid), max.: 35mm<sup>2</sup>

KEMA wire cross-section stranded, max.: 35mm<sup>2</sup>

KEMA wire cross-section stranded, min.: 2.5mm<sup>2</sup>

---

## UL Recognized

UL File Number: E95701

UL Recognized: 1

UL Usegroup B: rated current: 150A

UL Usegroup B: rated voltage: 600V

UL Usegroup C: rated current: 150A

UL Usegroup C: rated voltage: 600V

UL approval: UL 1059

UL factory wiring: ✓

UL field wiring: ✓

UL torque, max.: 32.7Lb In.

UL torque, min.: 28.3Lb In.

UL wire cross-section single-core (rigid) AWG, max.: 1/0

UL wire cross-section single-core (rigid) AWG, min.: 16

UL wire cross-section stranded AWG, max.: 1/0

UL wire cross-section stranded AWG, min.: 16

UL wire material: Cu

## CSA approval

CSA Usegroup C: rated current: 150A

CSA Usegroup C: rated voltage: 600V

CSA approval: C22.2 No 158

CSA approval granted: ✓

CSA torque, max.: 3.7Nm

CSA torque, min.: 3.2Nm

CSA wire cross-section AWG, max.: 1/0

CSA wire cross-section AWG, min.: 16

## CSAus approval

CSAus Usegroup C: rated current: 150A

CSAus Usegroup C: rated voltage: 600V

CSAus approval: UL 1059

CSAus approval granted: ✓

CSAus torque, max.: 3.7Nm

CSAus torque, min.: 3.2Nm

CSAus wire cross-section AWG, max.: 1/0

CSAus wire cross-section AWG, min.: 16

---

## Environment

---

### Environmental Product Compliance

---

EU-POP Conform: Yes

PROP 65 Conform: Yes

REACH Candidate Substance Note: No

REACH Conform: Yes

REACH Reference date: 2025-06-25

RoHS Conform: Yes

TSCA Conform: Yes

---

## Accessories

---

### Screwdriver

---



**SDB 1,2x6,5**  
1088.0

---

### Cover

---



**SAD 1/16/B YE**  
17281.8

---



**SAD 1/16/B WH**  
17282.7

---

### Measurement pick-off terminal

---



**SMAG 35/6 BG**  
17148.2

---



**SMAG 35/6 BG**  
17148.2

---

## End stop

---

**SES 35 GN**

17250.1

---

## Insulated cross-connector

---



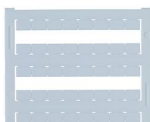
**SQI 35/2 YE**

17252.8

---

## Quick marking

---



**PMC SB 8/40 WH**

9323.7

---