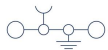
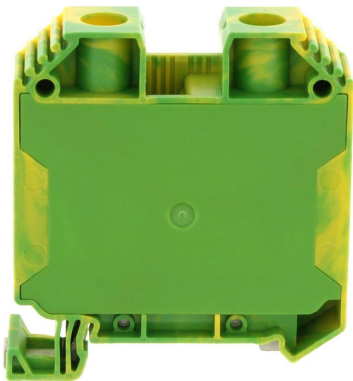


# SSL 35/2A/IS GNYE

17147.2



Protective earth terminal, Screw connection, Mounting type: Mounting rail TS 35/7.5, Rated cross-section: 35 mm<sup>2</sup>, Width: 16.1 mm, Colour: Green-yellow

## Commercial

### General

Colour: Green-yellow

Country of origin: CZ

Customs number: 85369010

GTIN (EAN): 4044211186678

Packaging unit: 20

Product description: Protective earth terminal

Quantity unit: PC

Unit of weight: G

Weight per piece (including packaging): 86.7g

Weight per piece (not including packaging): 84g

---

## Technical

---

### Dimensions

---

Height TS 35/7.5: 65.5mm

Length: 59mm

Width: 16.1mm

---

### Ratings

---

Contamination degree: 3

Overvoltage category: III

Rated cross-section: 35mm<sup>2</sup>

---

### Connection data

---

Connection position: Lateral

Connection principle: Screw connection

Connections: 2

Number of levels: 1

Number of terminals per level: 2

Screw head: Inner hex (Allen)

Screw threading: M 6

Stripping length: 18mm

Tightening torque, max.: 3.7Nm

Tightening torque, min.: 3.2Nm

Wire cross-section AWG, max.: 1/0

Wire cross-section AWG, min.: 16

Wire cross-section single core (rigid)/stranded, max.: 50mm<sup>2</sup>

Wire cross-section single-core (rigid) / stranded, AWG max.: 1/0

Wire cross-section single-core (rigid) / stranded, AWG min.: 16

Wire cross-section single-core (rigid) / stranded, min.: 1.5mm<sup>2</sup>

Wire cross-section stranded with wire-end ferrules, AWG max.: 2

Wire cross-section stranded with wire-end ferrules, AWG min.: 16

Wire cross-section stranded with wire-end ferrules, max.: 35mm<sup>2</sup>

Wire cross-section stranded with wire-end ferrules, min.: 1.5mm<sup>2</sup>

Wire cross-section stranded, AWG max.: 1/0

Wire cross-section stranded, AWG min.: 16

---

Wire cross-section stranded, max.: 50mm<sup>2</sup>

Wire cross-section stranded, min.: 1.5mm<sup>2</sup>

### Further technical data

Gauge plug acc. to EN 60 947-1: B9

Mounting type: Mounting rail TS 35/7,5

Number of cross-connection channels: 1

Number of test pick-off options: 1

### Materials

Flammability class UL 94: V-0

Insulation housing: Polyamide 6.6

Working temperature, max.: 120°C

Working temperature, min.: -40°C

## Approvals

---

### Standards and regulations

EAC approval: TR ZU 004/2011

EAC approval granted: ✓

### KEMA KEUR approval

KEMA KEUR approval: EN 60947-7-2:2009

KEMA KEUR approval granted: ✓

KEMA torque, max.: 3.7Nm

KEMA torque, min.: 3.2Nm

KEMA wire cross-section single core (rigid), min.: 2.5mm<sup>2</sup>

KEMA wire cross-section single-core (rigid), max.: 35mm<sup>2</sup>

KEMA wire cross-section stranded, max.: 35mm<sup>2</sup>

KEMA wire cross-section stranded, min.: 2.5mm<sup>2</sup>

### UL Recognized

UL File Number: E95701

UL Recognized: 1

UL approval: UL 1059

UL factory wiring: ✓

UL field wiring: ✓

UL torque, max.: 32.7Lb In.

UL torque, min.: 28.3Lb In.

---

UL wire cross-section single-core (rigid) AWG, max.: 1/0

UL wire cross-section single-core (rigid) AWG, min.: 16

UL wire cross-section stranded AWG, max.: 1/0

UL wire cross-section stranded AWG, min.: 16

UL wire material: Cu

### **CSA approval**

CSA approval: C22.2 No 158

CSA approval granted: ✓

CSA torque, max.: 3.7Nm

CSA torque, min.: 3.2Nm

CSA wire cross-section AWG, max.: 1/0

CSA wire cross-section AWG, min.: 16

### **CSAus approval**

CSAus approval: UL 1059

CSAus approval granted: ✓

CSAus torque, max.: 3.7Nm

CSAus torque, min.: 3.2Nm

CSAus wire cross-section AWG, max.: 1/0

CSAus wire cross-section AWG, min.: 16

## **Environment**

---

### **Environmental Product Compliance**

---

EU-POP Conform: Yes

PROP 65 Conform: Yes

REACH Candidate Substance Note: No

REACH Conform: Yes

REACH Reference date: 2025-06-25

RoHS Conform: Yes

TSCA Conform: Yes

---

## Accessories

---

### Cover



**SAD 1/16/B YE**  
[17281.8](#)



**SAD 1/16/B WH**  
[17282.7](#)

### Measurement pick-off terminal



**SMAG 35/6 BG**  
[17148.2](#)



**SMAG 35/6 BG**  
[17148.2](#)

### End stop

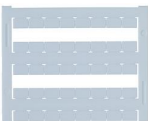
**SES 35 GN**  
[17250.1](#)

### Insulated cross-connector



**SQI 35/2 YE**  
[17252.8](#)

### Quick marking



**PMC SB 8/40 WH**  
[9323.7](#)

### Allen key socket wrench



**ISKS 5**  
[2818.0](#)

---



