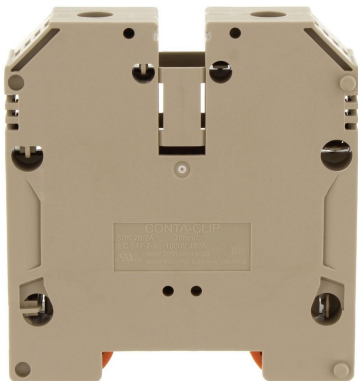


SRK 70/2A BG

17161.2



Feed-through terminal, Screw connection, Mounting type: Mounting rail TS 35/7.5, Rated cross-section: 70 mm², Width: 20.5 mm, Colour: Beige

Commercial

General

Colour: Beige

Country of origin: CZ

Customs number: 85369010

GTIN (EAN): 4044211189273

Packaging unit: 10

Product description: Feed-through terminal

Quantity unit: PC

Unit of weight: G

Weight per piece (including packaging): 151g

Weight per piece (not including packaging): 141g

Technical

Dimensions

Height TS 35/7.5: 84mm

Length: 76.5mm

Width: 20.5mm

Ratings

Contamination degree: 3

Current load, max.: 232A

Maximum power dissipation for nominal condition: 6.14W

Overvoltage category: III

Rated cross-section: 70mm²

Rated current: 192A

Rated impulse voltage: 8kV

Rated voltage: 1000V

Connection data

Connection position: Lateral

Connection principle: Screw connection

Connections: 2

Number of levels: 1

Number of terminals per level: 2

Screw head: Inner hex (Allen)

Screw threading: M 8

Stripping length: 22mm

Tightening torque, max.: 12Nm

Tightening torque, min.: 6Nm

Wire cross-section AWG, max.: 000

Wire cross-section AWG, min.: 6

Wire cross-section single core (rigid)/stranded, max.: 95mm²

Wire cross-section single-core (rigid) / stranded, AWG max.: 000

Wire cross-section single-core (rigid) / stranded, AWG min.: 6

Wire cross-section single-core (rigid) / stranded, min.: 10mm²

Wire cross-section stranded with wire-end ferrules, AWG max.: 00

Wire cross-section stranded with wire-end ferrules, AWG min.: 6

Wire cross-section stranded with wire-end ferrules, max.: 70mm²

Wire cross-section stranded with wire-end ferrules, min.: 10mm²

Wire cross-section stranded, AWG max.: 000

Wire cross-section stranded, AWG min.: 6

Wire cross-section stranded, max.: 70mm²

Wire cross-section stranded, min.: 10mm²

Further technical data

Assembly instruction: Caution! When connecting ribbon conductors, insert the EP insert plate into the clamping yoke. This ensures a safe and reliable connection.

Gauge plug acc. to EN 60 947-1: B11

Mounting type: Mounting rail TS 35/7,5

Number of cross-connection channels: 1

Number of test pick-off options: 1

Materials

Flammability class UL 94: V-0

Insulation housing: Polyamide 6.6

Working temperature, max.: 120°C

Working temperature, min.: -40°C

Approvals

Standards and regulations

EAC approval: TR ZU 004/2011

EAC approval granted: ✓

cUL Recognized

: E95701

cUL Recognized: 1

cUL Usegroup B: rated current: 205A

cUL Usegroup B: rated voltage: 600V

cUL Usegroup C: rated voltage: 600V

cUL Usegroup D: rated current: 205A

cUL Usegroup D: rated voltage: 600V

cUL Usegroup E: rated current: 205A

cUL Usegroup E: rated voltage: 1000V

cUL approval: C22.2 No 158

cUL torque, max.: 12Nm

cUL torque, min.: 6Nm

cUL wire cross-section single-core (rigid) AWG, max.: 3/0

cUL wire cross-section single-core (rigid) AWG, min.: 6

cUL wire cross-section stranded AWG, max.: 3/0

cUL wire cross-section stranded AWG, min.: 6

cUL wire material: Cu

KEMA KEUR approval

KEMA KEUR approval: EN 60947-7-1:2009

KEMA KEUR approval granted: ✓

KEMA rated current: 192A

KEMA rated impulse voltage: 8kV

KEMA rated voltage: 1000V

KEMA torque, max.: 12Nm

KEMA torque, min.: 6Nm

KEMA wire cross-section single core (rigid), min.: 10mm²

KEMA wire cross-section single-core (rigid), max.: 95mm²

KEMA wire cross-section stranded, max.: 95mm²

KEMA wire cross-section stranded, min.: 10mm²

UL Recognized

UL File Number: E95701

UL Recognized: 1

UL Usegroup B: rated current: 205A

UL Usegroup B: rated voltage: 600V

UL Usegroup C: rated current: 205A

UL Usegroup C: rated voltage: 600V

UL Usegroup D: rated current: 205A

UL Usegroup D: rated voltage: 600V

UL Usegroup E: rated current: 205A

UL Usegroup E: rated voltage: 1000V

UL approval: UL 1059

UL factory wiring: ✓

UL field wiring: ✓

UL torque, max.: 106.2Lb In.

UL torque, min.: 53.1Lb In.

UL wire cross-section single-core (rigid) AWG, max.: 3/0

UL wire cross-section single-core (rigid) AWG, min.: 6

UL wire cross-section stranded AWG, max.: 3/0

UL wire cross-section stranded AWG, min.: 6

UL wire material: Cu

Environment

Environmental Product Compliance

EU-POP Conform: Yes

PROP 65 Conform: Yes

REACH Candidate Substance Note: No

REACH Conform: Yes

REACH Reference date: 2025-06-25

RoHS Conform: Yes

TSCA Conform: Yes

Accessories

Measurement pick-off terminal



MAG 50 BG

1121.2

Cover



SAD 1/20/B YE

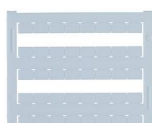
17285.8



SAD 1/20/B WH

17286.7

Quick marking



PMC SB 8/40 WH

9323.7

End stop



ES 35/K/ST BG

2828.0

SES 35 GN

17250.1

Inlay profile



EP 50

2274.0

Allen key socket wrench



ISKS 6

2772.0

Cross-connector



SQ 70/4

17267.0



SQ 70/2

17265.0



SQ 70/3

17266.0