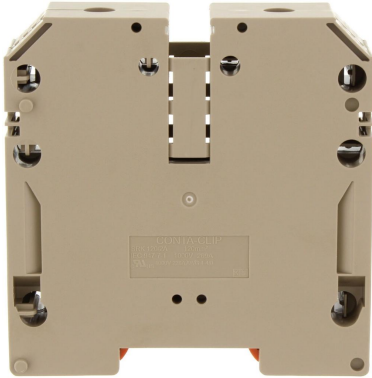
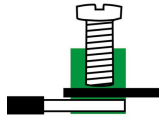


SRK 120/2A BG

17165.2



M10



UL[®] US

EAC

Feed-through terminal, Screw connection, Mounting type: Mounting rail TS 35/7.5, Rated cross-section: 120 mm², Width: 27 mm, Colour: Beige

Commercial

General

Colour: Beige

Country of origin: CZ

Customs number: 85369010

GTIN (EAN): 4044211189372

Packaging unit: 5

Product description: Feed-through terminal

Quantity unit: PC

Unit of weight: G

Weight per piece (including packaging): 301.9g

Weight per piece (not including packaging): 280.7g

Technical

Dimensions

Height TS 35/7.5: 91mm

Length: 91mm

Width: 27mm

Ratings

Contamination degree: 3

Current load, max.: 290A

Maximum power dissipation for nominal condition: 8.61W

Overvoltage category: III

Rated cross-section: 120mm²

Rated current: 269A

Rated impulse voltage: 8kV

Rated voltage: 1000V

Connection data

Connection position: Lateral

Connection principle: Screw connection

Connections: 2

Number of levels: 1

Number of terminals per level: 2

Screw head: Inner hex (Allen)

Screw threading: M 10

Stripping length: 27mm

Tightening torque, max.: 20Nm

Tightening torque, min.: 12Nm

Wire cross-section AWG, max.: 0000

Wire cross-section AWG, min.: 4

Wire cross-section single core (rigid)/stranded, max.: 150mm²

Wire cross-section single-core (rigid) / stranded, AWG max.: 0000

Wire cross-section single-core (rigid) / stranded, AWG min.: 4

Wire cross-section single-core (rigid) / stranded, min.: 16mm²

Wire cross-section stranded with wire-end ferrules, AWG max.: 0000

Wire cross-section stranded with wire-end ferrules, AWG min.: 4

Wire cross-section stranded with wire-end ferrules, max.: 95mm²

Wire cross-section stranded with wire-end ferrules, min.: 16mm²

Wire cross-section stranded, AWG max.: 0000

Wire cross-section stranded, AWG min.: 4

Wire cross-section stranded, max.: 120mm²

Wire cross-section stranded, min.: 16mm²

Further technical data

Assembly instruction: Caution! When connecting ribbon conductors, insert the EP insert plate into the clamping yoke. This ensures a safe and reliable connection.

Gauge plug acc. to EN 60 947-1: B13

Mounting type: Mounting rail TS 35/7,5

Number of cross-connection channels: 1

Number of test pick-off options: 1

Materials

Flammability class UL 94: V-0

Insulation housing: Polyamide 6.6

Working temperature, max.: 120°C

Working temperature, min.: -40°C

Approvals

Standards and regulations

EAC approval: TR ZU 004/2011

EAC approval granted: ✓

cUL Recognized

: E95701

cUL Recognized: 1

cUL Usegroup B: rated current: 228A

cUL Usegroup B: rated voltage: 600V

cUL Usegroup C: rated voltage: 600V

cUL Usegroup D: rated current: 228A

cUL Usegroup D: rated voltage: 600V

cUL Usegroup E: rated current: 228A

cUL Usegroup E: rated voltage: 1000V

cUL approval: C22.2 No 158

cUL torque, max.: 20Nm

cUL torque, min.: 12Nm

cUL wire cross-section single-core (rigid) AWG, max.: 4/0

cUL wire cross-section single-core (rigid) AWG, min.: 4

cUL wire cross-section stranded AWG, max.: 4/0

cUL wire cross-section stranded AWG, min.: 4

cUL wire material: Cu

KEMA KEUR approval

KEMA KEUR approval: EN 60947-7-1:2009

KEMA KEUR approval granted: ✓

KEMA rated current: 269A

KEMA rated impulse voltage: 8kV

KEMA rated voltage: 1000V

KEMA torque, max.: 20Nm

KEMA torque, min.: 12Nm

KEMA wire cross-section single core (rigid), min.: 16mm²

KEMA wire cross-section single-core (rigid), max.: 150mm²

KEMA wire cross-section stranded, max.: 150mm²

KEMA wire cross-section stranded, min.: 16mm²

UL Recognized

UL File Number: E95701

UL Recognized: 1

UL Usegroup B: rated current: 228A

UL Usegroup B: rated voltage: 600V

UL Usegroup C: rated current: 228A

UL Usegroup C: rated voltage: 600V

UL Usegroup D: rated current: 228A

UL Usegroup D: rated voltage: 600V

UL Usegroup E: rated current: 228A

UL Usegroup E: rated voltage: 1000V

UL approval: UL 1059

UL factory wiring: ✓

UL field wiring: ✓

UL torque, max.: 177Lb In.

UL torque, min.: 106.2Lb In.

UL wire cross-section single-core (rigid) AWG, max.: 4/0

UL wire cross-section single-core (rigid) AWG, min.: 4

UL wire cross-section stranded AWG, max.: 4/0

UL wire cross-section stranded AWG, min.: 4

UL wire material: Cu

Environment

Environmental Product Compliance

EU-POP Conform: Yes

PROP 65 Conform: Yes

REACH Candidate Substance Note: No

REACH Conform: Yes

REACH Reference date: 2025-06-25

RoHS Conform: Yes

TSCA Conform: Yes

Accessories

Measurement pick-off terminal



MAG 150/240 BG

1125.2

Cover



SAD 1/27/B WH

17290.7



SAD 1/27/B YE

17291.8

Quick marking



PMC SB 8/40 WH

9323.7

End stop



ES 35/K/ST BG

2828.0

SES 35 GN

17250.1

Inlay profile



EP 95

2275.0

Allen key socket wrench



ISKS 6

2772.0

Cross-connector



SQ 120/4

17280.0



SQ 120/3

17279.0



SQ 120/2

17278.0