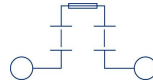
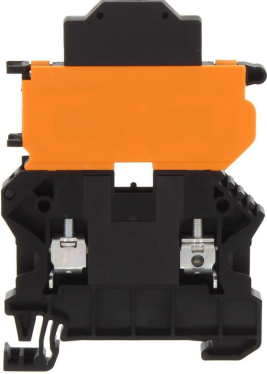


# SSIK 4/2A/LED 500V AC/DC BK

17174.4



Fuse-disconnect terminal, Screw connection, Mounting type: Mounting rail TS 35/7.5, Rated cross-section: 4 mm<sup>2</sup>, Width: 6.1 mm, Colour: Black

## Commercial

### General

Colour: Black

Country of origin: DE

Customs number: 85369010

GTIN (EAN): 4044211180461

Packaging unit: 25

Product description: Fuse-disconnect terminal

Quantity unit: PC

Unit of weight: G

Weight per piece (including packaging): 19.96g

Weight per piece (not including packaging): 19.86g

## Technical

---

### Dimensions

---

Height TS 35/7.5: 84mm

Length: 58mm

Width: 6.1mm

---

### Ratings

---

Contamination degree: 3

Overvoltage category: III

Rated cross-section: 4mm<sup>2</sup>

Rated current (as fuse-disconnect terminal): 10A

Rated impulse voltage: 6kV

Rated voltage (determined by the illuminated display and fuse being used): 500V

---

### Connection data

---

Connection position: Lateral

Connection principle: Screw connection

Connections: 2 / extraction lever

Number of levels: 1

Number of terminals per level: 2

Screw head: Slotted

Screw threading: M 3

Stripping length: 9mm

Tightening torque, max.: 1Nm

Tightening torque, min.: 0.5Nm

Wire cross-section AWG, max.: 10

Wire cross-section AWG, min.: 22

Wire cross-section single core (rigid)/stranded, max.: 6mm<sup>2</sup>

Wire cross-section single-core (rigid) / stranded, min.: 0.14mm<sup>2</sup>

Wire cross-section stranded with wire-end ferrules, max.: 4mm<sup>2</sup>

Wire cross-section stranded with wire-end ferrules, min.: 0.14mm<sup>2</sup>

Wire cross-section stranded, max.: 6mm<sup>2</sup>

Wire cross-section stranded, min.: 0.14mm<sup>2</sup>

---

### Further technical data

---

Cross-current via illuminated display: < 5mA

End plate required: ✓

Fuse size: 5 x 20 / 5 x 25 / 5 x 30mm

---

Gauge plug acc. to EN 60 947-1: A4

Mounting type: Mounting rail TS 35/7,5

Number of cross-connection channels: 2

Power loss in compound arrangement - only short-circuit protection, max.: 4 / 6,3W / A

Power loss in compound arrangement - overload and short-circuit protection, max.: 1,6 / 6,3W / A

Power loss in singular arrangement - only short-circuit protection, max.: 4 / 10W / A

Power loss in singular arrangement - overload and short-circuit protection, max.: 2,5 / 6,3W / A

Supply voltage (defect display), max.: 500

Supply voltage (defect display), min.: 500

Type of display element (defect display): LED

Type of voltage (defect display): AC/DC

Version of fuse cartridge: G fuse 5x20 / 5x25 / 5x30

Version of fuse holder: Swivelling

Voltage fuse: 250V

Voltage illuminated display: 500V

## Materials

Flammability class UL 94: V-0

Glass-fibre reinforced: ✓

Insulation housing: Polyamide 6.6

Working temperature, max.: 140°C

Working temperature, min.: -40°C

## Approvals

---

### KEMA KEUR approval

KEMA KEUR approval: EN 60947-7-3:2009

KEMA KEUR approval granted: ✓

KEMA fuse size: 5 x 20 / 5 x 25 / 5 x 30mm

KEMA power loss in compound arrangement - only short-circuit protection, max.: 4 / 6,3W / A

KEMA power loss in compound arrangement - overload and short-circuit protection, max.: 1,6 / 6,3W / A

KEMA power loss in singular arrangement - only short-circuit protection, max.: 4 / 10W / A

KEMA power loss in singular arrangement - overload and short-circuit protection, max.: 2,5 / 6,3W / A

KEMA rated current: 10A

KEMA rated impulse voltage: 6kV

KEMA rated voltage: 500V

KEMA stripping length: 9mm

---

KEMA torque, max.: 1Nm

KEMA torque, min.: 0.5Nm

KEMA voltage fuse, max.: 250V

KEMA wire cross-section single core (rigid), min.: 0.14mm<sup>2</sup>

KEMA wire cross-section single-core (rigid), max.: 6mm<sup>2</sup>

KEMA wire cross-section stranded, max.: 6mm<sup>2</sup>

KEMA wire cross-section stranded, min.: 0.14mm<sup>2</sup>

## **UL Recognized**

UL File Number: E95701

UL Recognized: 1

UL Usegroup B: rated current: 6,3A

UL Usegroup B: rated voltage: 600V

UL Usegroup C: rated current: 6,3A

UL Usegroup C: rated voltage: 600V

UL Usegroup D: rated current: 6,3A

UL Usegroup D: rated voltage: 600V

UL approval: UL 1059

UL factory wiring: ✓

UL field wiring: ✓

UL torque, max.: 8.85Lb In.

UL torque, min.: 4.42Lb In.

UL wire cross-section single-core (rigid) AWG, max.: 10

UL wire cross-section single-core (rigid) AWG, min.: 22

UL wire cross-section stranded AWG, max.: 10

UL wire cross-section stranded AWG, min.: 22

UL wire material: Cu

## **CSA approval**

CSA Usegroup C: rated current: 6,3A

CSA Usegroup C: rated voltage: 600V

CSA approval: C22.2 No 158

CSA approval granted: ✓

CSA stripping length: 9mm

CSA torque, max.: 1Nm

CSA torque, min.: 5Nm

CSA wire cross-section AWG, max.: 10

CSA wire cross-section AWG, min.: 22

## CSAus approval

---

CSAus Usegroup C: rated current: 6,3A

CSAus Usegroup C: rated voltage: 600V

CSAus approval: UL 1059

CSAus approval granted: ✓

CSAus stripping length: 9mm

CSAus torque, max.: 1Nm

CSAus torque, min.: 0.5Nm

CSAus wire cross-section AWG, max.: 10

CSAus wire cross-section AWG, min.: 22

---

## Environment

---

### Environmental Product Compliance

---

EU-POP Conform: Yes

PROP 65 Conform: Yes

REACH Candidate Substance Note: No

REACH Conform: Yes

REACH Reference date: 2025-06-25

RoHS Conform: Yes

TSCA Conform: Yes

---

## Accessories

---

### Measurement pick-off terminal

---



**SMAG 4/2,5 BG**  
[17120.2](#)

---

### End plate

---



**SAP SSIK 4/6 BK**  
[17258.4](#)

---

## End stop

---

**SES 35 GN**

[17250.1](#)

---

## Insulation cap for cross-connector

---

**SQIK 2,5-10 BK**

[17200.4](#)

---

## Insulated cross-connector

---

**SQI 4/3 BK**

[17212.4](#)

---



**SQI 4/2 BK**

[17211.4](#)

---

**SQI 4/8 BK**

[17217.4](#)

---

**SQI 4/9 BK**

[17218.4](#)

---

**SQI 4/10 BK**

[17219.4](#)

---

**SQI 4/5 BK**

[17214.4](#)

---

**SQI 4/6 BK**

[17215.4](#)

---

**SQI 4/4 BK**

[17213.4](#)

---

**SQI 4/30 BK**

[17220.4](#)

---

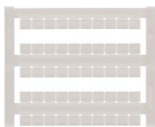
**SQI 4/7 BK**

[17216.4](#)

---

## Quick marking

---



**PMC SB 6/50 WH**

4702.7

---

## Connecting piece

---



**VBS 2/10 OG**

2873.3

---



**VBS 3/10 OG**

2874.3

---

## Screwdriver

---



**SDB 0,6x3,5**

1086.0

---