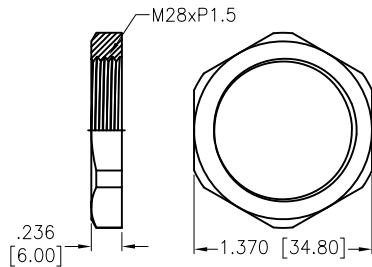


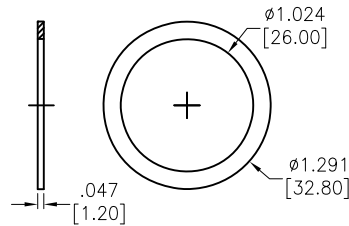
APPROVED: \_\_\_\_\_  
 DATE: \_\_\_\_\_ TITLE: \_\_\_\_\_

Rev	AWO #	Description	Date	Appr
-		RELEASED	11/1/22	
A		UPDATE SPEC.	11/30/22	JJ/RC

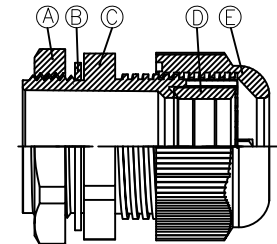
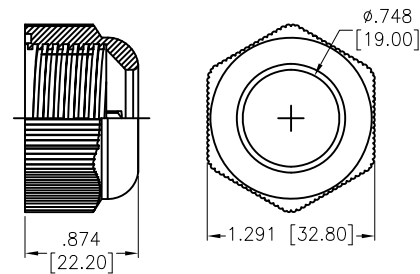
Ⓐ Lock Nut



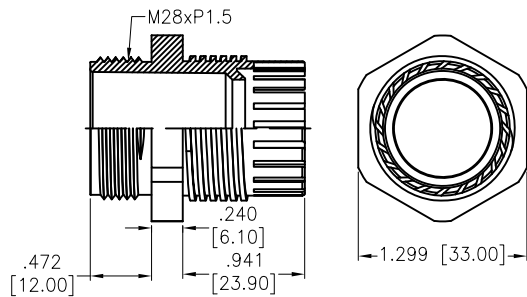
Ⓑ Washer



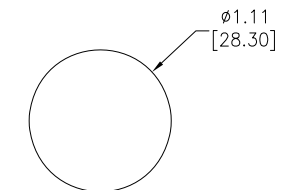
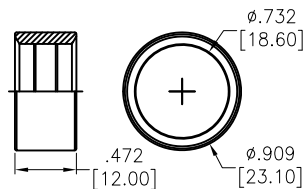
Ⓔ Sealing Nut



Ⓒ Body



Ⓓ Seal



RECOMMENDED  
 PANEL CUT-OUT  
 (.173 [4.4] MAX PANEL THICKNESS)

**SPECIFICATIONS:**

Material:  
 Lock Nut: PA66, rated UL 94V-2  
 Body: PA66, rated UL 94V-2  
 Sealing Nut: PA66, rated UL 94V-2  
 Washer: Nitrile Butylene  
 Seal: Nitrile Butylene  
 Mechanical:  
 Cable Range (O.D.): 13-18mm  
 Thread O.D. L2: 28mm  
 Thread Length L2: 12mm  
 Spanner Size A&E: 35/33mm  
 Nut Torque: 3Nm Max.  
 Temperature Rating:  
 -40°C to +100°C  
 Environmental:  
 Waterproof: IP68  
 Lead free, RoHS compliant.



UNLESS OTHERWISE SPECIFIED ALL DIMENSIONS ARE INCHES [MM]. TOLERANCES: EXCEPT AS NOTED			
INCHES	HOLES		
.X ± .10	ØX ± .10		
.XX ± .020	ØXX ± .015		
.XXX ± .015	ØXXX ± .010		



909 Rahway Avenue,  
 Union, NJ 07083  
 Phone: 908-687-5000  
 Fax: 908-687-5710

DRAWN	WX	11/1/22
CHECKED	RC	11/1/22
APPROVED		
THIS DRAWING CONTAINS INFORMATION THAT IS PROPRIETARY AND SHOULD NOT BE USED WITHOUT PRIOR WRITTEN PERMISSION FROM ADAM TECH		

TITLE			REV.	
WATERPROOF CONNECTOR, M28, 1 HOLE, CABLE GLAND, WATERPROOF: IP68			A	
SIZE	PART NO.			
X	CG-P-M28-1.5			
REF:	S00211C	SCALE:	NTS	SHEET 1 OF 1