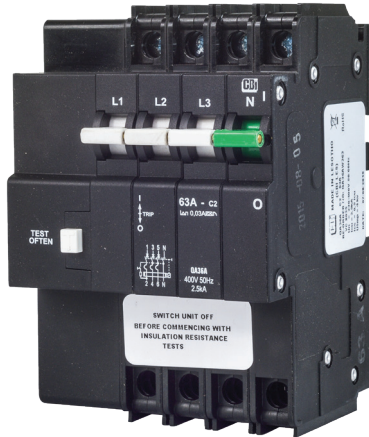


QA36 - Series Earth Leakages



QA36A
Dual Mount



QA36C
Dual Mount

Features

- Hydraulic-magnetic technology
- 100% rating capability, independent of ambient temperature
- VC 8035 compliant
- Ratings 6 to 63 A
- Earth Leakage sensitivity 30 mA
- Three pole plus switched neutral earth leakage protection
- Precision tripping characteristics
- Trip indication with mid-trip position
- Can be switched on immediately after tripping
- Suitable to use for electrical isolation
- Shell designed for easier installation onto busbar
- 57 mm front escutcheon

Applications

- Residential and commercial applications requiring high sensitivity earth leakage protection from electrical shock and fire hazards
- Telecom / datacom equipment
- Lighting control
- UPS equipment
- Alternative energy equipment
- Mobile power generation equipment
- Railway signalling equipment
- Industrial equipment

Approvals

VC 8035

Technical Data

Product Type	QA36A	QA36C
Approvals	VC 8035	
Number of Poles	3 + N	3 + N
Standard Ampere Ratings	6 A to 63 A	63 A
Sensitivity	30 mA	30 mA
Equipment Type Rated Voltage	400 Vac	400 Vac
Rated Interrupting / Withstand Capacity	2.5 kA	-
	-	2.5 kA
Time Delay Curves	2	-
Operating Temperature Range	-40 °C to +85 °C	
Mounting Options	Dual mounting	

Earth Leakage	Wire Size mm ² (IEC)	Torque (IEC)	Comments
1+N	0.75 - 35 mm ²	2.5 Nm	Pozidriv #2 Combi head

Hydraulic-Magnetic Circuit Breakers 100% rated, unaffected by ambient temperature

QA36 - Series Earth Leakages

Long Code

Example Code: Q-A-36-A--DM-2-63A-30mA-240V----

Group	1	2	3	4	5	6	7	8	9	10
Requirement	Q Frame	Type F	1 pole + N	Overload	No Auxiliary or additional pole	Dual Mount	Medium delay curve 2	Current Rating 63 A	Sensitivity 30 mA	Voltage 240 Vac
Long Code	Q	A	36	A	-	DM	2	63A	30mA	240V

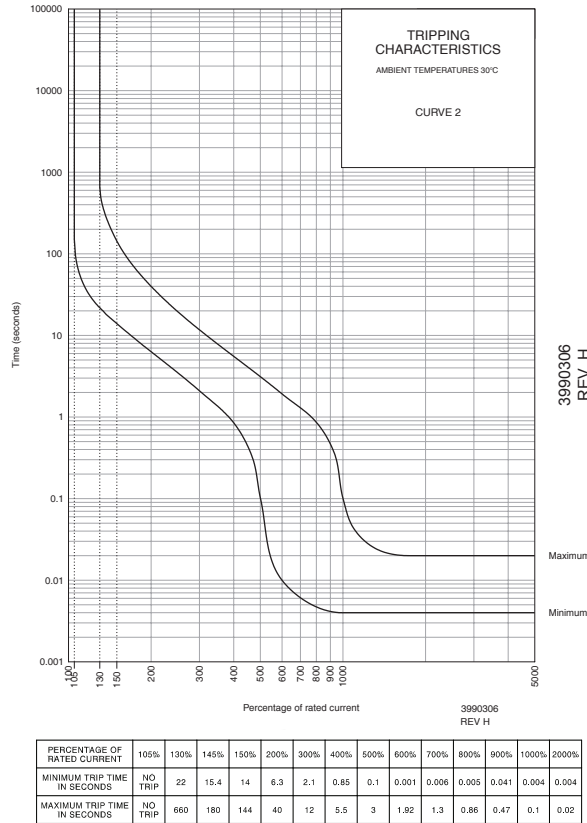
Ordering Information

Group 1: Frame Type	Code	Description	Comments	
	Q	36 mm wide Earth Leakage		
Group 2: Product Type	Code	Description	Comments	
	A	240 Vac	2.5 kA (VC 8035)	
Group 3: No of Poles	Code	Description	Comments	
	36	Three pole plus switched neutral (3+N)	QA36	
Group 4: E-L Type	Code	Description	Comments	
	A	Overload	White and green handle	
	C	Switch Disconnecter	Green handle	
Group 5: Auxiliary / Additional Pole	Code	Description	Comments	
	-	Not applicable	Use this code if no Auxiliary used	
Group 6: Mounting	Code	Description	Comments	
	DM	Dual (DIN + CBI Mini rail) mount	Dual Mount supplied in black body only - 57 mm Escutcheon	
Group 7: Time Delays	Code	Description	Instantaneous Trip Point (x In)	Comments
	C	Medium time delay HRC 113%	5 – 10	White handle
Group 8: Current Ratings	Code / Description		Comments	
	6, 10, 15, 20, 25, 30, 32, 40, 50, 60, 63 A		QA36A Ratings available vary depending on certification * Other ratings are available as special orders. Check availability.	
	40, 63 A		QA36A	
Group 9: Sensitivity	Code	Description	Comments	
	30 mA	30mA	Standard	
Group 10: Voltage	Code	Description	Comments	
	240 V	240 Vac		

For options not listed, please contact CBI for assistance

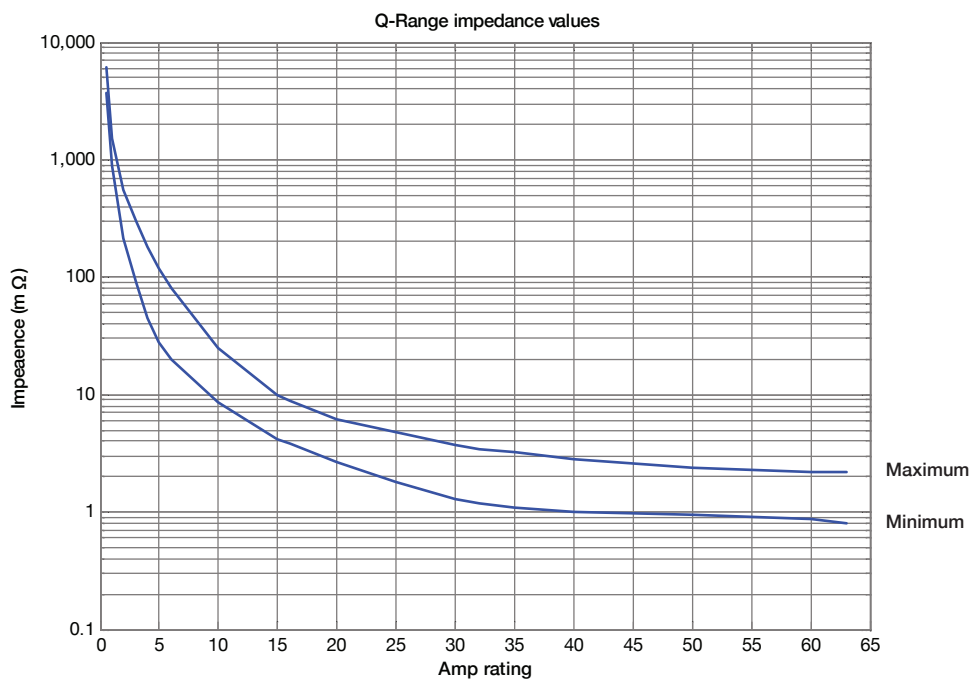
QA36 - Series Earth Leakages

Time Delay Curves



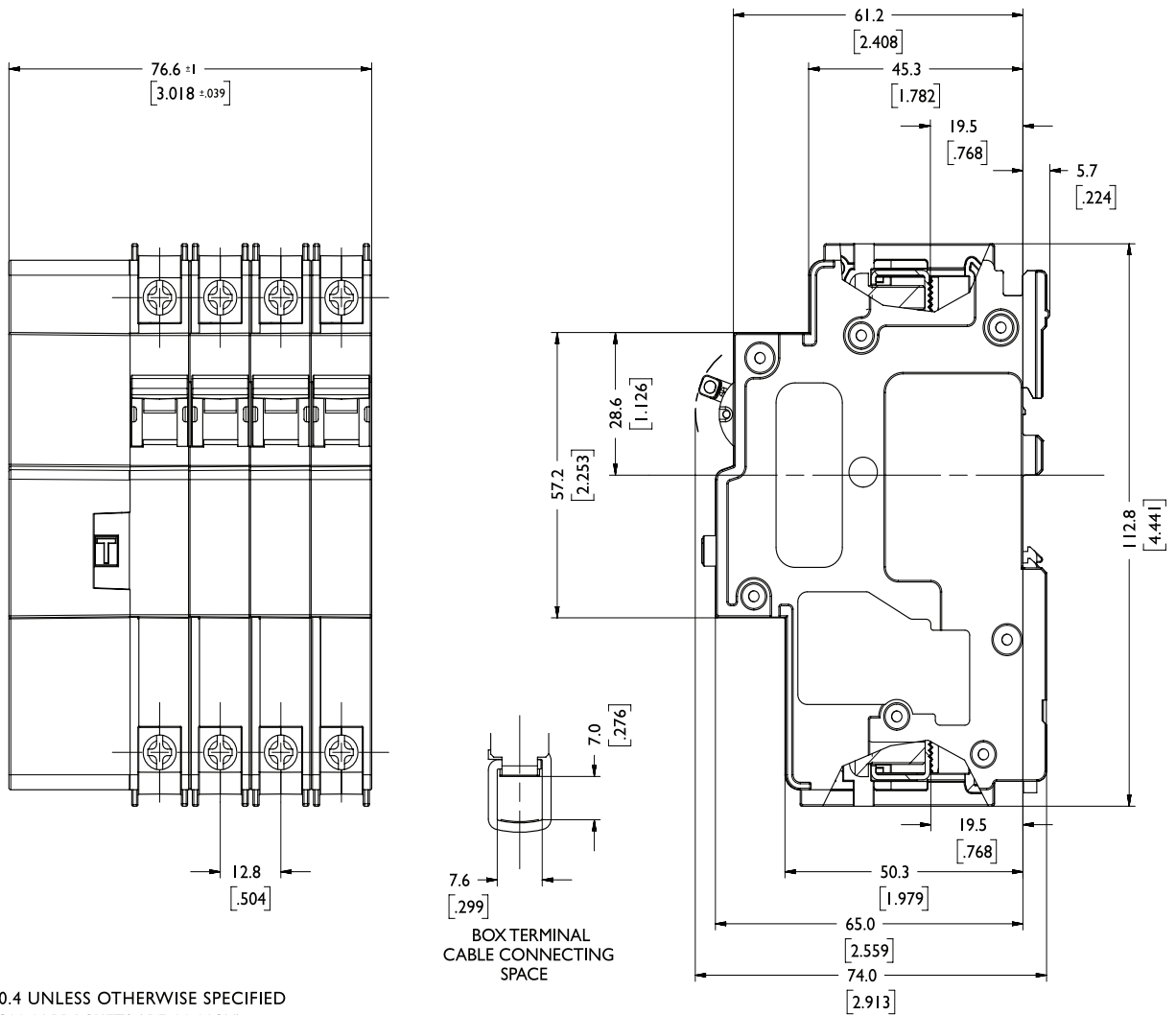
* The published time delay curves are generated at 30°C ambient temperature with the circuit breaker mounted in the up-right position. The “must hold”, “must trip” and “instantaneous trip” current values are not affected by temperature, although delay time for the other operating current values may have to be adjusted using the temperature compensation curve which is available on request.

Internal Impedance vs Current Rating



QA36 - Series Earth Leakages

Outline Dimensions: Dual Mount



TOLERANCE ±0.4 UNLESS OTHERWISE SPECIFIED
(DIMENSION IN BRACKETS ARE IN INCH)

Please review our Customer Terms and Conditions on www.cbi-lowvoltage.co.za

All rights reserved. Unless otherwise indicated, all materials on these pages are copyrighted by CBI (Pty) Ltd. No part of these pages, either text or image may be used for any purpose other than personal use. Therefore, reproduction, modification, storage in a retrieval system or retransmission, in any form or by any means, electronic, mechanical or otherwise, for reasons other than personal use, is strictly prohibited without prior written permission. CBI (Pty) Ltd reserves the right to alter any details of this document without notice and while every effort is made to ensure the accuracy of the content, no warranty is given as to the accuracy of this document and no responsibility will be accepted for error or misinterpretation and any resulting loss.

AUSTRALIA

CBI-electric: Australia
27 Wedgewood Rd, Hallam
Victoria 3803 Australia
Tel: +61 3 8752 9300
Fax: +61 3 9796 5407
Email: sales@cbi-electric.com.au
Website: www.cbi-electric.com.au

SOUTH AFRICA

CBI-electric: low voltage
Tripswitch Drive Elandsfontein
Gauteng South Africa
Tel: +27 11 928 2000
Fax: +27 11 392 2354
Email: cbi@cbi-electric.com
internationalsales@cbi-electric.com
Website: www.cbi-lowvoltage.co.za

USA

CBI-electric: North America
35 E. Uwchlan Ave Suite 328
Exton PA 19341 USA
Tel: +1 610 524 9949
Fax: +1 610 524 9945
E-mail: info@cbibreakers.com
Website: www.cbibreakers.com