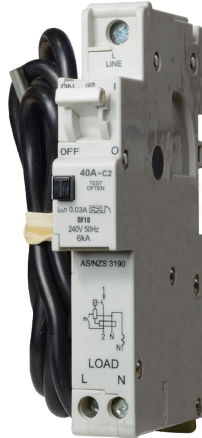


QF10 - Series Earth Leakages

The QF10 is an Earth Leakage Device with overload protection (RCBO) in a single 18 mm wide unit. It has an additional 1000 mm long neutral cable and fits on DIN and CBI mini rail.



QF10
Dual (DIN & CBI Mini Rail) mount

Features

- Hydraulic-magnetic technology
- 100% rating capability, independent of ambient temperature
- AS/NZS 3111 and AS/NZS 3190 compliant
- Ratings 6 A to 40 A
- Earth Leakage sensitivity 30 mA
- Single pole with unswitched neutral
- Supplied with a neutral cable
- Compact 18 mm width
- Precision tripping characteristics
- Trip indication with mid-trip position
- Can be switched on immediately after tripping
- Design permits easier installation onto busbar (single line terminal with neutral cable)
- 45 mm front escutcheon

Applications

- Residential and commercial applications requiring high sensitivity earth leakage protection from electrical shock and fire hazards
- Telecom / datacom equipment
- Lighting control
- UPS equipment
- Alternative energy equipment
- Mobile power generation equipment
- Railway signalling and infrastructure

Approvals



Hydraulic-Magnetic Circuit Breakers 100% rated, unaffected by ambient temperature

QF10 - Series Earth Leakages

Technical Data

Product Type	QF10
Approvals	AS/NZS 3111, AS/NZS 3190
Number of Poles	(1+N) in 18 mm width
Standard Ampere Ratings	6, 10, 16, 20, 25, 32, 40 A
Sensitivity	30 mA, Type A
Rated Voltage	240 V
Rated Interrupting	6 kA

Product Type	QF10
Ambient Temperature Range	-40 °C to +85 °C
Mounting Options	Dual (DIN & CBI Mini rail)
Time Delay Curves	2, 9
Endurance	1500 electrical operations (AS/NZS 3111, AS/NZS 3190)
Dielectric Strength	1480 V (single pole), 50 Hz for one minute after testing
Weight	240 g per pole (unpacked)
Altitude	Certification tests done at altitude ≈ 2000 metres.
Shock	16 G (IEC 600068-2-27)
Vibration	1 G (IEC 600068-2-27) (sinusoidal wave)
Flammability	I3 - Ignition does not persist at 850 °C after glow wire is withdrawn with an oxygen index of ≥ 28
Toxicity	F1 - Smoke index of ≤ 20 which determines the fume class
Pollution Degree	PD2 - Normally only non-conductive pollution occurs. Temporary conductivity caused by condensation is to be expected.

Terminals	Wire Size mm ² (IEC)	Torque (IEC)	Comments
Line (L)	0.75 - 25 mm ²	2.5 Nm	Pozidriv #2 Combi head
Load (L+N)	0.75 - 16 mm ²	1.2 Nm	Pozidriv #2 Combi head
Line (N)	4 mm ² (6 A - 32 A) 6 mm ² (40 A)	N/A	Fly leads

QF10 - Series Earth Leakages

Long Code

Example Code: Q-F-10-A---DM-2-40A-30mA-240V

Group	1	2	3	4	5	6	7	8	9	10
Requirement	Q Frame	Type F	1 pole + N	Overload	No auxiliary switch	Dual Mount	Medium delay curve 2	Current rating 40 A	Sensitivity 30 mA	Voltage 240 Vac
Long Code	Q	F	10	A	-	DM	2	40A	30mA	240V

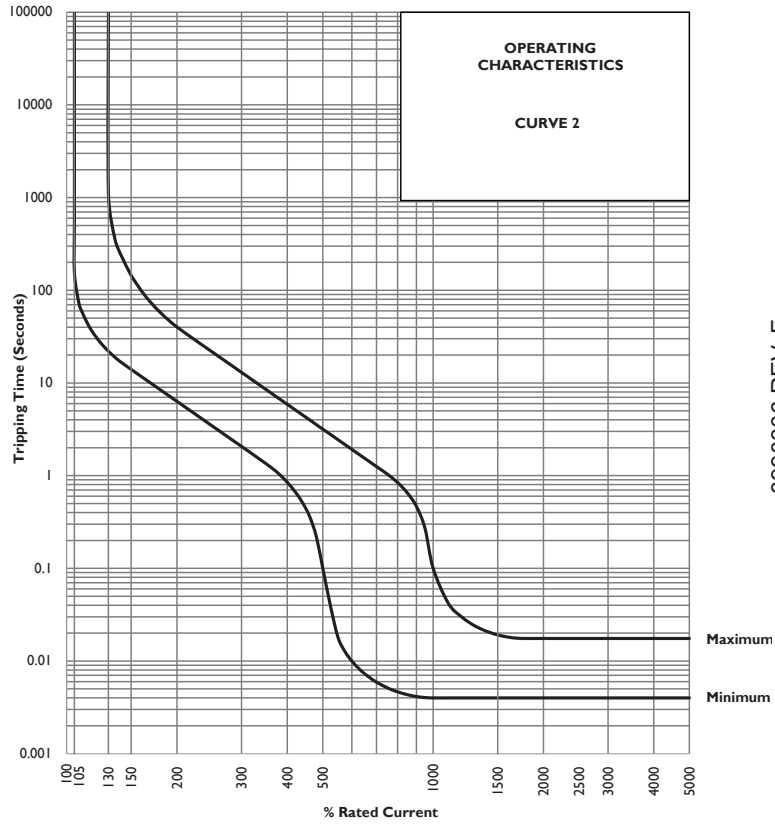
Ordering Information

Group 1: Frame Type	Code	Description	Comments
	Q	18 mm wide earth leakage	
Group 2: Product Type	Code	Description	Comments
	F	Unswitched, 240 Vac, 6 kA	
Group 3: No of Poles	Code	Description	Comments
	10	Single pole plus unswitched neutral (1+N) in 18 mm	QF10
Group 4: E-L Type	Code	Description	Comments
	A	Overload protection	
Group 5: Auxiliary / Additional Pole	Code	Description	Comments
	-	Not applicable	
Group 6: Mounting	Code	Description	Comments
	D	Dual Mount	Dual Mount supplied in grey body only - 45 mm Escutcheon
Group 7: Time Delays	Code	Description	
	2	Medium time delay	
	9	Long time delay	
Group 8: Current Ratings	Code / Description		Comments
	6, 10, 16, 20, 25, 32, 40 A		QF10
Group 9: Sensitivity	Code	Description	Comments
	30mA	30 mA	Standard
Group 10: Voltage	Code	Description	Comments
	240 V	240 Vac	

For options not listed, please contact CBI

QF10 - Series Earth Leakages

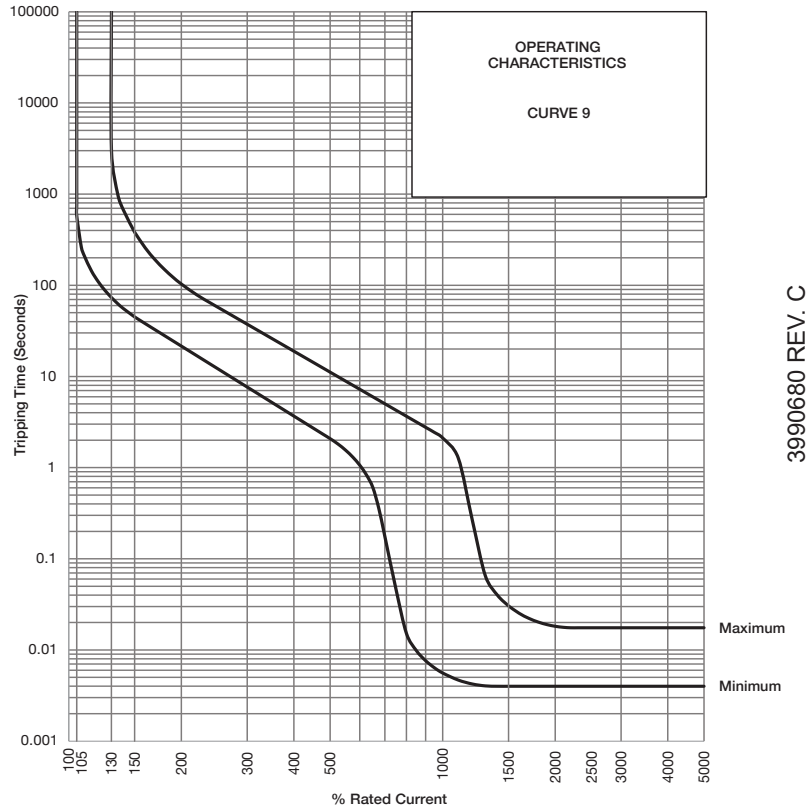
Time Delay Curve



3990306 REV. F

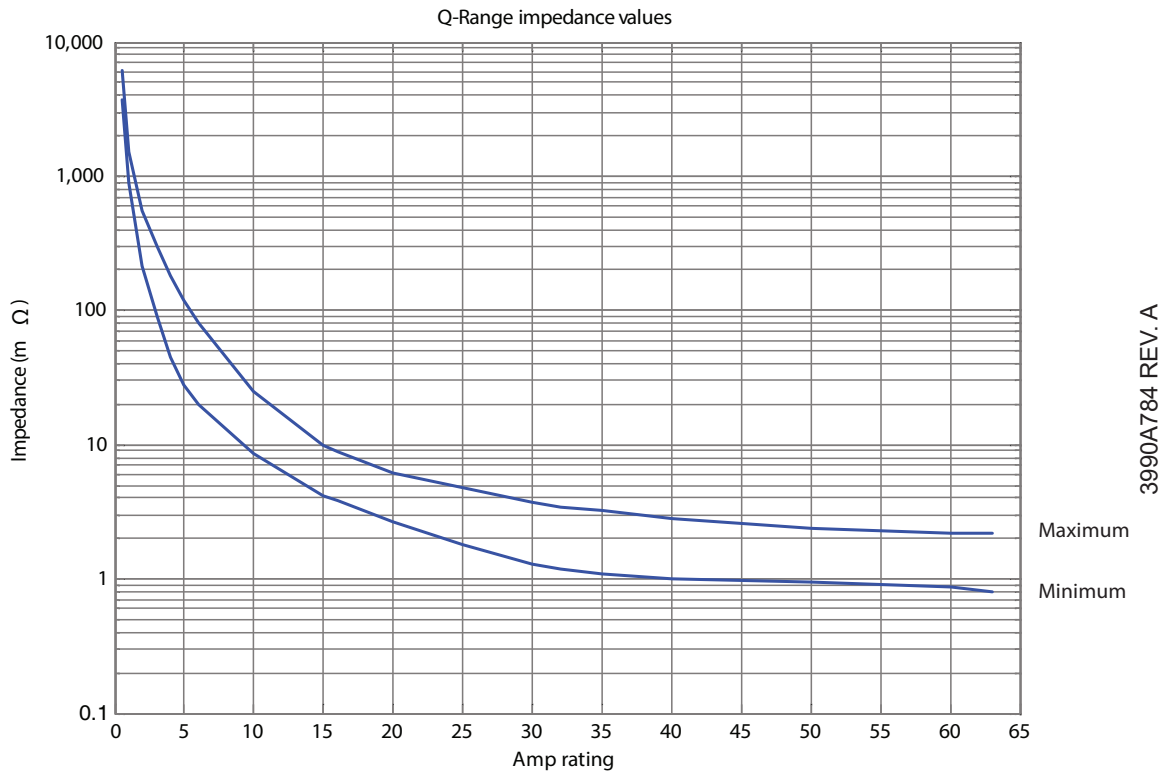
QF10 - Series Earth Leakages

Time Delay Curve



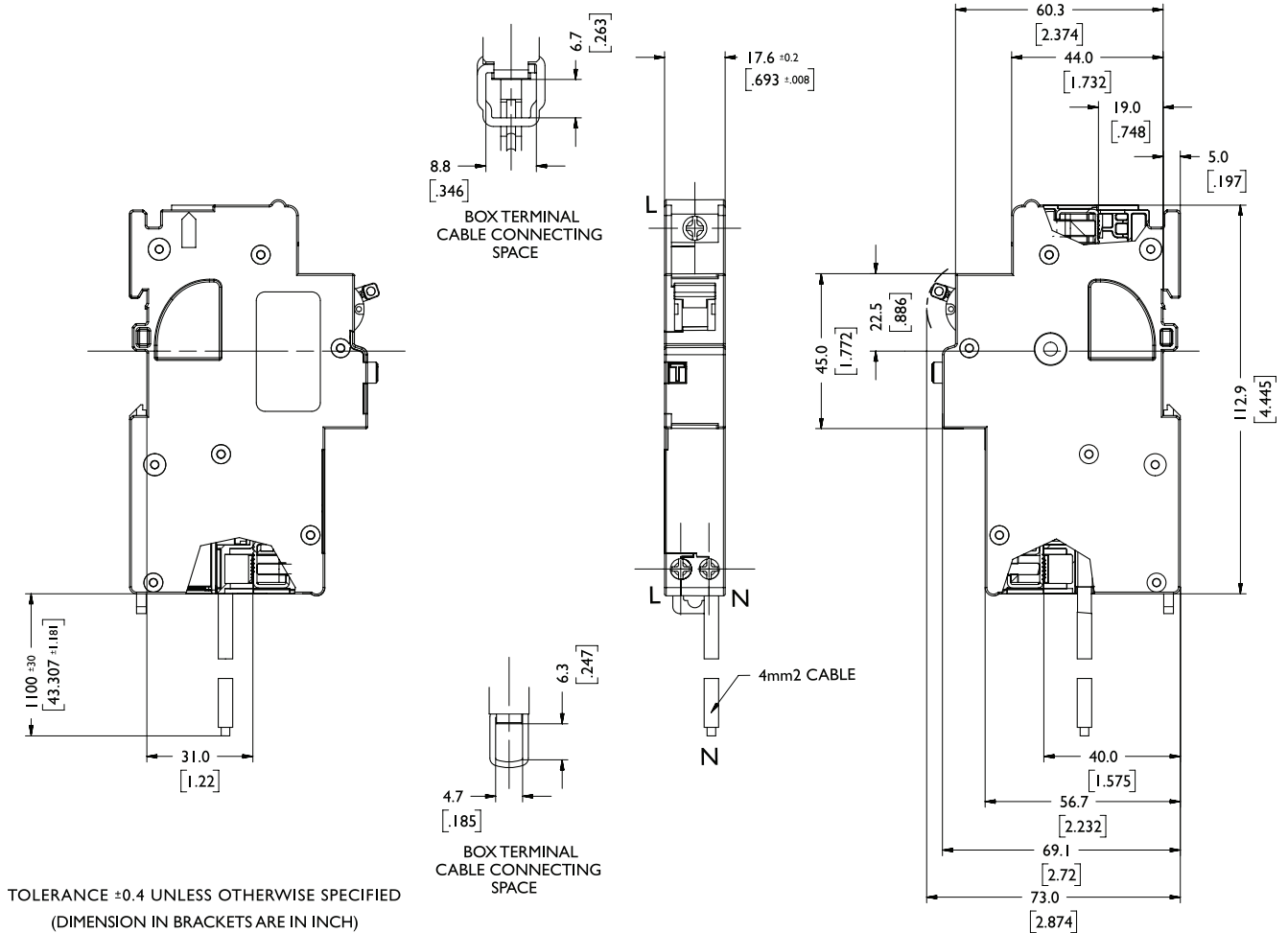
* The published time delay curves are generated at 30°C ambient temperature with the circuit breaker mounted in the up-right position. The “must hold”, “must trip” and “instantaneous trip” current values are not affected by temperature, although delay time for the other operating current values may have to be adjusted using the temperature compensation curve which is available on request.

Internal Impedance vs Current Rating



QF10 - Series Earth Leakages

Outline Dimensions: Rail Mount



Please review our Customer Terms and Conditions on www.cbi-lowvoltage.co.za

All rights reserved. Unless otherwise indicated, all materials on these pages are copyrighted by CBI (Pty) Ltd. No part of these pages, either text or image may be used for any purpose other than personal use. Therefore, reproduction, modification, storage in a retrieval system or retransmission, in any form or by any means, electronic, mechanical or otherwise, for reasons other than personal use, is strictly prohibited without prior written permission. CBI (Pty) Ltd reserves the right to alter any details of this document without notice and while every effort is made to ensure the accuracy of the content, no warranty is given as to accuracy of this document and no responsibility will be accepted for error or misinterpretation and any resulting loss.

AUSTRALIA

CBI-electric: Australia
27 Wedgewood Rd, Hallam
Victoria 3803 Australia
Tel: +61 3 8752 9300
Fax: +61 3 9796 5407
Email: sales@cbi-electric.com.au
Website: www.cbi-electric.com.au

SOUTH AFRICA

CBI-electric: low voltage
Tripswitch Drive Elandsfontein
Gauteng South Africa
Tel: +27 11 928 2000
Fax: +27 11 392 2354
Email: cbi@cbi-electric.com
internationalsales@cbi-electric.com
Website: www.cbi-lowvoltage.co.za

USA

CBI-electric: North America
35 E. Uwchlan Ave Suite 328
Exton PA 19341 USA
Tel: +1 610 524 9949
Fax: +1 610 524 9945
E-mail: info@cbibreakers.com
Website: www.cbibreakers.com