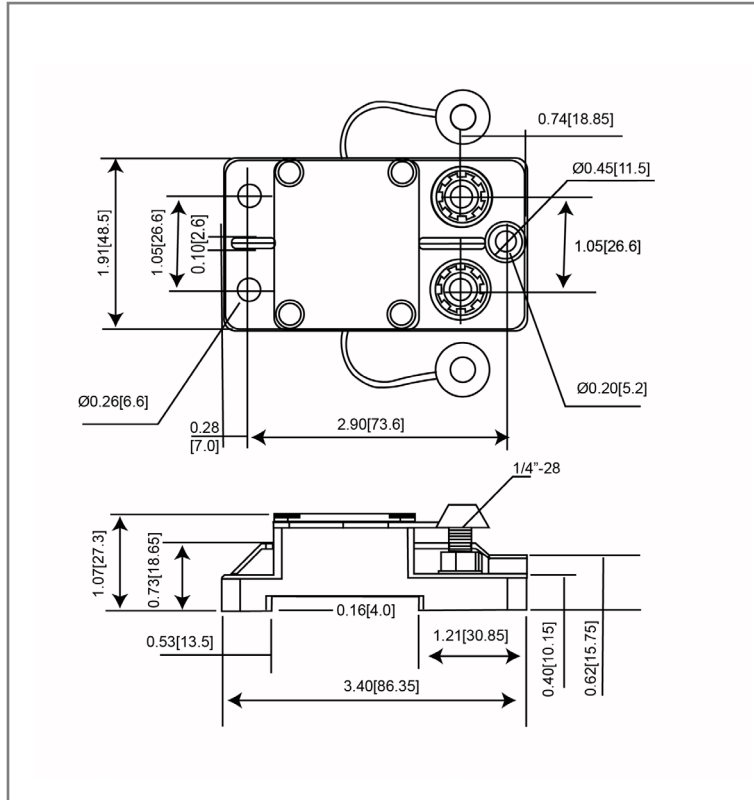


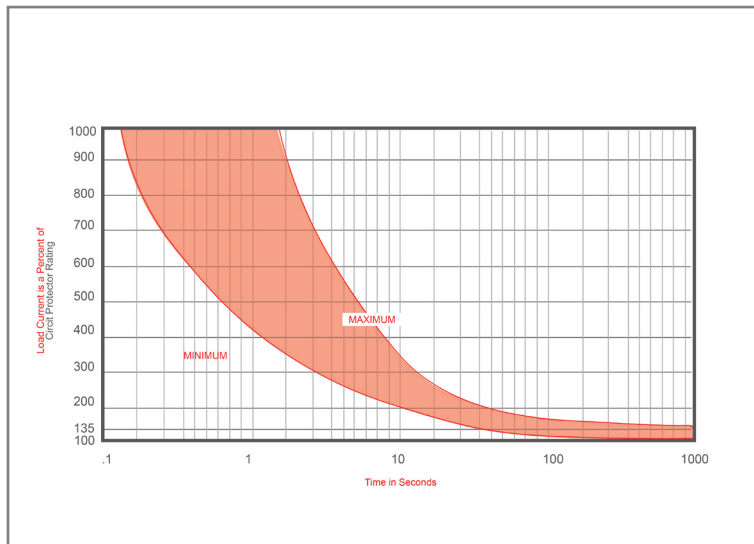
Mechanical Dimensions: Inches [mm]



Part Numbers Information

Optifuse P/N	Current
451025	25A
451030	30A
451040	40A
451050	50A
451060	60A
451070	70A
451080	80A
451090	90A
451100	100A
451120	120A
451135	135A
451140	140A
451150	150A
451175	175A
451200	200A
451250	250A

Time vs. Percent of Rated Current



% of Rated Current	Min Hold Time	Max Hold Time
100%	No Trip (≥ 30 Minutes)	
135%	50s	30m
200%	12s	45s
300%	3.5s	15s

Trip time: Ambient temperature 25°C ± 3°C

Electrical Specifications

Voltage Rating	42VDC (25A-200A), 14VDC (250A)
Reset Type	Type I - Auto Reset
Interrupting Rating	3000A @ 30VDC (25A-150A), 1500A @ 30VDC (175A-250A)
Operation Temperature	-25° F ~ 180° F
Compliances	SAE J1625, SAE J1171, ABYC-E11, UL1077

Material Specifications

In-Line Heavy Duty High Amp - Waterproof Circuit Breaker	
Body Material	Thermoset Plastic (UL94V-0)
Terminals Configuration	1/4"-28 Stud
Mounting Type	Surface Mount
IP67	

Rev **Date of issue** **Revision Notes**

Designed **Approved**

A	06-29-2020	Initial Drawing	RC	OF
---	------------	-----------------	----	----