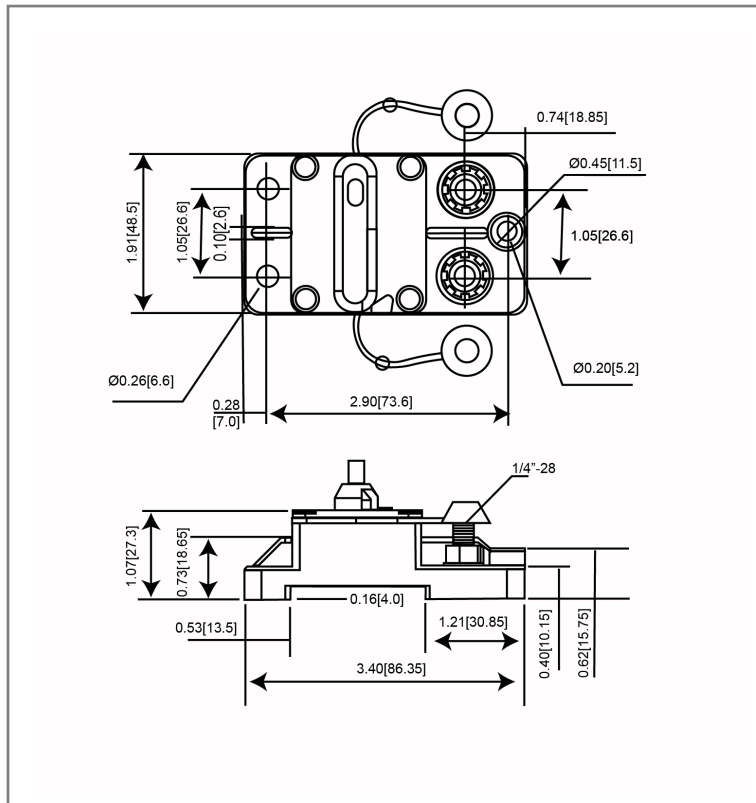


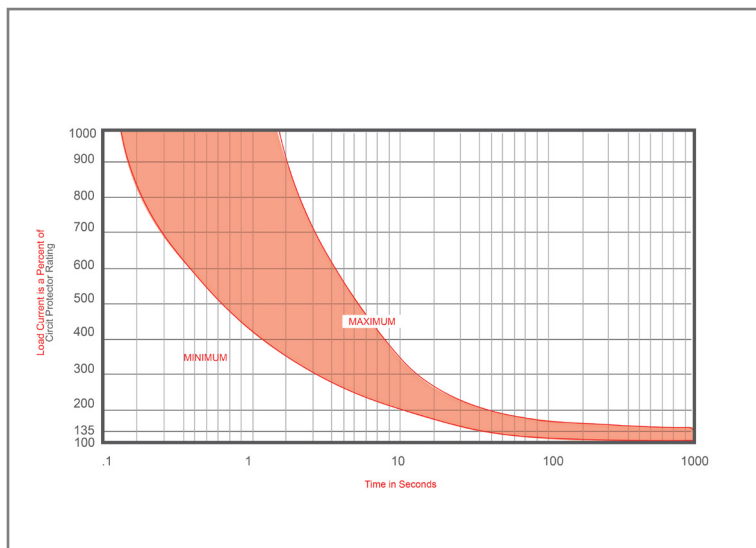
## Mechanical Dimensions: Inches [mm]



## Part Numbers Information

Optifuse P/N	Current
453025	25A
453030	30A
453040	40A
453050	50A
453060	60A
453070	70A
453080	80A
453090	90A
453100	100A
453120	120A
453135	135A
453140	140A
453150	150A
453175	175A
453200	200A
453250	250A

## Time vs. Percent of Rated Current



% of Rated Current	Min Hold Time	Max Hold Time
100%	No Trip ( ≥ 30 Minutes)	
135%	50s	30m
200%	12s	45s
300%	3.5s	15s

Trip time: Ambient temperature 25°C ± 3°C

## Electrical Specifications

Voltage Rating	48VDC
Reset Type	Type III – Manual Reset
Interrupting Rating	3000A @ 30VDC (25A-150A), 1500A @ 30VDC (175A-250A)
Operation Temperature	-25° F ~ 180° F
Compliances	SAE J1625, SAE J1171, ABYC-E11, UL1077

## Material Specifications

In-Line Heavy Duty High Amp - Waterproof Circuit Breaker	
Body Material	Thermoset Plastic (UL94V-0)
Terminals Configuration	1/4"-28 Stud
Mounting Type	Surface Mount
IP67	



**Rev**    **Date of issue**    **Revision Notes**

**Designed**    **Approved**

A	06-29-2020	Initial Drawing	RC	OF
---	------------	-----------------	----	----