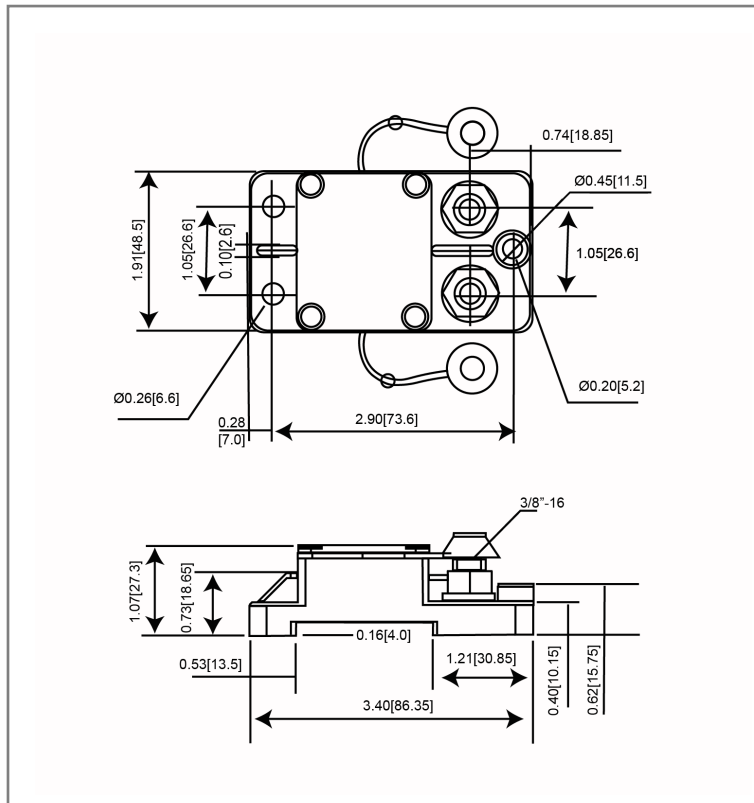


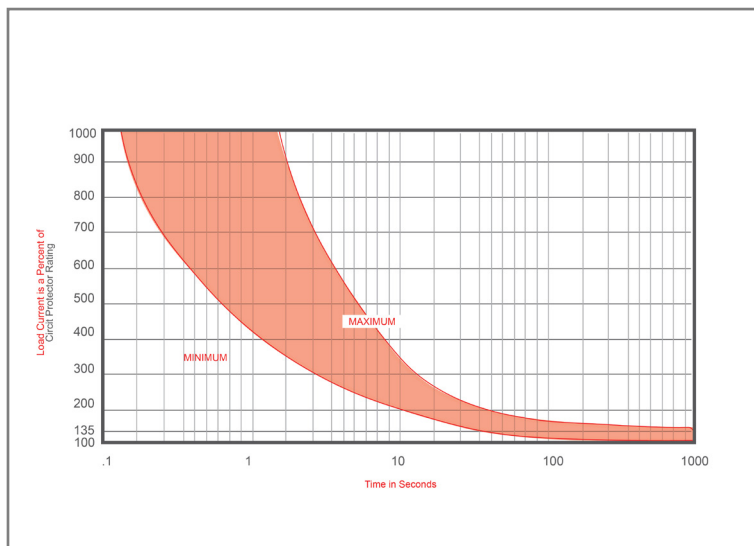
Mechanical Dimensions: Inches [mm]



Part Numbers Information

Optifuse P/N	Current
551025	25A
551030	30A
551040	40A
551050	50A
551060	60A
551070	70A
551080	80A
551090	90A
551100	100A
551120	120A
551135	135A
551140	140A
551150	150A
551175	175A
551200	200A
551250	250A
551300	300A

Time vs. Percent of Rated Current



% of Rated Current	Min Hold Time	Max Hold Time
100%	No Trip (≥ 30 Minutes)	
135%	50s	30m
200%	12s	45s
300%	3.5s	15s

Trip time: Ambient temperature 25°C ± 3°C

Electrical Specifications

Voltage Rating	42VDC (25A-200A), 14VDC (250A-300A)
Reset Type	Type I - Auto Reset
Interrupting Rating	3000A @ 30VDC (25A-150A), 1500A @ 30VDC (175A-300A)
Operation Temperature	-25° F ~ 180° F
Compliances	SAE J1625, SAE J1171, ABYC-E11, UL1077

Material Specifications

In-Line Heavy Duty High Amp - Waterproof Circuit Breaker	
Body Material	Thermoset Plastic (UL94V-0)
Terminals Configuration	3/8"-16 Stud
Mounting Type	Surface Mount
IP67	



Rev	Date of issue	Revision Notes	Designed	Approved
A	06-29-2020	Initial Drawing	RC	OF