

# 1 & 2 Pole Terminal Blocks

## HTB Series



### Specifications

#### Line and Load Connections

60 Amp Maximum rating

#### Unit Weight

##### 1P Terminal Block

0.076 lbs or 1.216 ounces or 34.47 grams

##### 2P Terminal Block

0.098 lbs or 1.57 ounces or 44.45 grams

#### Power Pole Terminations

Aluminum Lug and Quad .250" QC

#### Wire Size

#4-14 AWG

#### Recommended Tightening Torque

Aluminum Lug: 40 in. lbs

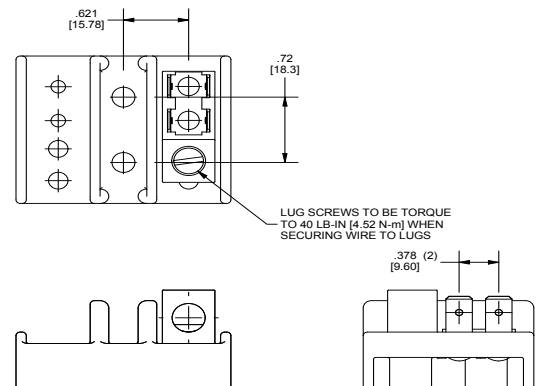
#### Quick Connects (optional)

Power terminals:

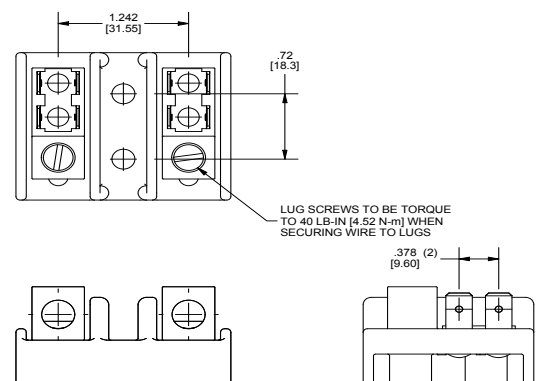
Quad .250" QC

#### Dimensions (inches [mm])

##### HTB 1P



##### HTB 2P



Molded base terminal blocks for use in commercial and industrial applications. Tested and listed in UL Standard 1059 and CSA C22.2 No. 158.

## Features

- Can be flush mounted
- Quick, safe, reliable, and economical circuit connections
- Has lug and QC termination options
- Tested, UL Listed and CSA certified

We can custom engineer a solution to meet any need. Just ask.

815.626.5170 | [HartlandControls.com](http://HartlandControls.com)