

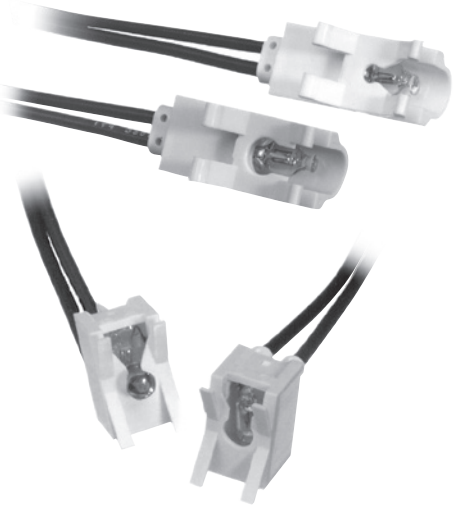
Series 10, 60

Features

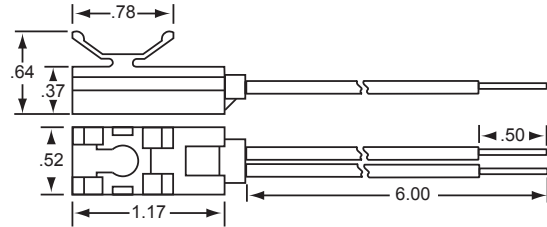
- Lens mounts from front, indicator from behind panel
- Incandescent and neon illumination
- 10 Series has wire leads only
- 60 Series available with wire leads or tab terminals

Specifications

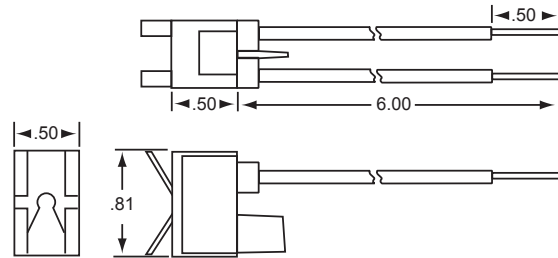
- Body Material: Nylon
- Lens Material: Polycarbonate
- Wire Gauge: Series 10 - 20 ga
Series 60 - 18 ga
- Wire Strip: 1/2"
- Panel Thickness: .030 - .780²
- Certifications: Contact Us



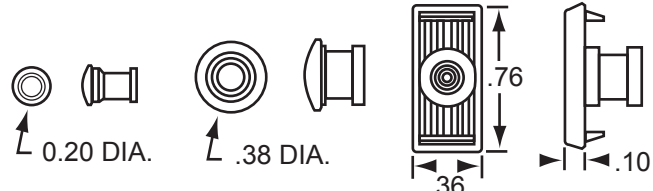
10 Series



60 Series

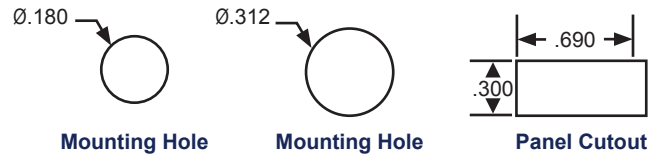


Series	Lamp		Termination		Base		Bezel		Lens				
XX	XX	-	X	-	X	-	X	-	XXX	X	0		
	Voltage	Type	Code	Style	Code	Color	Code	Finish	Code	Style	Code	Color	Code
10	6	INCAND	32	6" Wire	1	N/A	0	N/A	0	.200 Dia Rings	496	N/A	0
60	14	INCAND	35	.187 Tabs	3 ¹					.375 Dia Rings	266	Red	1
	28	INCAND	39	.250 Tabs	4 ¹					Rectangular Lines	515	Amber	2
	125	NEON	50	Special	X							Clear	3
	250	NEON	52									Green	4
												Blue	5



Lens 49 Lens 26 Lens 51

Lens 49 mounting hole .180" dia
 Lens 26 mounting hole .312" dia.
 Lens 51 mounting hole .690" x .300"



Mounting Hole Mounting Hole Panel Cutout

Additional Options Available:
 Contact sales@solico.com

1. Series 60 only

Rear Mount Indicators

Bold callouts are standard option