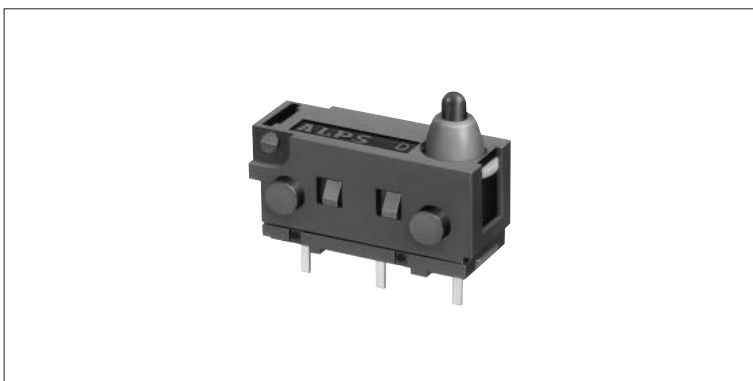


Water-proof Type Detector Switch

SPVQ4 Series

**2005
New**

The long 2.7 mm stroke and superb waterproof characteristics ensure a wide range of applications for in-car devices and mechanical operations under wet conditions.

Features

- The double-sided sliding contact structure of our original clip type ensures applications best suited for minute electrical current areas while assuring greater contact reliability.
- The long 2.7 mm stroke ensures superb usability.
- The water resistance conforms to IEC IP 67.
- Applications can be developed to variants including those with lead wires or with an actuator.
- Free from mechanical operating noises, thus ensuring superb silent operation.

Applications

- Detection of in-car mechanical drives (door operations, closer positions, and trunk/back door operations)
- Detection of mechanical drives in home electric appliances to be used in surrounding wet areas

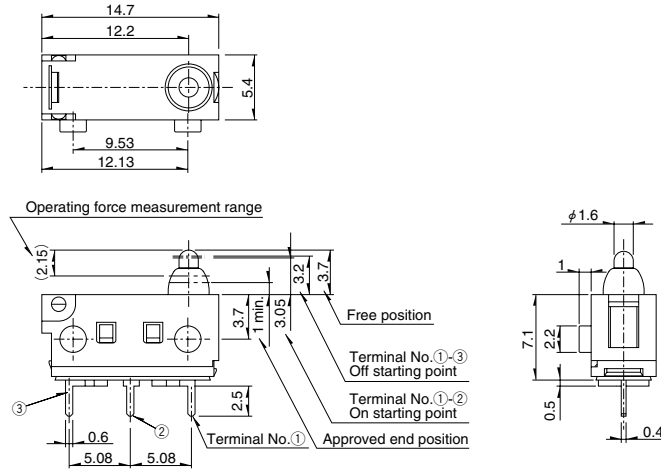
Typical Specifications

Items	Specifications	
Products No.	SPVQ440100	SPVQ440200
Ratings(max.)(Resistive load)	0.1A 12VDC	
Total travel	2.7mm	
Overrun travel	2mm	
Terminal style	For PC board	
Boss style	Left side	Right side
Operating force	1 N	
Operating temperature range	-40°C to +85°C	
Operating life with load	300,000 cycles	

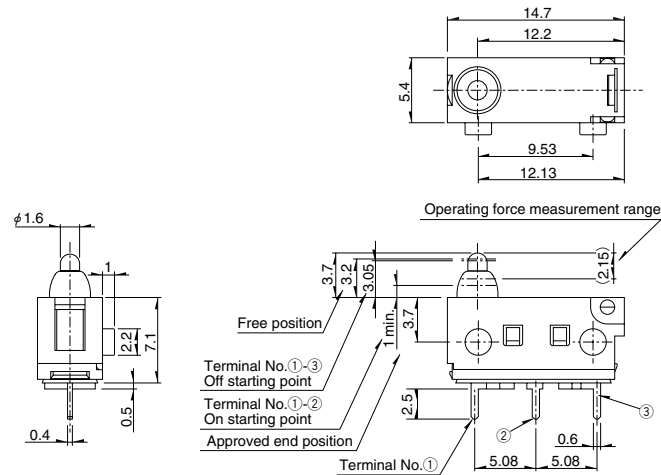
Dimensions

Unit:mm

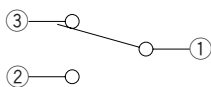
SPVQ440100 (Boss-left)



SPVQ440100 (Boss-right)



Circuit Diagram



CAUTION

1. This unit cannot be used in the water.
2. Unless specifically indicated otherwise, products in this catalog have been designed and manufactured for use in ordinary electronic equipment and devices, such as AV equipment, electric home appliances, office machines, and communications equipment. Equipment manufacturers are consequently advised that when these products are planned for equipment that requires a high degree of safety and reliability, especially those apparatuses like medical equipment, aviation and aircraft equipment, space equipment, and burglar alarm equipment, the manufacturers should assure equipment safety by providing protection circuits and redundant circuitry and should fully study the suitability of such products for the intended equipment.
3. Specification indicated in this catalog is outline only. When employing the product, use of an officially authorized specification for supply contract is recommended.
4. The external appearance, performances, and other properties of the product may be changed for improvement without prior notice.
5. Names for products and companies and titles of specifications indicated in this catalogue are mostly trademarks or registered trademarks of their respective owners.
6. Please contact us for any enquiries and queries on our products and their uses.
7. This catalog is valid till the end of December 2005.

ALPS ELECTRIC CO., LTD.

For more information please contact : Sales or Products Information Center.
 1-7, YUKIGAYA-OTSUKA-CHO, OTA-KU, TOKYO, JAPAN 145-8501 PHONE : (03) 5499 -8154 (DIRECT)
 Homepage <http://www.alps.co.jp/>

