

Two-way directional operation type detector switch with female connector terminal

SSCW Series



Easy solder-free, bi-directional (front/back) installation of switch contributes to usability and the environment.
Contributes to the high degree of freedom in set design

Applications

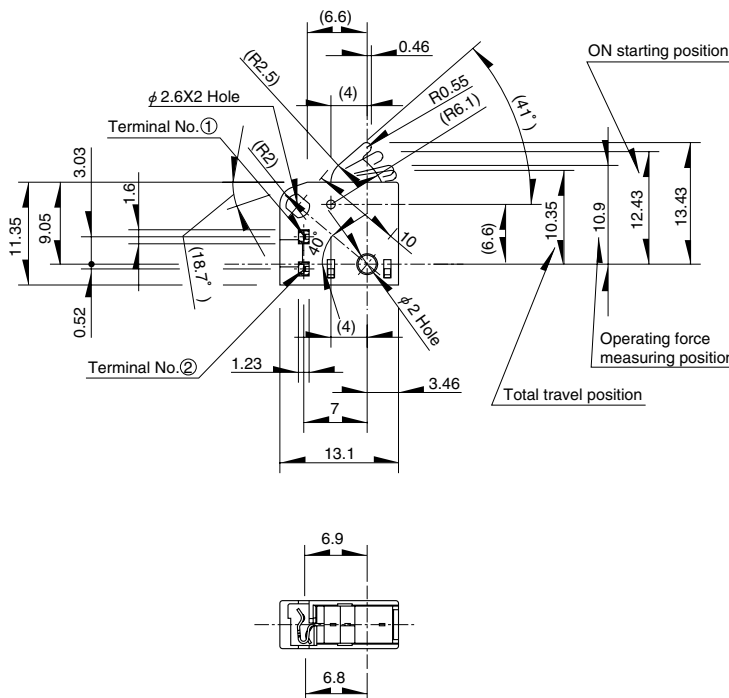
For detection of on-board door lock, on-board AV, printer, fax, etc.

Typical Specifications

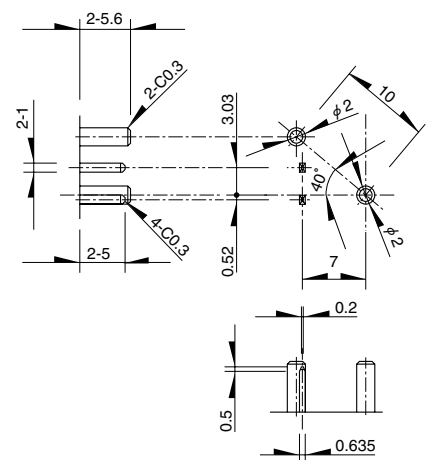
| Items | | Specifications |
|--|----------------|-----------------------------|
| Dimensions (W×D×H) | | 11.35×13.1×5.3mm |
| Rating (max.) (Resistive load) | | 0.1A 12V DC |
| Contact resistance(Initial performance/After lifetime) | | 500mΩ max./1Ω max. |
| Operating force | | 1N max. |
| Life | Without load | 100,000cycles |
| | Resistive load | 100,000cycles (0.1A 12V DC) |

Dimensions

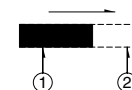
Unit:mm



Reference drawing for unit terminals



Circuit diagram



Operating Precautions

1. Unless specifically indicated otherwise, this product has been designed and manufactured for use in ordinary electronic equipment and devices, such as AV equipment, electric home appliances, office machines, and communications equipment. Equipment manufacturers are consequently advised that when these products are planned for equipment that requires a high degree of safety and reliability, especially those apparatuses like medical equipment, aviation and aircraft equipment, space equipment, and burglar alarm equipment, the manufacturers should assure equipment safety by providing protection circuits and redundant circuitry and should fully study the suitability of such products for the intended equipment.
2. Specification indicated in this catalog is outline only. When employing the product, use of an officially authorized specification for supply contract is recommended.
3. The external appearance, performances, and other properties of the product may be changed for improvement without prior notice.
4. Names for products and companies and titles of specifications indicated in this catalogue are mostly trademarks or registered trademarks of their respective owners.
5. Please contact us for any enquiries and queries on our products and their uses.
6. This catalog is valid till the end of December 2005.

Inquiries about Products

Products Information Center +81 (3) 5499-8154
Products Catalog Site <http://www3.alps.co.jp>

ALPS
ALPS ELECTRIC CO., LTD.
 1-7, Yukigaya-otsuka-cho, Ota-ku, Tokyo, 145-8501