

Low-profile Side-push™ TACT Switch

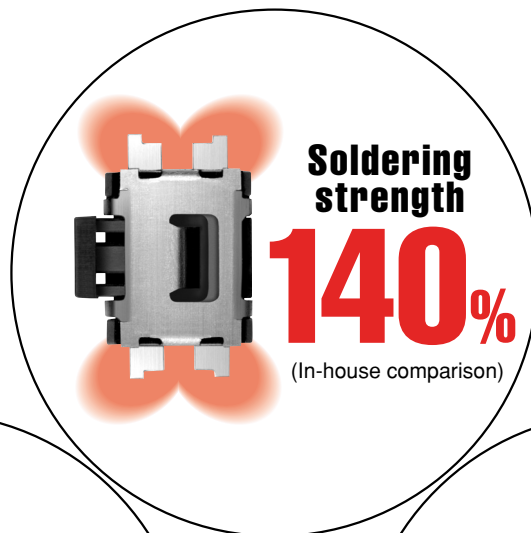
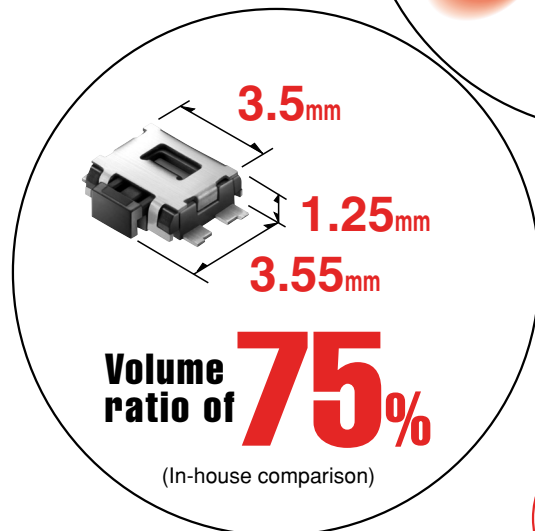
SKSC Series

ALPS®

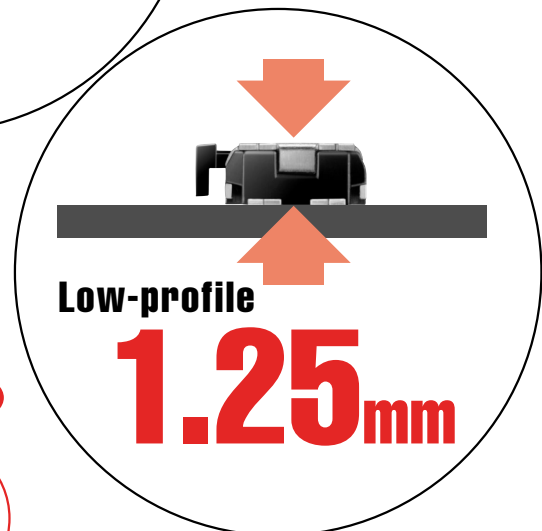
New
2006

Highly recommended side-push Strong

Small



Thin



The Side-push™ TACT Switch combines high soldering strength with a low-profile, compact design.

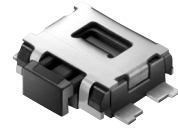
- Compact and low-profile design with outer dimensions of 3.5×3.55×1.25mm suitable for high-density mounting.
- The Side-push™ TACT Switch operates in direction in horizontal to the PC board.
- Contact sealing structure of high reliability.
- Available for reflow soldering.



We offer a new function•operation application for Personal Digital Assistants.

Low-profile Side-push™ TACT Switch

SKSC Series



Compact and low-profile design with improved soldering strength and contact sealing construction.

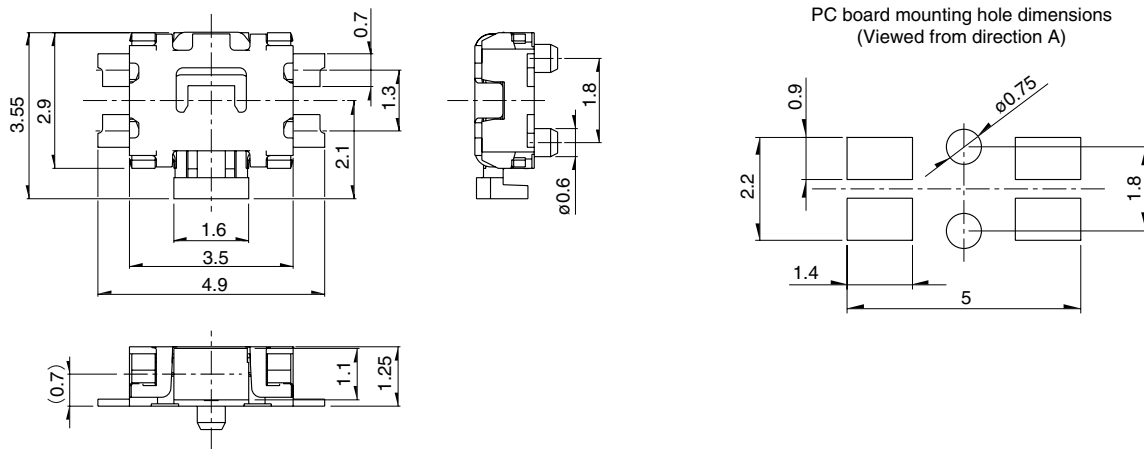
Applications

For the operating controls on mobile phones, CD players, MD players, MP3 players, and Personal Digital Assistants.

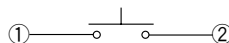
Typical Specifications

| Items | Specifications | | | |
|----------------------------|----------------|------------|------------|------------|
| | SKSCLAE010 | SKSCLBE010 | SKSCLCE010 | SKSCLDE010 |
| Products No. | SKSCLAE010 | SKSCLBE010 | SKSCLCE010 | SKSCLDE010 |
| Operating force | 2.2N | | 1.6N | |
| Operating direction | Horizontal | | | |
| Travel | 0.2mm | | | |
| Rating (max.) | 50mA 12V DC | | | |
| Operating life | 100,000 cycles | | | |
| Initial contact resistance | 100mΩ max. | | | |
| Guide bosses | Without | With | Without | With |

Dimensions



Circuit Diagram



Cautions for Use

1. Specification indicated in this catalog is outline only. When employing the product, use of an officially authorized specification for supply contract is recommended.
2. Unless specifically indicated otherwise, products in this catalog have been designed and manufactured for use in ordinary electronic equipment and devices, such as AV equipment, electric home appliances, office machines, and communications equipment. Equipment manufacturers are consequently advised that when these products are planned for equipment that requires a high degree of safety and reliability, especially those apparatuses like medical equipment, aviation and aircraft equipment, space equipment, and burglar alarm equipment, the manufacturers should assure equipment safety by providing protection circuits and redundant circuitry and should fully study the suitability of such products for the intended equipment.
3. The external appearance, performances, and other properties of the product may be changed for improvement without prior notice. The product introduced in this catalog may discontinue being produced without prior notice.
4. Side-push is trademarks of Alps Electric Co., Ltd.
5. All product names, company names and names of standards described in this catalog are trademarks or registered trademarks of their respective owners.
6. Please contact us for any enquiries and queries on our products and their uses.
7. This catalog is valid till the end of December 2006.

Inquiries about Products

Products Information Center +81 (3) 5499-8154
Products Catalog Site <http://www3.alps.co.jp>

ALPS
ALPS ELECTRIC CO., LTD.
1-7, Yukigaya-otsuka-cho, Ota-ku, Tokyo, 145-8501