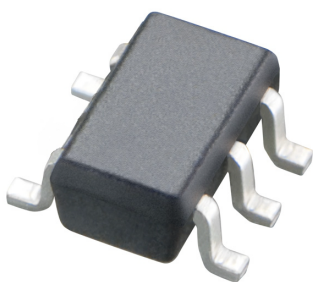


# High-precision Magnetic Sensor (Latch 2-phase output type)

**NEW  
2012**
**HGPRDT Series**

## High-precision motion detection with space-saving design



### Features

- Two-elements-in-one package enabling detection of rotation speed and direction in a single package
  - High robustness against gap variation achieved by adoption of high-sensitive elements, contributing to improved design flexibility
  - Built-in arithmetic circuit offering a selection of four detection modes ※
  - Low current consumption 3mA
- ※ Each model has a different product number. Please contact us for details.

### Applications

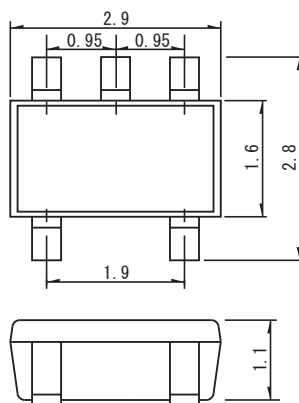
- Rotation detection for home appliances, industrial machinery and in-car components

### Typical Specifications

Output pulse from NS pole	2phase × 1
Supply Voltage	3 to 30V
Current consumption	3mA
Storage temperature range	−40 to +150°C
Operating Temperature	−40 to +140°C
Magnetic sensitivity Off->On	+1mT±0.7mT
Magnetic sensitivity On->Off	−1mT±0.7mT
Operate frequency	Continuous drive
Output signal	Open drain
Output current (Isink)	10mA

### Dimensions

Unit:mm



### Precautions when handling our products

1. For the export of products which are controlled items subject to foreign and domestic export laws and regulations, you must obtain approval and/or follow the formalities of such laws and regulations.
2. Products must not be used for military and/or antisocial purposes such as terrorism, and shall not be supplied to any party intending to use the products for such purposes.
3. Unless provided for otherwise, the products have been designed and manufactured for application in equipment and devices which are sold to end users in the market, including audio-visual (AV) equipment, electrical home appliances, office machines, information and communication equipment, and amusement equipment. The products are not intended for use in, and must not be used for, any application for nuclear equipment, driving equipment for aerospace or any other unauthorized use. With the exception of the abovementioned prohibited applications, please contact an Alps sales representative and/or evaluate the total system regarding applicability for applications involving high levels of safety and liability such as medical equipment, burglar alarm equipment, disaster prevention equipment and undersea equipment. Please also incorporate fail-safe design, protection and redundant circuitry, malfunction protection, and/or fire protection into the complete system to ensure safety and reliability of the total system.
4. Before using products which were not specifically designed for use in automotive applications, please contact an Alps sales representative.

### Cautions for using this catalog

1. The specifications herein are an overview of the specifications. Obtain official specifications before use.
2. The colors of the products in the catalog may slightly differ from those of the actual products.
3. The external appearance, functions and other specifications herein may be changed for improvement and other reasons without prior notice. Furthermore, the products herein may be discontinued without prior notice.
4. SENSORING is a trademark of ALPS ELECTRIC CO., LTD. in Japan.
5. All product names, company names and names of standards described in this catalog are trademarks or registered trademarks of their respective owners.
6. The contents of this catalog are according to Alps Electric as of January 2012.
7. This catalog is valid until the end of December 31, 2012.

### Inquiries about this product

Product Information Center

+81 (3) 5499-8154

Product Information URL

<http://www.alps.com/products/e/>
**ALPS ELECTRIC CO., LTD.**

1-7, Yukigaya-otsukamachi, Ota-ku, Tokyo, 145-8501, Japan