



DATE : April 7, 2008
FOR IMMEDIATE RELEASE

CIT Relay & Switch JS Series 12mm Square Illuminated Tactile Switch

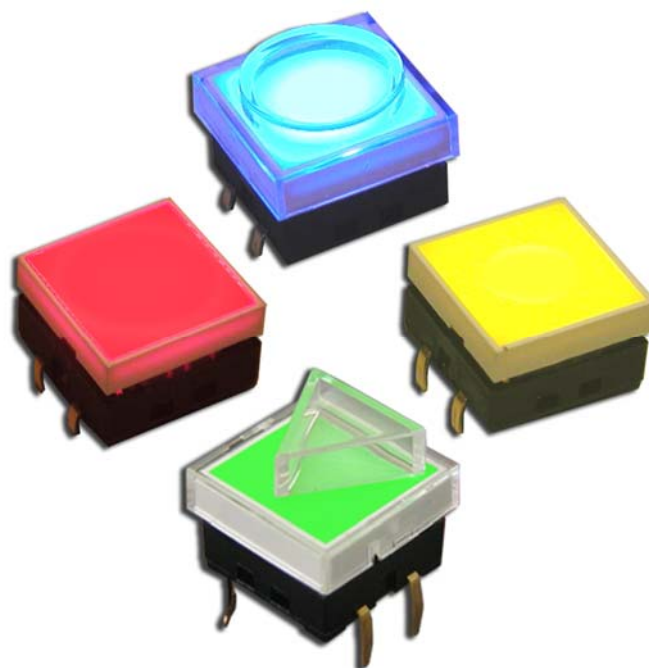
Minneapolis, Minnesota – The CIT Relay & Switch presents the JS Series 12mm square illuminated tactile switch. Offering smooth illumination with reliable logic level tactile switching, the JS Series is dramatic with any of the red, green, yellow or blue LED's available. Seven different cap options are offered, making the JS Series a truly versatile momentary switch. The JS Series offers designers one solution to two design criteria – tactile switching and illumination.

Typical applications for the JS Series switch include audio / video equipment, consumer electronics and test instruments.

Specifications: Tested electrical life is 100,000 cycles with electrical rating of 50mA @ 12VDC. Contact resistance is $<50\text{m}\Omega$ initial. The dielectric strength is 1000Vrms minimum with insulation resistance of $>100\text{M}\Omega$ minimum. Actuator force is $250 \pm 50\text{gF}$ with actuator travel of $0.3\text{mm} \pm 0.1\text{mm}$. Operating and storage temperature is -40°C to 85°C .

Materials: Actuator and lens are polycarbonate with nylon housing. Both contacts and terminals are gold over nickel plated copper alloy.

CIT Relay & Switch, a division of Circuit Interruption Technology, Inc., manufactures a broad array of automotive, telecom, security, industrial and relays and switches in thru-hole, panel and surface mount styles. CIT Relay & Switch products are supported by a worldwide network of distributors and sales representatives. For more information about the CIT Relay & Switch JS Series switches or any of the CIT switch or relay products, contact CIT Relay & Switch, 1152 Highway 10 NE, Minneapolis, MN 55432. Phone: 763-535-2339, Fax: 763-535-2194, Email: sales@citswitch.com, Website: www.citswitch.com



Division of Circuit Interruption Technology, Inc.
1152 Highway 10 NE, Minneapolis, MN 55432 USA
phone 763-535-2339 fax 763-535-2194 sales@citswitch.com www.citswitch.com