

PRODUCT SPOTLIGHT

B14HD - Open Frame Solenoid

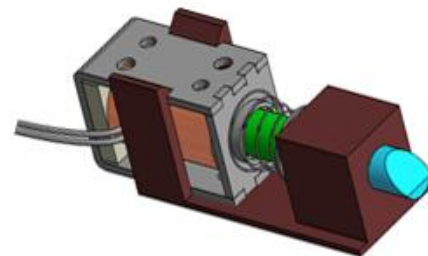
Attributes:

- Long Life to 3 Million Cycles
- Built in Plunger Stop
- Rugged Box Frame Construction
- Lead Wires or DIN Terminals
- Metric and Imperial Mounting Holes
- RoHS Compliant



Features:

- Available in Pull and Push Models
- Available as Magnetic Latching
- Multiple Configurations in a Common Frame Size
- Metric & Imperial Mounting Holes
- Various Voltage Inputs Available
- Class "B" – 130°C Coil Insulation
- Customization Available



Typical Locking Mechanism

Common Applications:

- Medical Diagnostic Devices
- Locks and Latches
- Vending Machines
- Beverage Dispensing

Configurations:

- Pull Type with Lead Wires
- Push Type with Lead Wires
- Pull Type Magnetic-Latching with Lead Wires
- Push Type Magnetic-Latching with Lead Wires

For more information, contact us [here](#) or call +1 937.454.2345.