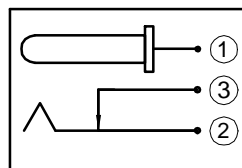
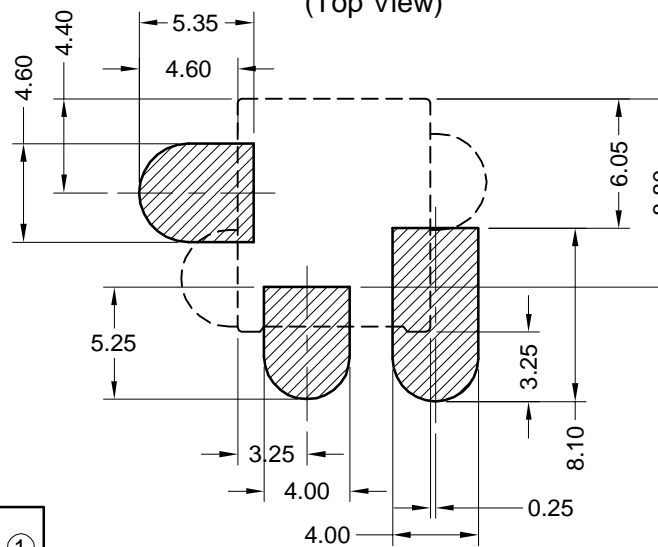
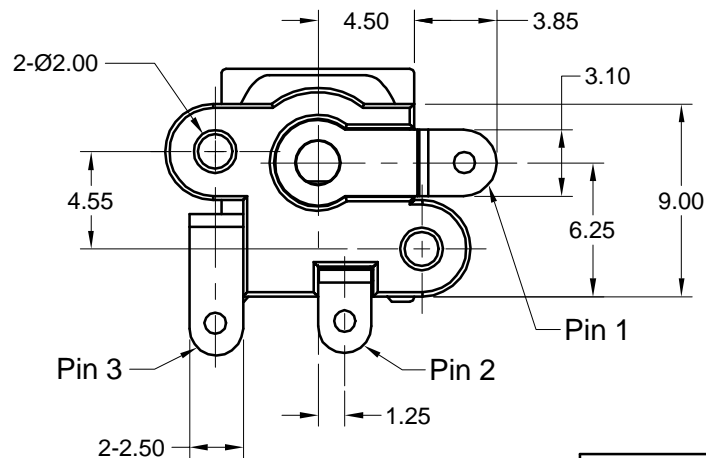


Recommended PCB Layout (Top View)



Schematic

Part Number	Center Post Diameter	Packaging
KLDV-SMT-02-B-TR	Ø2.50	Tape & Reel (TR option)

Material and Finish

Body: Ny6T Thermoplastic
UL94V-0, Color: Black

Center Pin: Copper, Nickel Plated

Contact #1: Brass, Silver Plated

Contact #2: Phosphor Bronze, Silver Plated

Contact #3: Brass, Silver Plated

Electrical Characteristics

Contact Resistance
Before Test
Between Terminals: 30 milliohms Max.
Plug to Contacts: 50 milliohms Max.

After Test:
Between Terminals: 60 milliohms Max.
Plug to Contacts: 100 milliohms Max.

Rated Voltage: 16V DC

Rated Current: 3.5 Amps

Insulation Resistance: 100 Megohms Min.
at 500V DC

Dielectric Withstanding Voltage:
500V AC for 1 minute

Mechanical Characteristics

Durability Test: 5000 cycles

Insertion Force: 0.3kg-2.0kg

Extraction Force: 0.3kg-2.0kg

Operating Temp: -25°C to +85°C

Tolerances

X.X	± 0.2
X.XX	± 0.1
Angles	± 2°

Unless Specified Otherwise

CSA NRTL/C Certified File No. LR78160

REVISION	DATE	DESCRIPTION	DRAWN BY	CHECKED BY	UNITS
B3	10/19/00	REF ECO 99-205	K. Wallace		mm
B3	11/09/00	REF ECO 00-151	REVISED BY	APPROVED BY	DATE
B4	3/13/02	REF ECO 01-213	C. Leiva		7/9/99

KLDV-SMT-02-B

Power Jack, Vertical SMT

Ø2.5mm Center Pin

