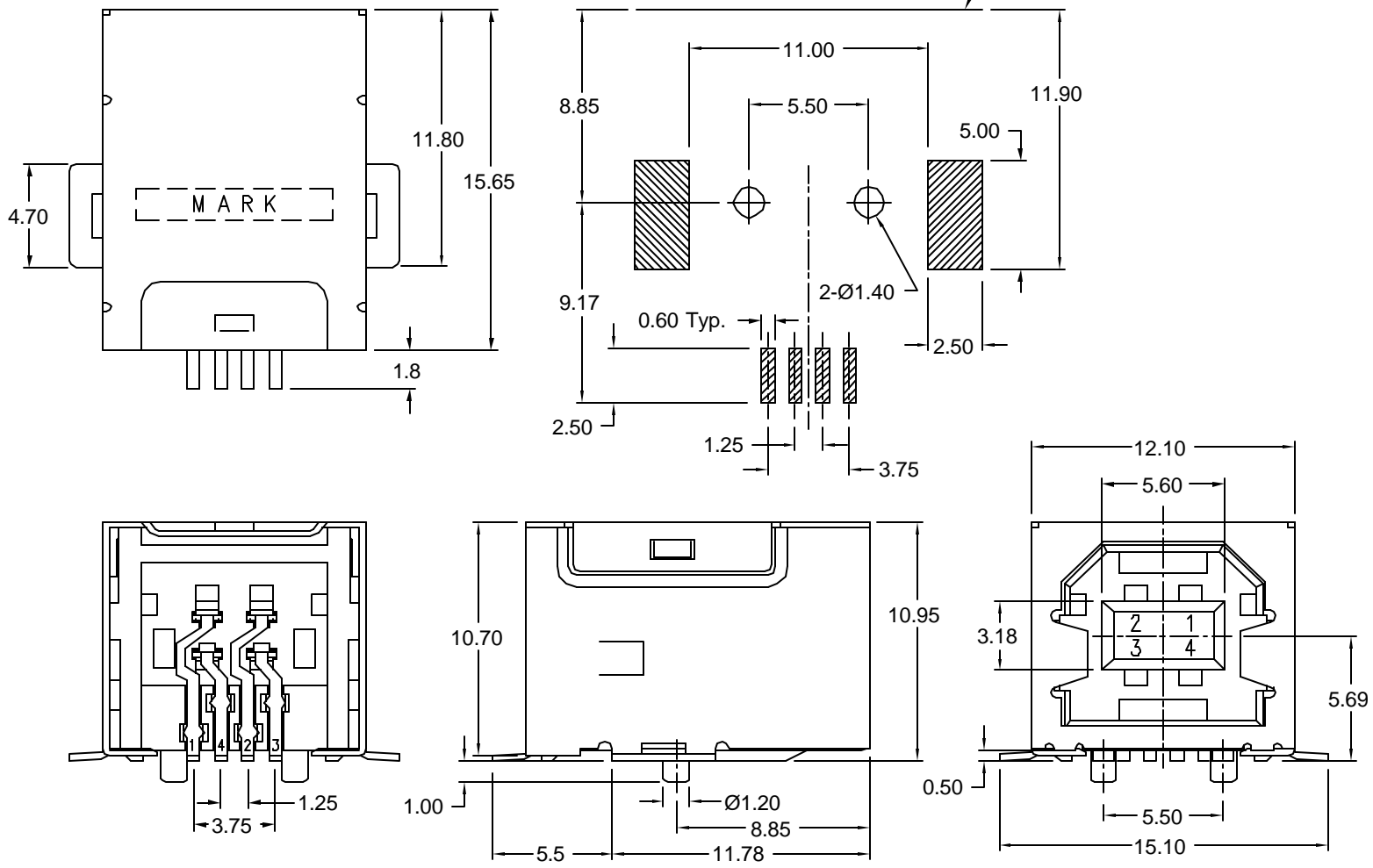


Recommended PCB Layout

(component side)



Material and Finish

Shield: copper alloy,
100-200u" nickel plated
over 100u" copper

Insulator: UL94V-0 rated
high temp. nylon,
reflow process compatible,
Color* - white or black

Recommended Reflow Temperature:
230°C for 30 seconds
260°C maximum

Contact Material:
phosphor bronze

Contact Plating Options:
Standard: gold flash on
contact area, 120u" tin/lead
on solder tails, all over
50u" nickel underplate
30 Option: 30u" gold on
contact area, 120u" tin/lead
on solder tails, all over
50u" nickel underplate

Specifications

Rated Voltage:
30V AC (rms)

Contact Current Rating:
1A max.

Contact Resistance:
30 milliohms max.

Insulation Resistance:
1000 Megohms min.

Dielectric Withstanding:
500V AC

Insertion Force:
3.57kg max.

Extraction Force:
1.02kg min.

Operating Temperature:
-25°C to 80°C

| Part Number | Contact Area Plating Finish | *Insulator Color | Packaging |
|-------------------|-----------------------------|------------------|---------------------------|
| KUSB-SMT-BS1N-W | Gold Flash (standard) | White | Bulk (trays, standard) |
| KUSB-SMT-BS1N-W30 | 30u" Gold (30 option) | White | Bulk (trays, standard) |
| KUSB-SMT-BS1N-B | Gold Flash (standard) | Black | Bulk (trays, standard) |
| KUSB-SMT-BS1N-B30 | 30u" Gold (30 option) | Black | Bulk (trays, standard) |
| KUSB-SMTBS1NWTR | Gold Flash (standard) | White | Tape-and-Reel (TR option) |
| KUSB-SMTBS1NW30TR | 30u" Gold (30 option) | White | Tape-and-Reel (TR option) |
| KUSB-SMTBS1NBTR | Gold Flash (standard) | Black | Tape-and-Reel (TR option) |
| KUSB-SMTBS1NB30TR | 30u" Gold (30 option) | Black | Tape-and-Reel (TR option) |

| Tolerances |
|---------------|
| X.X ± 0.35 |
| X.XX ± 0.25 |
| Unless Stated |
| Otherwise |



| REVISION | DATE | DESCRIPTION | DRAWN BY | CHECKED BY | UNITS |
|----------|----------|----------------|------------|------------|---------|
| C3 | 11/28/01 | Ref ECO 01-221 | K. Wallace | C. Leiva | mm |
| C4 | 3/3/03 | Ref ECO 03-007 | REVISED BY | CHECK DATE | DATE |
| C5 | 6/25/04 | ECO#04-029 | H. MA | 6/25/04 | 7/12/99 |

KUSB-SMT-BS1N-x

Right Angle USB B-type Receptacle
SMT Type, 4 Position

