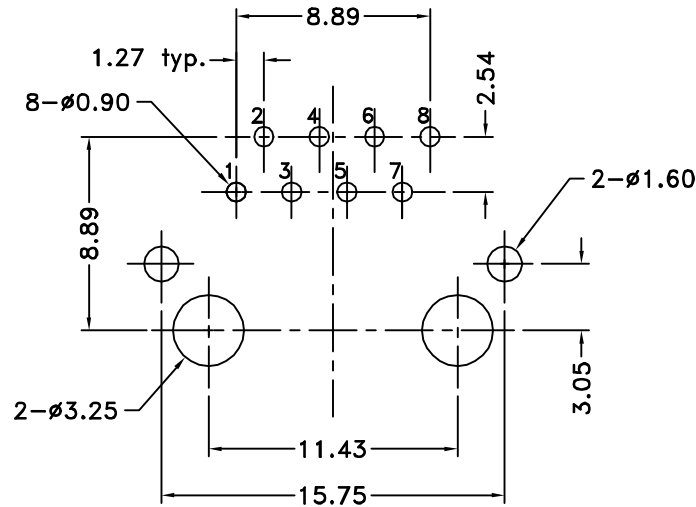
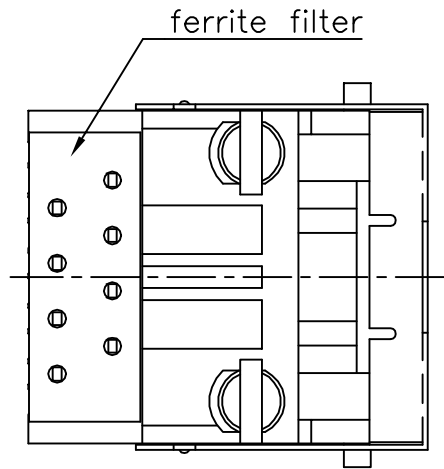


PCB LAYOUT/TOP VIEW



Materials and Finish

- Housing Material-
PBT Thermoplastic
UL 94V-0 Rated
Color: Black
- Shield Material-
Copper Alloy- Tin or Nickel Plated
- Contact Material-
Phosphor Bronze
- Contact Plating-
50 Option: 0.0001" Nickel Plating,
Selective Plating 0.000050"
Gold on Contact Area to
Comply with FCC Requirements
Under No. 47 C.F.R. Part 68,
Subpart F

Electrical Characteristics

- Insulation Resistance-
500 Megohms Min.
- Dielectric Withstanding Voltage-
1000V rms, 60Hz
- Contact Resistance-
20 milliohms Max.
- Current Rating-
1.5 Amps

Ferrite Specifications	
Test Frequency	Impedance
1 Mhz	1 ohm
10 Mhz	7 ohms
30 Mhz	13 ohms
50 Mhz	16 ohms
100 Mhz	21 ohms

Part Number	Contact Plating Finish
GDLF-S3-88-50	50u" Gold

CSA NRTL/C Certified File No. LR78160

REVISION	DATE	DESCRIPTION	DRAWN BY	DESIGNED BY	UNITS
A02	11/15/00	remove 15u" gold option revise PCB layout	C. Leiva		mm
A03	1/15/01	reverse & correct boardlock orientation on bottom view, change shield plating to tin or nickel	CHECKED BY	APPROVED BY	DATE
A1	8/27/01	Ref ECD 01-150			11/6/00

GDLF-S3-88-50

Shielded Mod. Jack, 8 position/8 contacts
Flat Grounding Flaps, Ferrite Filter, Extended Shield

