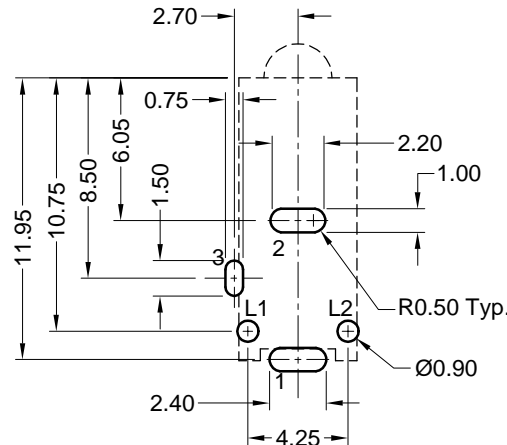
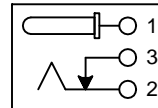


Recommended PCB Layout (top view)



Part Number	LED Color (L2/L1)
KLDL-0201BC-G/Y	Green/Yellow

Power Jack Schematic



### Material and Finish

Body: Nylon 66, UL 94V-0 Rated  
 Black Color  
 Center Pin: Brass, Tin Plated  
 Pins 1 and 3: Brass, Tin Plated  
 Pin 2: PBS, Tin Plated  
 Insulator Material Color: Black

### Electrical Characteristics

Contact Resistance  
 Before Durability Test  
 Between Terminals: 30 milliohms Max.  
 Plug to Contacts: 50 milliohms Max.

After Durability Test:  
 Between Terminals: 60 milliohms Max.  
 Plug to Contacts: 100 milliohms Max.

Rated Voltage: 24V DC

Rated Current: 2.5 amps

Insulation Resistance: 100 Megohms Min.  
 at 500 VDC

### Mechanical Characteristics

Durability Test: 500 cycles

Insertion Force: 0.3kg-2.0kg

Extraction Force: 0.3kg-2.0kg

Operating Temp: -25°C to +85°C

**PATENT PENDING**

Tolerances
X.X ± 0.25
X.XX ± 0.15
Unless Stated Otherwise



REV.	DATE	DESCRIPTION	REV. BY	CHK. BY	DRAWN BY	DATE
A0	3/22/02	New Drawing	K. Wallace	K. Wallace	K. Wallace	3/22/02
A1	5/10/02	Release Drawing	K. Wallace	K. Wallace	K. Wallace	
A2	5/16/02	Add Schematic	K. Wallace	K. Wallace	K. Wallace	
A3	5/29/02	Release Drawing	K. Wallace	K. Wallace	K. Wallace	
B1	7/31/02	Ref. ECO 02-091	K. Wallace	K. Wallace	K. Wallace	
B2	7/24/03	Ref. ECO 03-017	C. Leiva	T. Gokcek	K. Wallace	

**KLDL-0201BC-x/x**

Mini DC Power Jack with LED

1.3mm Center Pin, Bi-color LED

