

## ASM01W0164

SMT solderable spring contact, mounting on component or on soldering side for direct insertion of components with pins or with contacts.

### Technical Data

0.1 - 0.75 mm<sup>2</sup> 750 V / 4 kV / 13 A

Insulation co-ordination according to EN 60664-1

Protection category according to IEC 529

IP00

Min. insul. strip length 8 mm

Recommended pc board hole dia. Ø 2 mm

## ASM01Y0164

SMT solderable spring contact, mounting on component or on soldering side for direct insertion of components with pins or with contacts.

### Technical Data

0.75 - 2.5 mm<sup>2</sup> 750 V / 4 kV / 13 A

Insulation co-ordination according to EN 60664-1

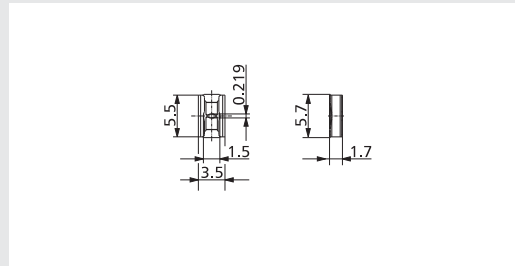
Protection category according to IEC 529

IP00

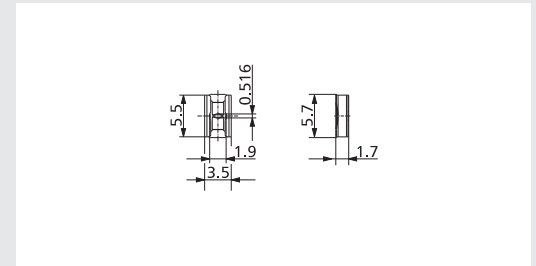
Min. insul. strip length 8 mm

Recommended pc board hole dia. Ø 2 mm

Dimensions in mm 1 mm = 0.0394 in.



Dimensions in mm 1 mm = 0.0394 in.



### Part numbers (P/N) (information: page 16)

<b>ASM01W0164</b>	
P/N ASM01W0164-0G16	15" Reel Mounting soldering side
P/N ASM01W0164-1G16	15" Reel Mounting component side
P/N ASM01W0164-2G16	7" Reel Mounting soldering side
P/N ASM01W0164-3G16	7" Reel Mounting component side
P/N ASM01W0164-4G16	13" Reel Mounting soldering side
P/N ASM01W0164-5G16	13" Reel Mounting component side

\* approval pending

### Part numbers (P/N) (information: page 16)

<b>ASM01Y0164</b>	
P/N ASM01Y0164-0G16	15" Reel Mounting soldering side
P/N ASM01Y0164-1G16	15" Reel Mounting component side
P/N ASM01Y0164-2G16	7" Reel Mounting soldering side
P/N ASM01Y0164-3G16	7" Reel Mounting component side
P/N ASM01Y0164-4G16	13" Reel Mounting soldering side
P/N ASM01Y0164-5G16	13" Reel Mounting component side

\* approval pending

- Standard pole sizes
- Available on demand. Minimum order quantity 5000 pieces per item.

- Standard pole sizes
- Available on demand. Minimum order quantity 5000 pieces per item.