

607



»» Features

- High rating up to 10A for double pole version.
- AC & DC coil are both available.
- Optional for module with diode, LED and RC.
- With position indicator and manual override.
- Complies with RoHS-Directive 2011/65/EU.

»» Type List

Terminal style	Contact form	Designation (provided with)	Designation (provided with)
			Dust cover with test button
Quick terminal	2C (DPDT)	-----	607-2CC-DM
		LED	607-2CC-DM-1
		Diode	607-2CC-DM-2
		Diode & LED	607-2CC-DM-4
		RC	607-2CC-DM-6
		RC & LED	607-2CC-DM-7

»» Ordering Information

607 - 2C C - DM -
 1 2 3 4 5 6

- | | |
|---|--|
| <p>1. 607 -- Basic series designation</p> <p>2. 2C -- Double pole double throw</p> <p>3. C ⁽¹⁾ -- Contact material AgNi</p> <p>4. DM -- Dust cover with test button</p> <p>5. Blank -- Standard type</p> <p>1 -- Provided with LED</p> <p>2 -- Provided with diode, the diode anode on # 1 terminal (for DC coil)</p> <p>3 -- Provided with diode, the diode cathode on # 1 terminal (for DC coil)</p> | <p>4 -- Provided with diode & LED, the diode anode on # 1 terminal (for DC coil)</p> <p>5 -- Provided with diode & LED, the diode cathode on # 1 terminal (for DC coil)</p> <p>6 -- Provided with RC (for AC coil)</p> <p>7 -- Provided with RC & LED (for AC coil)</p> <p>6. <input type="checkbox"/> -- Coil voltage (please refer to the coil rating data for the availability)</p> |
|---|--|

Note : (1) Gold plated or AgSnO alloy contact material are available, for the details please contact Song Chuan.

»» Contact Rating

Rated load	Resistive load	Inductive load (cosØ=0.3 L/R=7ms)
		10A 250VAC, 10A 30VDC
Max. switching current	12A	
Max. switching voltage	277VAC	
Max. switching capacity	3000VA	
Min. switching current ⁽¹⁾	5VDC 10mA (for reference value)	

Note : (1) Failure rate level P.

»»» Coil Rating (DC)

Rated voltage (V)	Rated current $\pm 10\%$ at 23°C (mA)	Coil resistance $\pm 10\%$ at 23°C (Ω)	Max. continuous voltage at 70°C	Pick up voltage(Max.) at 23°C	Drop out voltage(Min.) at 23°C	Power consumption at rated voltage
5	106	47	110 % of rated voltage	75 % of rated voltage	10 % of rated voltage	approx. 0.53W
6	88	68				
12	44	272				
24	22	1,087				
36	14.7	2,445				
48	11	4,347				
100/110	4.8	22,830				
125	4.2	29,481				

»»» Coil Rating (AC)

Rated voltage (V)	Rated current $\pm 10\%$ at 23°C (mA)		Coil resistance $\pm 10\%$ at 23°C (Ω)	Max. continuous voltage at 70°C	Pick up voltage(Max.) at 23°C	Drop out voltage(Min.) at 23°C	Power consumption at rated voltage
	50Hz	60Hz					
12	88	75	65	110 % of rated voltage	80 % of rated voltage	30 % of rated voltage	approx. 0.9VA (60Hz)
24	44	37.5	251				
48	22	18.8	1,025				
100/110	9.6	8.2	5,050				
120	8.8	7.5	6,970				
200/220	4.8	4.1	21,200				
230	4.6	3.9	26,120				
240	4.4	3.8	27,760				

»»» Specification

Contact material	AgNi alloy	
Contact resistance ⁽¹⁾	100m Ω Max. (at 1A/6VDC by 4-wire resistance measurement)	
Operate time ⁽¹⁾	15ms Max.	
Release time ⁽¹⁾	10ms Max. (with diode or R.C : 20ms Max.)	
Insulation resistance ⁽¹⁾	1000M Ω Min. (DC 500V)	
Dielectric strength ⁽¹⁾	Between open contact	: AC 1000V, 50/60Hz 1 min.
	Between contact and coil	: AC 5000V, 50/60Hz 1 min.
	Between contact circuits	: AC 3000V, 50/60Hz 1 min.
Vibration resistance	Operating extremes	10~55Hz , amplitude 1.5 mm
	Damage limits	10~55Hz , amplitude 1.5 mm
Shock resistance	Operating extremes	NO : 20G, NC : 10G
	Damage limits	100G
Life expectancy	Mechanical	DC coil: 20,000,000 operations (frequency 18,000 operations /hr)
		AC coil: 10,000,000 operations (frequency 18,000 operations /hr)
	Electrical	100,000 operations (frequency 900 operations /hr)
Operating ambient temperature	-40~+70°C (no freezing) ⁽²⁾	
Weight	Approx. 21g	

Note : (1) Initial value. Operate and release time excluding contact bounce.

(2) Ambient temperature of -40~+85°C is also available, for the details please contact Song Chuan.

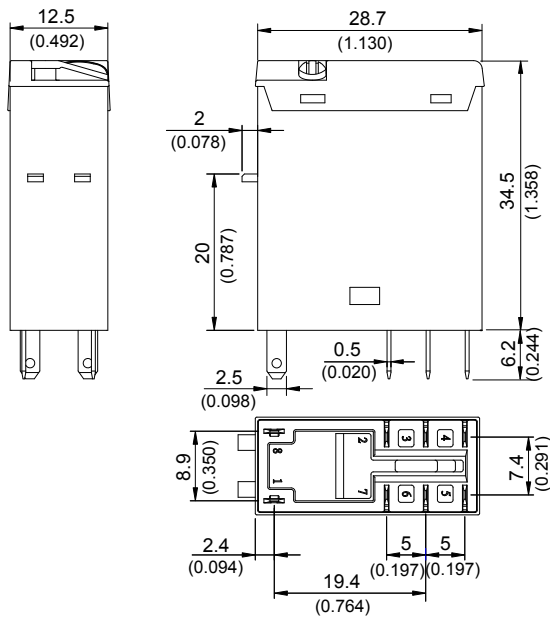
»» Safety Approval

Certified	UL / CUL
File No.	E88991

»» Safety Approval Rating

UL / CUL
12A/277VAC
12A/30VDC
B300
R300

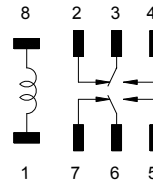
»» Outline Dimensions



TOLERANCE:
 LESS THAN: 1(0.039) ±0.1(0.004)
 5(0.197) ±0.3(0.012)
 20(0.787) ±0.5(0.020)
 MORE THAN: 20(0.787) ±1(0.039)

»» Wiring Diagram

BOTTOM VIEW



»» Engineering Data

